



# JAPAN AUTOMOBILE FEDERATION

F. I. A. Recognition No. 1539  
Group 2 - Touring

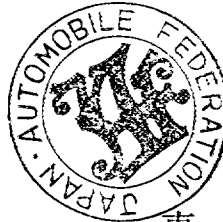
## FEDERATION INTERNATIONALE DE L'AUTOMOBILE

Form of recognition in accordance with  
Appendix J to the International Sporting Code.

Manufacturer	NISSAN MOTOR CO., LTD.	Cylinder-capacity	1,483	cm <sup>3</sup>	90.50	cu. in.
Serial No. of chassis	G10 000001	Model	C(L)10			
Serial No. of engine	G15 100101	Manufacturer	NISSAN			
Recognition is valid from	<u>1st November 1968</u>	Manufacturer	NISSAN	List	<u>1968/10</u>	

The manufacturing of the model described in this recognition form was started on MAY 1968 and the minimum production of 1,000 identical cars, in accordance with the specifications of this form was reached on JUNE 1968

Photograph A, 3/4 view of car from front



東京都港区芝公園第三号地一番五  
機械振興会館内  
法人 日本自動車連盟

The vehicle described in this form has been subject to the following amendments :

Variants				Normal evolution of the type			
on	19	rec. No.	List	on	19	rec. No.	List
on	19	rec. No.	List	on	19	rec. No.	List
on	19	rec. No.	List	on	19	rec. No.	List
on	19	rec. No.	List	on	19	rec. No.	List
on	19	rec. No.	List	on	19	rec. No.	List

Stamp and signature of the  
National Sporting Authority

Stamp and signature of the F. I. A.

Make

NISSAN

Model

C(L)10

F. I. A. Rec. No.

IMPORTANT - the underlined items must be stated in two measuring systems, one of which must be the metric system. See conversion table hereafter.

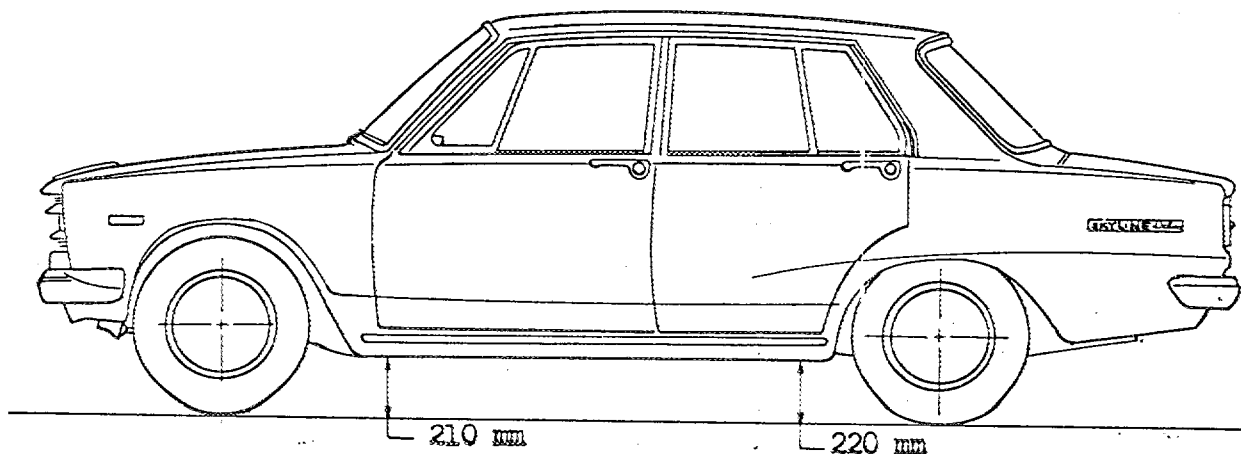
### CAPACITIES AND DIMENSIONS

1. <u>Wheelbase</u>	2,490	mm	98.03	inches
2. <u>Front track</u>	1,325	mm	52.17	inches *
3. <u>Rear track</u>	1,320	mm	51.97	inches *
4. Overall length of the car		423.5	cm	inches
5. Overall width of the car		159.5	cm	inches
6. Overall height of the car		140.5	cm	inches
7. <u>Capacity of fuel tank</u> (reserve included)			50	ltrs
	13.21	Gallon US		Gallon Imp.
8. Seating capacity	5			
9. <u>Weight</u> , total weight of the car with normal equipment, water, oil and spare wheel but without fuel nor repair tools:				
	915	kg	2,017	lbs
				cwt

\* Differences in track caused by the use of other wheels with different rim widths must be stated when recognition is requested for the wheels concerned.

Specify ground clearance in relation to the track and give drawing of two fixed points of the vehicle's structure at which measurements are taken.

These ground clearance dimensions are only for information when checking the track and can in no way affect the eligibility of the car.



### CONVERSION TABLE

1 inch / pouce	--	2.54 cm	1 quart US	--	0.9464 ltrs
1 foot / pied	--	30.4794 cm	1 pint (pt)	--	0.568 ltrs
1 square inch / pouce carré	--	6.452 cm <sup>2</sup>	1 gallon Imp.	--	4.546 ltrs
1 cubic inch / pouce cube	--	16.387 cm <sup>3</sup>	1 gallon US	--	3.785 ltrs
1 pound / livre (lb)	--	453.593 gr.	1 hundred weight (cwt)	--	50.002 kg

Make

NISSAN

Model

C(L)10

F. I. A. Rec. No.

**CHASSIS AND COACHWORK** (Photographs A, B and C)

20. Chassis/body construction : ~~XXXXXX~~ / unitary construction
21. Unitary construction, material (s) **Steel**  
Separate construction
22. Separate Constructions: Material (s) of chassis
23. Material (s) of coachwork
24. Number of doors 4 Material (s) **Steel**
25. Material (s) of bonnet **Steel**
26. Material (s) of boot lid **Steel**
27. Material (s) of rear-window **Glass**
28. Material (s) of windscreen **Glass**
29. Material (s) of front-door windows **Glass**
30. Material (s) of rear-door windows **Glass**
31. Sliding system of door windows **Vertical, manual**
32. Material (s) of rear-quarter light **Glass**

**ACCESSORIES AND UPHOLSTERY**

38. Interior heating : ~~XXXX~~ - no
39. Air-conditioning : ~~XXXX~~ - no
40. Ventilation : yes - ~~XXX~~
41. Front seats, type of seats and upholstery **Separate, vinyl**
42. Weight of front seat (s), complete with supports and rails, out of the car :  
12 x 2 kg lbs
43. Rear seats, type of seats and upholstery **Bench vinyl**
44. Front bumper, material (s) **Steel** Weight **5.3** kg lbs
45. Rear bumper, material (s) **Steel** Weight **5.3** kg lbs

**WHEELS**

50. Type **Pressed steel**
51. Weight (per wheel, without tyre) **6.7** kg lbs
52. Method of attachment **Wheel nut (4 nuts)**
53. Rim diameter **354.8** mm **14.0** inches
54. Rim width **114** mm **4.50** inches

**STEERING**

60. Type **Recirculating ball**
61. Servo-assistance : ~~XXXX~~ - no
62. Number of turns of steering wheel from lock to lock **3.3**
63. in case of servo-assistance

Make **NISSAN**

Model **C(L)10**

F. I. A. Rec. No.

**SUSPENSION**

70. Front suspension (photogr. D), type **Independent, MacPherson**  
 71. Type of spring **Coil**  
 72. Stabiliser (if fitted) **Torsion bar**  
 73. Number of shockabsorbers **2**  
 74. Type **Hydraulic, telescopic**  
 78. Rear suspension (photogr. E), type **Rigid axle**  
 79. Type of spring **Leaf**  
 80. Stabiliser (if fitted)  
 81. Number of shockabsorbers **2**  
 82. Type **Hydraulic, telescopic**

**BRAKES (photographs F and G)**

90. System **Hydraulic**  
 91. Servo-assistance (if fitted), type  
 92. Number of hydraulic master cylinders **1 Tandem**

	FRONT		REAR	
93. Number of cylinders per wheel	<b>1</b>		<b>1</b>	
94. Bore of wheel cylinder (s)	<b>48.1</b>	mm	<b>20.64</b>	mm
			in.	in.
<b>Drum brakes</b>				
95. Inside diameter		mm	<b>228.6</b>	mm
			in.	in.
96. Length of brake linings		mm	<b>219.5</b>	mm
			in.	in.
97. Width of brake linings		mm	<b>40</b>	mm
			in.	in.
98. Number of shoes per brake			<b>2</b>	
99. Total area per brake		mm <sup>2</sup>	<b>17,560</b>	mm <sup>2</sup>
			sq. in.	sq. in.
<b>Disc brakes</b>				
100. Outside diameter	<b>265</b>	mm		mm
			in.	in.
101. Thickness of disc	<b>10</b>	mm		mm
			in.	in.
102. Length of brake linings	<b>63.4</b>	mm		mm
			in.	in.
103. Width of brake linings	<b>41.6</b>	mm		mm
			in.	in.
104. Number of pads per brake	<b>2</b>			
105. Total area per brake	<b>5,000</b>	mm <sup>2</sup>		mm <sup>2</sup>
			sq. in.	sq. in.

Make NISSAN

Model C(1)10

F. I. A. Rec. No.

ENGINE (photographs J and K)

- 130. Cycle 4
- 131. Number of cylinders 4
- 132. Cylinder arrangement In line
- 133. Bore 82 mm 3.23 in.
- 134. Stroke 70.2 mm 2.76 in.
- 135. Capacity per cylinder 371 cm<sup>3</sup> 22.62 cu. in.
- 136. Total cylinder-capacity 1,483 cm<sup>3</sup> 90.50 cu. in.
- 137. Material (s) of cylinder block Cast iron
- 138. Material (s) of sleeves (if fitted)
- 139. Cylinder-head, material (s) Al-alloy Number fitted 1
- 140. Number of inlet ports 4
- 141. Number of exhaust ports 4
- 142. Compression ratio 8.5
- 143. Volume of one combustion chamber 55.5 cm<sup>3</sup> cu. in.
- 144. Piston, material Al-alloy
- 145. Number of rings 3
- 146. Distance from gudgeon pin centre line to highest point of piston crown 42 mm inches
- 147. Crankshaft : ~~XXXXXXXX~~ / stamped
- 148. Type of crankshaft : integral / ~~XXXXXXXX~~
- 149. Number of crankshaft main bearings 5
- 150. Material of bearing cap Cast iron
- 151. System of lubrication : ~~XXXXXXXX~~ / oil in sump
- 152. Capacity, lubricant 3.7 ltrs pts quarts US
- 153. Oil cooler : ~~XXXX~~ / no
- 154. Method of engine cooling Water
- 155. Capacity of cooling system 6.8 ltrs pints quarts US
- 156. Cooling fan (if fitted), dia. 34 cm inches
- 157. Number of blades of cooling fan 2

Bearings

- 158. Crankshaft main, type Plain Dia. 56 mm in.
- 159. Connecting rod big end, Plain Dia. 50 mm in.

Weights

- 160. Flywheel (clean) 9 kg lbs
- 161. Flywheel with clutch (all turning parts) 11 kg lbs
- 162. Crankshaft 14 kg lbs
- 163. Connecting rod 0.6 kg lbs
- 164. Piston with rings and pin 0.5 kg lbs

Make NISSAN

Model C(L)10

F. I. A. Rec. No.

FOUR STROKE ENGINES

170. Number of camshafts 1 171. Location Cylinder head  
 172. Type of camshaft drive Chain  
 173. Type of valve operation Rocker arm

INLET (see page 8) \*

180. Material(s) of inlet manifold Al-alloy  
 181. Diameter of valves 39 mm 1.54 inches  
 182. Max. valve lift 9 mm 0.35 in. 183. Number of valve springs 2  
 184. Type of spring Coil 185. Number of valves per cylinder 1  
 186. Tappet clearance for checking timing (cold) 0.2 mm inches  
 187. Valves open at (with tolerance for tappet clearance indicated) H.T.D.C. 15° ± 7°  
 188. Valves close at (with tolerance for tappet clearance indicated) A.B.D.C. 55° ± 7°  
 189. Air filter, type Dry

EXHAUST (see page 8)

195. Material (s) of exhaust manifold Cast iron  
 196. Diameter of valves 34 mm 1.34 inches  
 197. Max. valve lift 9 mm 0.35 in. 198. Number of valve springs 2  
 199. Type of spring Coil 200. Number of valves per cylinder 1  
 201. Tappet clearance for checking timing (cold) 0.2 mm inches  
 202. Valves open at (with tolerance for tappet clearance indicated) B.B.D.C. 55° ± 7°  
 203. Valves close at (with tolerance for tappet clearance indicated) A.T.D.C. 15° ± 7°

CARBURETION (photograph N)

210. Number of carburetors fitted 1 211. Type Down draft  
 212. Make NIHON KIKAKI 213. Model 213282  
 214. Number of mixture passages per carburetor 2  
 215. Flange hole diameter of exit port(s) of carburetor 28 & 32 mm in.  
 216. Minimum dimensions of mixture passage(s) ~~xxxxxxxxxxxxxxxxxxxxxxxxxxxxxxxx~~  
 21 & 27 mm inches

INJECTION (if fitted)

220. Make of pump 221. Number of plungers  
 222. Model or type of pump 223. Total number of injectors  
 224. Location of injectors  
 225. Minimum diameter of inlet pipe mm inches

\*) for additional information concerning two-stroke engines and super-charged engines see page 13.

Make

NISSAN

Model

C(L)10

F. I. A. Rec. No.

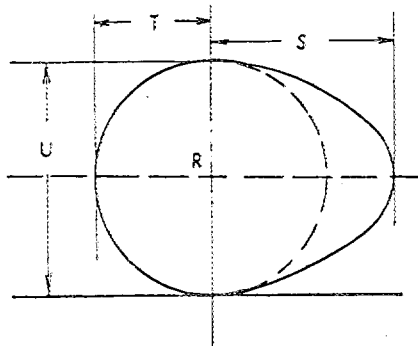
ENGINE ACCESSORIES

- 230. Fuel pump : ~~mechanical~~ / or electric 231. No. fitted 1
- 232. Type of ignition system **Make and break ignition** 233. No. of distributors 1
- 234. No. of ignition coils 1 235. No. of spark plugs per cylinder 1
- 236. Generator, type: ~~brush~~ alternator-number fitted 1 237. Method of drive V-belt
- 238. Voltage of generator 12 volts 239. Battery, number 1
- 240. Location Engine room
- 241. Voltage of battery 12 volts

ENGINE AND CAR PERFORMANCES (as declared by manufacturer in catalogue)

- 250. Max. engine output 88PS (type of horsepower: JIS ) at 6,000 rpm
- 251. Maximum rpm 6,600 output at that figure 85PS
- 252. Maximum torque 12.2 kg-m at 4,000 rpm
- 253. Maximum speed of the car 160 km/hour miles / hour

255.



R=centre of camshaft.

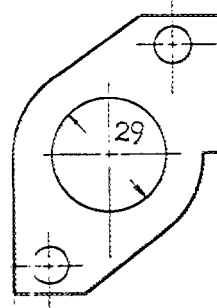
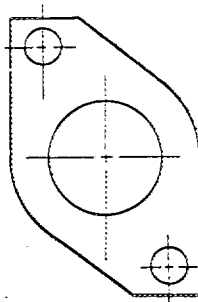
Inlet cam

S =	21.8	mm	0.858	inches
T =	14.7	mm	0.579	inches
U =	29.5	mm	1.161	inches

Exhaust cam

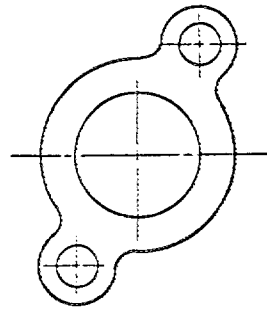
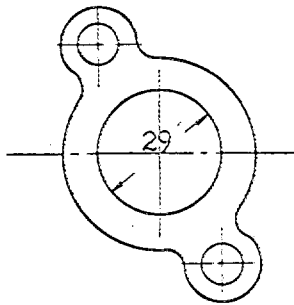
S =	21.8	mm	0.858	inches
T =	14.7	mm	0.579	inches
U =	29.5	mm	1.161	inches

Drawing inlet manifold ports, side of cylinder-head. Indicate scale or dimensions and manufacturing tolerance.

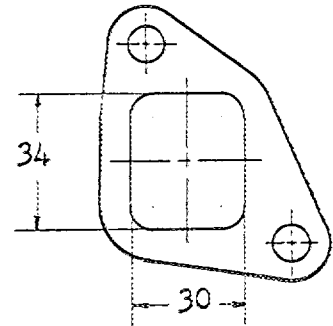
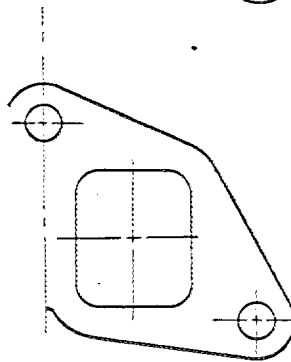


Unit: mm  
Tolerance: ±1.5

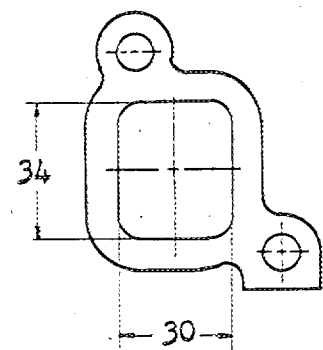
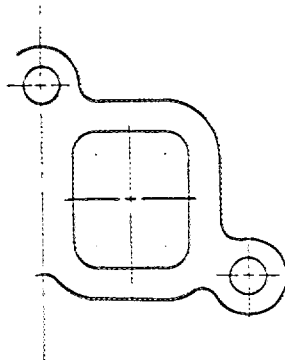
Drawing of entrance to inlet part of cylinder-head. Indicate scale or dimensions and manufacturing tolerance.



Drawing exhaust manifold ports, side of cylinder-head. Indicate scale or dimensions and manufacturing tolerance.



Drawing of exit to exhaust port of cylinderhead. Indicate scale or dimensions and manufacturing tolerance.





Make **NISSAN**

Model **C(L)10**

F. I. A. Rec. No.

**DRIVE TRAIN**

**CLUTCH**

- 260. Type of clutch **Dry**
- 261. No. of plates **1**
- 262. Dia. of clutch plates **20** cm inches
- 263. Dia. of linings, inside **13** cm in. outside **20** cm in.
- 264. Method of operating clutch **Hydraulic**

**GEAR BOX** (photograph H)

- 270. Manual type, make **NISSAN** Method of operation **Mechanical**
- 271. No. of gear-box ratios forward **3 & 4** 272. Synchronized forward ratios **1,2,3 & 1,2,3,4**
- 273. Location of gear-shift **Steering column (3 speed) & floor (4, speed)**
- 274. Automatic, make **BORG WARNER** type
- 275. No. of forward ratios **3** 276. Location of gear-shift **Steering column**

277.	Manual		Automatic		Alternative manual/ <del>automatic</del>		Ratio	No.	teeth
	Ratio	No. teeth	Ratio	No. teeth	Ratio	No. teeth			
1	3.657	$\frac{32}{21} \times \frac{35}{15}$	2.393	$\frac{67}{17} \times \frac{17}{16} \times \frac{16}{28}$	3.263	$\frac{30}{19} \times \frac{31}{15}$			
2	2.177	$\frac{32}{21} \times \frac{30}{21}$	1.450	$(\frac{32}{17} \times \frac{17}{16} \times \frac{16}{28} + 1) \times (\frac{67}{32+67})$	1.645	$\frac{30}{19} \times \frac{25}{24}$			
3	1.419	$\frac{32}{21} \times \frac{27}{29}$	1.000		1.000				
4	1.000								
5									
6									
reverse	3.638	$\frac{32}{21} \times \frac{18}{21} \times \frac{39}{14}$	2.094	$\frac{67}{17} \times \frac{17}{32}$	3.355	$\frac{30}{19} \times \frac{16}{16} \times \frac{34}{16}$			

- 278. Overdrive, type
- 279. Forward gears on which overdrive can be selected
- 280. Overdrive ratio

**FINAL DRIVE**

- 290. Type of final drive **Hypoid**
- 291. Type of differential **Bevel gear**
- 292. Type of limited slip differential (if fitted)
- 293. Final drive ratio **3.889** **4.111** **4.375**
- Number of teeth **35/9** **37/9** **35/8**

Make

NISSAN

Model

C(L)10

F. I. A. Rec. No.

IMPORTANT- The conformity of the car with the following items of the present recognition form is to be disregarded during the scrutineering, when the vehicle has been entered in group 2 (Touring cars) or 3 (Grand Touring cars) : 41, 72, 80, 91, 142, 143, 144, 145, 146, 153, 156, 157, 160, 161, 162, 163, 164, 182, 184, 186, 187, 188, 189, 199, 201, 202, 203, 212, 213, 215, 216, 222, 225, 230, 250, 251, 252, 253, and photographs I, M, N, and page 8

During the scrutineering of cars entered in group 4 (Sportscars) only the following items of the present recognition form are to be taken into consideration : 1, 2, 3, 9, 20, 21, 22, 23, 24, 25, 26, 70, 71, 78, 79, 90, 130, 131, 132, 133, 134, 135, 136, 137, 138, 139, 140, 141, 147, 148, 149, 150, 158, 159, 170, 171, 172, 173, 185, 200, 270, 271, 274, 275, 290, 291, 292 and photographs A, B, D, E, F, G, H, J, K, and O.

---

Optional equipment affecting preceding information. This to be stated together with reference number.

Make

NISSAN

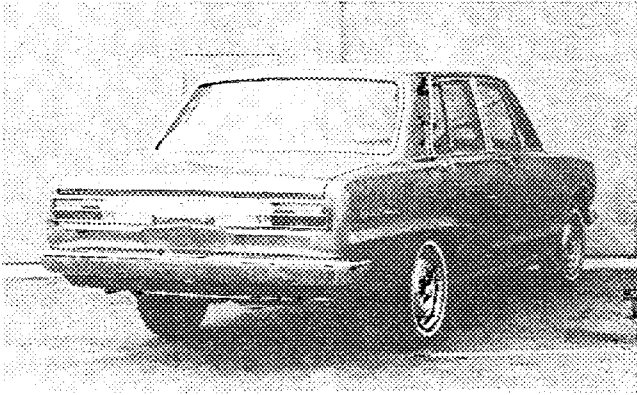
Model

C(L)10

F. I. A. Rec. No.

Photograph

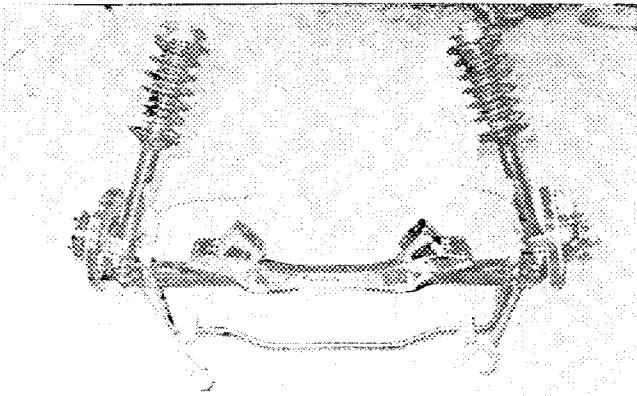
B, 3/4 view of car from rear



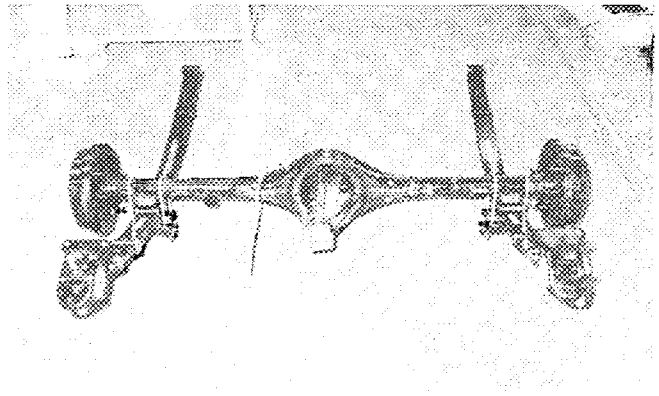
C, interior view of car through driver's door (open or removed) with dashboard



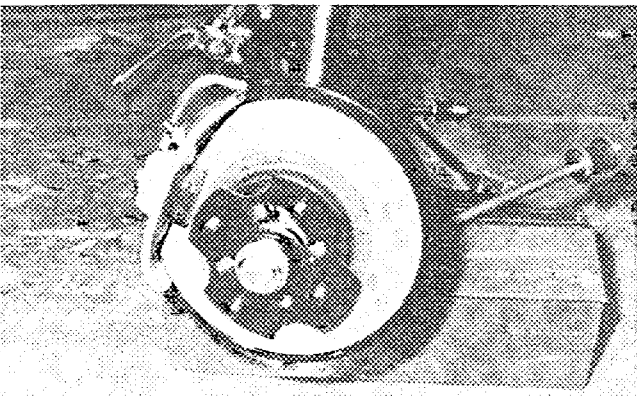
D, front axle complete, removed from car. Without wheels.



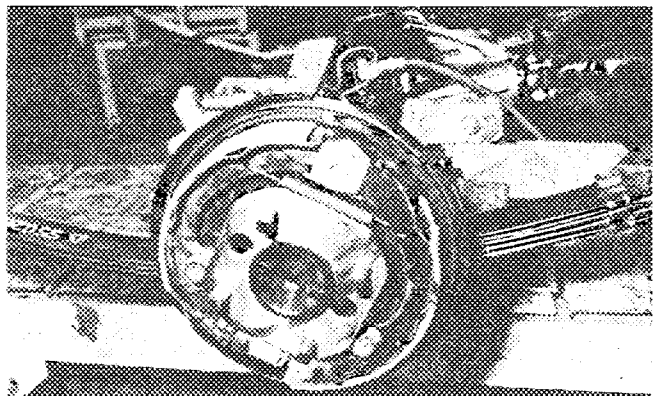
E, Rear axle complete without wheels, removed from car.



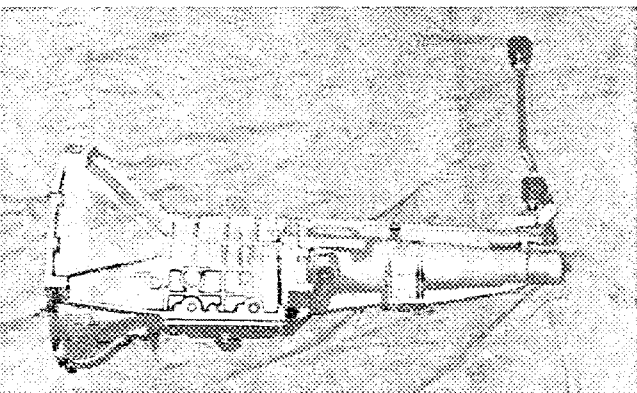
F, front brake, drum removed or disc with caliper(s)



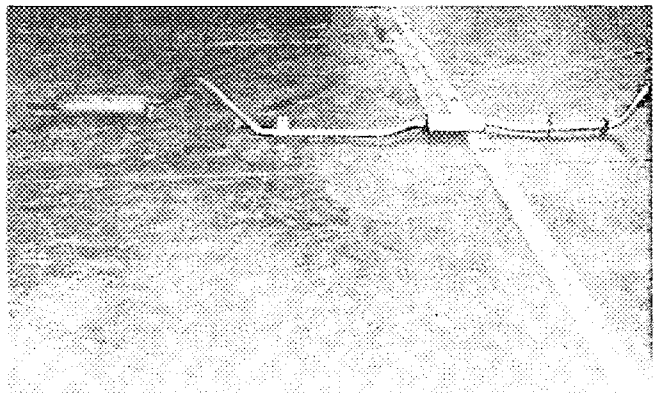
G, rear brake, drum removed or disc with caliper(s)



H, gear-box, view from side



I, silencer + exhaust pipes after exhaust manifold.



Make

NISSAN

Model

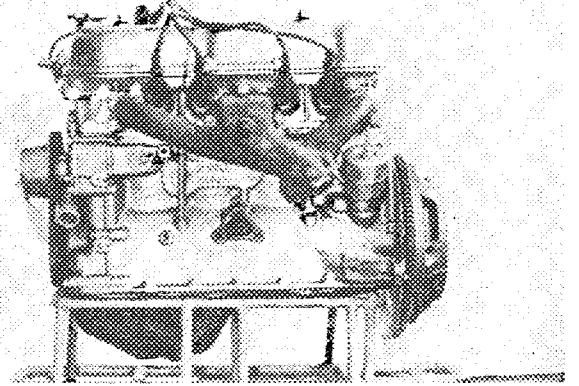
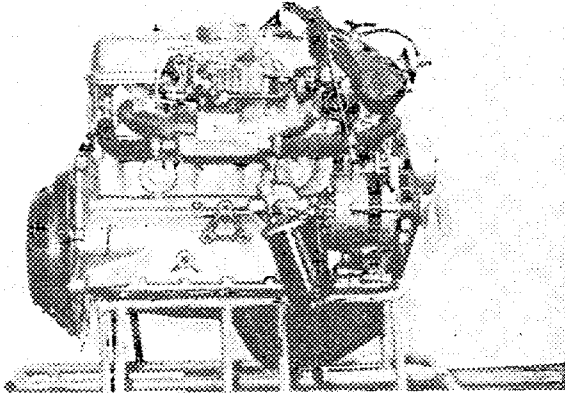
C(L)10

F. I. A. Rec. No

Photograph

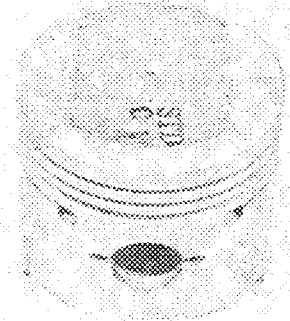
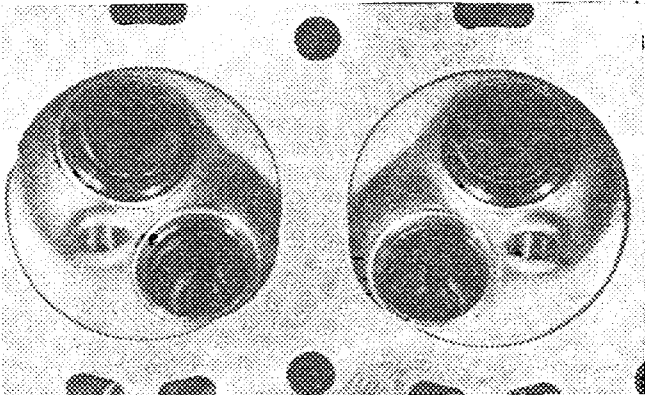
engine unit out of car, from right. With clutch and accessories but without air filter nor gear-box.

Engine unit out of car, from left. With clutch and accessories but without gear-box nor air filter.



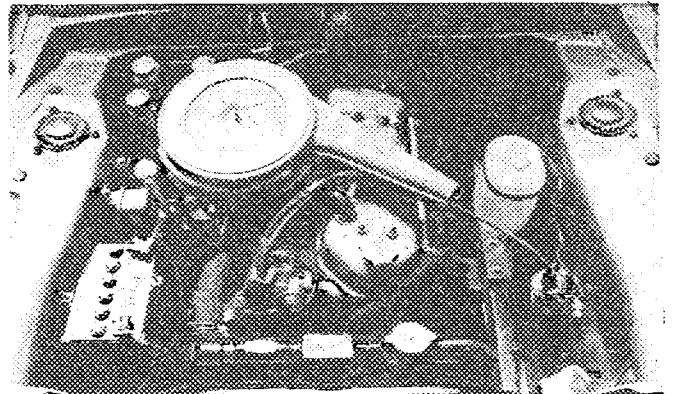
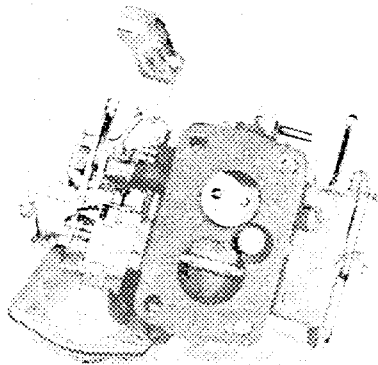
L, combustion chamber

M, piston crown



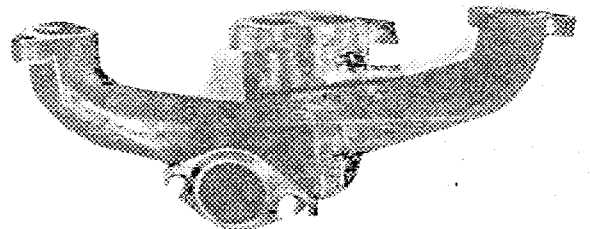
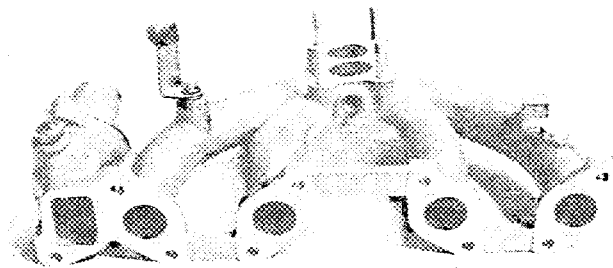
N, Carburettor (view from side of manifold)

O, engine in car with all accessories, bonnet open or removed.



P, inlet manifold

Q, exhaust manifold



44φ