

INTRODUCTION

Z.ONE.DATSUN

CONTENTS

INTRODUCTION

GENERAL DESCRIPTION OF NISSAN PARTS CATALOG	2
BRIEF SPECIFICATIONS	3
HOW TO USE THIS PARTS CATALOG	5
HOW TO INTERPRET THE TEXT	6
GROUP SYMBOLS AND ABBREVIATIONS	8
CAR NO. AND ENGINE NO.	12
EXPLANATION OF NISSAN PARTS NUMBER SYSTEM	18
TABLE OF SECTION AND CHARACTER NO.	20
TABLE OF PART TYPE	23
CONVERSION LIST	31
ALPHABETICAL SECTION INDEX	32
ILLUSTRATION INDEX	36

ENGINE

L14

L16

ENGINE FITTING

ELECTRICAL

POWER TRAIN

AXLE

BRAKE

STEERING

BODY (SEDAN)

BODY (HARDTOP)

MISCELLANEOUS

PART NO. INDEX

ALPHABETICAL INDEX

GENERAL DESCRIPTION OF NISSAN PARTS CATALOG

This catalog has been prepared for Nissan genuine parts for the Datsun 140J, 160J model 710. All the parts presented here are manufactured and supplied according to our quality standards. Be sure to use only Nissan genuine parts to insure maximum performance from our vehicles.

In order to bring better customer service and spare parts supply, please familiarize yourself with the Nissan parts catalog system.

KEEP THE PARTS CATALOG ALWAYS UP TO DATE

A *spare parts bulletin* is issued every 1st and 15th of each month as a supplement to inform you of the latest modifications. The bulletins include all the accumulated changes up to the previous edition. Keep the latest spare parts bulletin only.

Revisions to the catalog are made to replace particular sections when amendments are required in *March, June* and *September* of each year. The accumulated information of the spare parts bulletins for the past three months are completely transferred to these revisions.

An *overall revision* comes once a year in December. It carries all the sections for an entire replacement of the parts catalog.

HOW TO PLACE YOUR ORDERS FROM THE PARTS CATALOG (FOR DISTRIBUTORS ONLY)

Typewrite your order on the given Nissan spare parts order sheet, form No. 109-051.

At least the *Part number* and the *quantity* must be filled in accurately. Otherwise our computer may reject your order.

In the case that you can not find the part number which you require we shall be very glad to take care of this problem after verifying its availability. Therefore, place your order on another order sheet as a *conditional order*. Please specify precisely the part name, the quantity, the place where it is attached or include a photograph, an illustration copy or a sample for identification.

HOW TO COMPARE THE CONFIRMATION SHEET WITH THE PARTS CATALOG (FOR DISTRIBUTORS ONLY)

Although all parts contained here are, in principle, available for supply, you may find some parts cancelled by being sorted as F/# U, cancel code 9 on your confirmation sheet. If this is the case, kindly inform us of the part numbers, the catalog publication number, the page and the month of revision with your order reference, Nissan serial number. We shall be glad to advise you of the availability by the revised confirmation sheet as soon as possible.

The parts you ordered may be cancelled by the following reasons on your confirmation sheet. The latest availability for these parts will be informed through a spare parts bulletin or revisions.

C.C. (Cancel Code)	Cancel Reason
5	out of production
6	not for sale
7,8	others
9	unmatched

For further details, refer to the Nissan Parts Standard Operation Procedures, pub. No. EC-009.

BRIEF SPECIFICATIONS

DIMENSION AND WEIGHT:

MODEL	U 710S	JL710	JPL710	JPL710AT			KPL710TK KPL710FK KPL710TKQ KPL710FKQ	KPL710ATK KPL710ATKQ
ITEM	U 710ST	JL710T	JPL710T	JPL710ATQ	PL710TK	JKPL710T		
	U 710STQ	JL710TQ	JPL710TQ					
Overall length	4,120mm (162.2 in)	↗	↗	↗	↗	↗	↗	↗
Overall width	1,580mm (62.2 in)	↗	↗	↗	↗	↗	↗	↗
Overall height	1,405mm (55.3 in)	↗	↗	↗	↗	1,385mm (54.5 in)	↗	1,375mm (54.1 in)
Wheelbase	2,450mm (96.5 in)	↗	↗	↗	↗	↗	↗	↗
Tread front	1,290mm (50.8 in)	↗	↗	↗	1,310mm (51.6 in)	1,290mm (50.8 in)	1,310mm (51.6 in)	↗
Tread rear	1,310mm (51.6 in)	↗	↗	↗	1,320mm (52.0 in)	1,310mm (51.6 in)	1,320mm (52.0 in)	1,320mm (52.0 in)
Seating Capacity	5 Persons	↗	↗	↗	↗	↗	↗	↗

ENGINE:

Model	J710series	JP710series JKP710series	P710series KP710series
Design	L14 4 cyl. in line 4 cycle O.H.C. Gasoline	L16 4 cyl. in line 4 cycle O.H.C. Gasoline	L16 4 cyl. in line 4 cycle O.H.C. Gasoline SU Carburetor
Bore	83.0 mm (3.27 in)	83.0 mm (3.27 in)	83.0 mm (3.27 in)
Stroke	66.0 mm (2.60 in)	73.7 mm (2.90 in)	73.7 mm (2.90 in)
Displacement	1,428 cc (87.1 cu.in)	1,595 cc (97.3 cu. in)	1,595 cc (97.3 cu.in)

FUEL SYSTEM: "NIKKI" dual barrel down draft type carburetor ("HITACHI" variable venturi side draft type carburetor for P710 & KP710 series only); Mechanical type diaphragm pump; Paper element type air cleaner; Fuel tank capacity 50 ℓ (13.2 U.S. gal.) [55 ℓ (14.5 U.S. gal.) for P710 & KP710 series only.].

LUBRICATION SYSTEM: Pressure feed with full-flow type oil filter; Trochoid type pump; Oil capacity 4.3 ℓ (1.1 U.S. gal.).

IGNITION SYSTEM: Coil and distributor with mechanical and vacuum control.

COOLING SYSTEM: Pressurized radiator with centrifugal pump; Pellet-type thermostat and fan; Cooling water capacity 6.5 ℓ (4-1/2 U.S. gts.).

ELECTRIC SYSTEM: 12 volt; 40 AH, 50 AH or 60 AH battery; 50 AH alternator with regulator; 1 KW (1.4 HP) magnetic shift starter (negative earth).

TRANSMISSION:

[MANUAL] 3,4 or 5 forward speeds and 1 reverse; all synchromeched on forward gears.

[AUTOMATIC] Fully automatic 3 speed; Floor shift lever.

TRANSMISSION TYPE AND APPLICATIONS:

TYPE	R3W65L (3-SPEED)	F4W63L (4-SPEED)	FS5W63A (5-SPEED)	JN71B (AUTOMATIC)
T/M CONTROL METHOD	COLUMN SHIFT	FLOOR SHIFT	FLOOR SHIFT	FLOOR SHIFT
Gear ratio				
1 st	3.263	3.657	3.382	2.458
2 nd	1.645	2.177	2.013	1.458
3 rd	1.000	1.419	1.312	1.000
4 th	—	1.000	1.000	—
5 th	—	—	0.854	—
Rev.	3.355	3.638	3.570	2.182

FINAL GEARS:

Hypoid type

TYPE	H165A (for Rigid axle)			R160 (for independent rear suspension)		
	Gear ratio	3.889	4.110	4.375	3.900	4.111
Applied model	JPL710 JPL710T JKPL710T JPL710TQ	JL710 JL710S JL710ST JL710T JPL710AT JL710STQ JL710TQ JPL710ATQ	OPTION	PL710TK KPL710TK KPL710TKQ	KPL710FK KPL710ATK KPL710FKQ KPL710ATKQ	OPTION

CLUTCH: Single dry disc with cushioning springs; Single, dry plate with diaphragm spring clutch; Diameter 200 mm (7.87 in), hydraulic operation by-pendant pedal.

FRONT SUSPENSION: Independent strut type with coil springs and a stabilizer.

REAR SUSPENSION:

[STD & DX] Rigid axle, semi-elliptic leaf springs and telescopic double acting shock absorbers.

[SSS] Independent semi-trailing arm with coil springs and telescopic double acting shock absorbers.

STEERING: Recirculating ball type gear.

WHEELS AND TIRES:

Wheel size	Tire size	Applied model
4-1/2 x 13	5.60-13-4PR	STD & DX
4-1/2 x 13	6.45-S13-4PR	SSS
	165SR13	EUROPE

BRAKES:

[STD & DX] Hydraulic; Front two-leading shoe; Rear leading and trailing shoe; Brake drum dia. 228 mm (9.0 in); Parking brake mechanically operated on rear wheels only.

[Standard for SSS & Europe; Optional for other models] Hydraulic; Front disc brake; Rear leading and trailing shoe; Brake drum dia. 228 mm (9.0 in); Parking brake mechanically operated on rear wheels only.

LAMPS: Two dual head lights (sealed beam) with dipping; Two parking and turn signal lights; Two combined stop, tail and turn signal lights; Room light; Rear license light; Back up lights; Side directional lights.

INSTRUMENTS: Speedometer; Fuel gauge; Water temperature gauge; Oil pressure warning light; Turn signal pilot light; Main beam warning light; Parking brake warning light; On instrument panel, lighting switch, choke control knob, windshield wiper switch, Cigarette lighter. Hazard warning switch.

BODY WORKS: Four-door sedan; Two-door hardtop; Five seater with adjustable front seats; All steel body fully upholstered with vinyl leather; Dual self-parking windshield wiper; Room light-door switches on both sides; Turn signal lever with dimmer switch unit; Interior back mirror; Safety glass on all windows and doors; Two sunvisors; Ash trays, front and rear; Vinyl floor mat; Safety belt anchorages; Fuel tank filler cap lock; Trunk floor mat; Moulding sill.

HOW TO USE THIS PARTS CATALOG

Reading these instructions carefully will help you to make the best use of this parts catalog. This catalog comprises the following groups; engine, engine fitting, electrical, power train, axle, brake, steering, body and miscellaneous. On the yellow sheet at the beginning of each group you can find the section titles included in it.

- (A) Use the following process in finding a part number you are looking for:
1. Turn to the yellow sheet and find a pertinent section.
 2. The illustration given with each section will guide you to the part number through the key number allocated to each item.
- (B) The following process should be taken in getting a detailed description of the part number you already know.
1. Turn to the part number index. The part number should be classified in numerical order.
 2. You can find the section number and page.
- (C) You should take the following process in finding the part number when only the part name is known.
1. Turn to the alphabetical part name index. The part name should be classified in alphabetical order.
 2. You can find the section number and page.

Z.ONE.DATSUN

GEAR CARRIER & GEAR

② S	③ KEY NO.	④ PART NO.	⑤ DESCRIPTION	⑦ QTY	⑧ UNIT PKG FOR INST	⑨ APPLIED MODEL	⑩ APPLIED DATE		⑪ ICA		⑫ SUPERSEDED
							FROM	UP TO	N	F	
*	101	38300-14900	ASSY-CARRIER,GEAR,WITH GEAR (39:8)	1		J13,J15		0965			
*	02	38300-14901	ASSY-CARRIER,GEAR,WITH GEAR (39:8)	1	1	J13(4 SPEED)	1065	1069	Y	N	38300-14900
	03	38300-80300	ASSY-CARRIER,GEAR WITH GEAR (39:8)	1	1	J13(LG,LGT)	1169	0170	Y	Y	38300-14901
*	04	38300-28000	ASSY-CARRIER GEAR WITH GEAR (39:8)			J13	1169	0170	Y	N	38300-14901
	05	38300-80400	ASSY-CARRIER GEAR (39:8)			LG,LGT	0270		Y	Y	38300-28000
	06	38300-82901	ASSY-CARRIER,GEAR (37:8)	1	1	J13,J15	0270		N	N	38300-80300
	07	38300-82900	ASSY-CARRIER GEAR WITH GEAR (37:8)	1	1	J13,J15			Y	Y	38300-82901
*	201	38310-07200	ASSY-CARRIER,GEAR	1		J13		0965			
	02	38310-14800	ASSY-CARRIER GEAR	1	1		1065		Y	N	38310-07200
*	301	38315-01302	STUD-DIFFERENTIAL	4	AR				Y	N	46035-01300
	02	38315-13200	STUD-DIFFERENTIAL	4	AR				Y	Y	38315-01302

Followings are explanations of each column in the text. A sample is given above.

① Section Title
② S

When you place your orders, please notice the following two symbols in this column.

*...Non-available item or old item superseded by a new one.

#...Conditional order item. Separate your orders from ordinary ones.

③ KEY NO.

The key numbers appear in numerical order corresponding to those in the illustration. If more than one part number is shown under the same key number, the part numbers should be arranged under different suffixes.

④ Level

The levels appear in four ranks from left to right showing the relations between assembly and components. The assemblies in higher levels include the components in lower levels.

⑤ PART NO.

The part number is shown in this column. It is as a rule ten digits.

⑥ DESCRIPTION

The description for the part number is shown in this column.

⑦ Q'TY

The quantity of the part used in this section appears in this column. "AR" stands for as required.

⑩ UNIT PKG FOR DIST (For distributors only)

This column gives the minimum sales unit for supply. The quantity of the supply for stock orders should be the multiples of this unit. It will make it easy to handle the package and avoids unnecessary delay in shipment.

⑪ APPLIED MODEL

The models are indicated according to the group symbols. When the part is applied to more than one model, the models are shown individually. When one model type is defined by more than one group symbol, the subordinate model type is indicated in parentheses.

⑫ APPLIED DATE

The date which the part is newly equipped on the vehicle or superseded by a new one on our assembly line, is indicated in this column. At the time of the annual model change the date will bring you the actual car number as shown on the page of "Car Number and Engine Number" in the introduction. In the case of ordinary modifications, the actual car numbers or engine numbers are shown as required.

⑬ ICA

This column will help you to clarify the relationship between the new part in the part number column and the former one in the superseded column. Column "N" will indicate the interchangeability of the new part to the former one and the column "F" shows that of the former part to the new one. In this column the following three symbols indicate the relations.

Y (Yes)

There is interchangeability.

N (No)

There is no interchangeability.

C (Conditional)

There is conditional interchangeability.

In the case that you find C in this column, the condition is indicated in the foot note.

● SUPERSEDED

The former part number appears in this column.

GROUP SYMBOLS AND ABBREVIATIONS

Model	Modül code	L14	L16	STD	DX	SSS	SEDAN	4-DOOR	HARDTOP	MANUAL	3-SPEED (COLUMN)	4-SPEED	5-SPEED	FLOOR	AUTO	EUROPE
	Symbol															
JL710	L	<input type="radio"/>			<input type="radio"/>		<input type="radio"/>	<input type="radio"/>		<input type="radio"/>	<input type="radio"/>					
JL710S	S	<input type="radio"/>		<input type="radio"/>			<input type="radio"/>	<input type="radio"/>		<input type="radio"/>	<input type="radio"/>					
JL710ST	ST	<input type="radio"/>		<input type="radio"/>			<input type="radio"/>	<input type="radio"/>		<input type="radio"/>		<input type="radio"/>		<input type="radio"/>		
JL710T	T	<input type="radio"/>			<input type="radio"/>		<input type="radio"/>	<input type="radio"/>		<input type="radio"/>		<input type="radio"/>		<input type="radio"/>		
JPL710	P		<input type="radio"/>		<input type="radio"/>		<input type="radio"/>	<input type="radio"/>		<input type="radio"/>	<input type="radio"/>					
JPL710T	PT		<input type="radio"/>		<input type="radio"/>		<input type="radio"/>	<input type="radio"/>		<input type="radio"/>		<input type="radio"/>		<input type="radio"/>		
JPL710AT	PAT		<input type="radio"/>		<input type="radio"/>		<input type="radio"/>	<input type="radio"/>							<input type="radio"/>	
PL710TK	PTK		<input type="radio"/>			<input type="radio"/>	<input type="radio"/>	<input type="radio"/>		<input type="radio"/>		<input type="radio"/>		<input type="radio"/>		
JKPL710T	KPT		<input type="radio"/>		<input type="radio"/>				<input type="radio"/>	<input type="radio"/>		<input type="radio"/>		<input type="radio"/>		
KPL710TK	KPTK		<input type="radio"/>			<input type="radio"/>			<input type="radio"/>	<input type="radio"/>		<input type="radio"/>		<input type="radio"/>		
KPL710FK	KPFK		<input type="radio"/>			<input type="radio"/>			<input type="radio"/>	<input type="radio"/>			<input type="radio"/>	<input type="radio"/>		
KPL710ATK	KPAK		<input type="radio"/>			<input type="radio"/>			<input type="radio"/>						<input type="radio"/>	
JL710STQ	STQ	<input type="radio"/>		<input type="radio"/>			<input type="radio"/>	<input type="radio"/>		<input type="radio"/>		<input type="radio"/>		<input type="radio"/>		<input type="radio"/>
JL710TQ	TQ	<input type="radio"/>			<input type="radio"/>		<input type="radio"/>	<input type="radio"/>		<input type="radio"/>		<input type="radio"/>		<input type="radio"/>		<input type="radio"/>
JPL710TQ	PTQ		<input type="radio"/>		<input type="radio"/>		<input type="radio"/>	<input type="radio"/>		<input type="radio"/>		<input type="radio"/>		<input type="radio"/>		<input type="radio"/>
JPL710ATQ	PATQ		<input type="radio"/>		<input type="radio"/>		<input type="radio"/>	<input type="radio"/>							<input type="radio"/>	<input type="radio"/>
KPL710TKQ	KPTKQ		<input type="radio"/>			<input type="radio"/>			<input type="radio"/>	<input type="radio"/>		<input type="radio"/>		<input type="radio"/>		<input type="radio"/>
KPL710FKQ	KPFKQ		<input type="radio"/>			<input type="radio"/>			<input type="radio"/>	<input type="radio"/>			<input type="radio"/>	<input type="radio"/>		<input type="radio"/>
KPE710ATKQ	KPAKQ		<input type="radio"/>			<input type="radio"/>			<input type="radio"/>						<input type="radio"/>	<input type="radio"/>

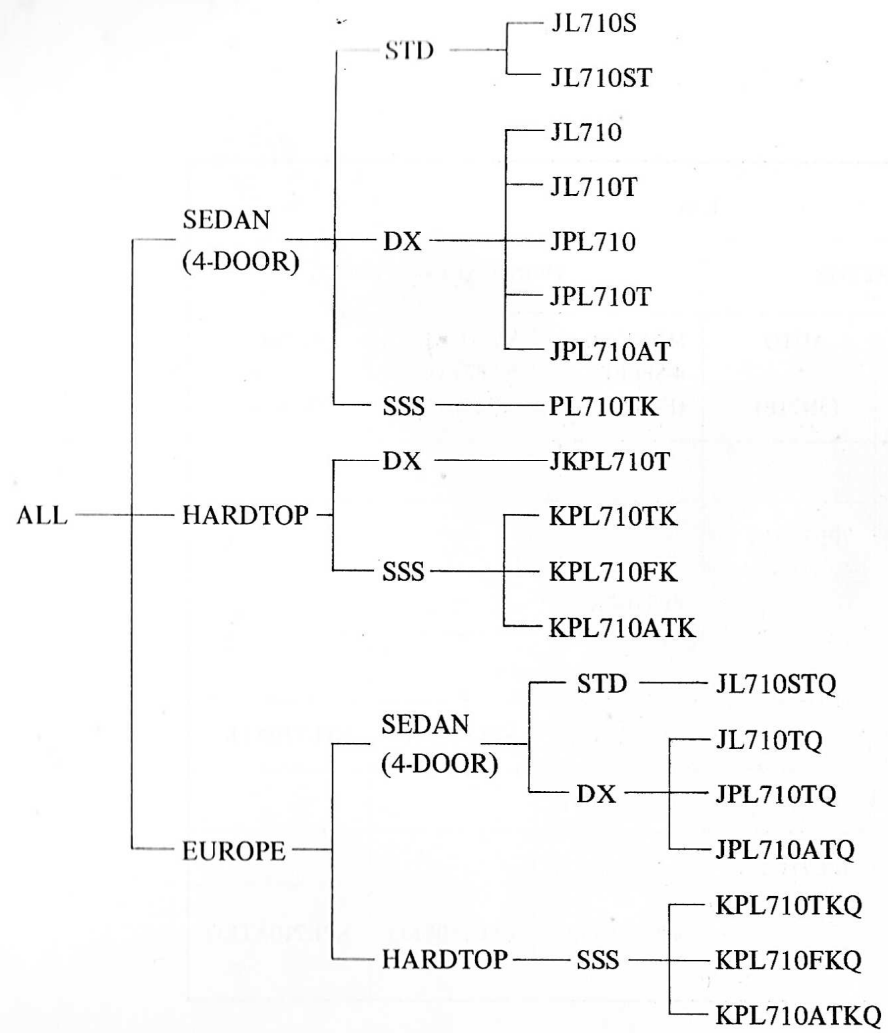
DEFINITION OF ABBREVIATIONS

- OP.....The part is optionally equipped on the model.
- EXC.....The part is equipped except on the particular model.
- EUROPE.....The part is exclusively used for EUROPE.
- FRANCE.....The part is exclusively used for FRANCE.

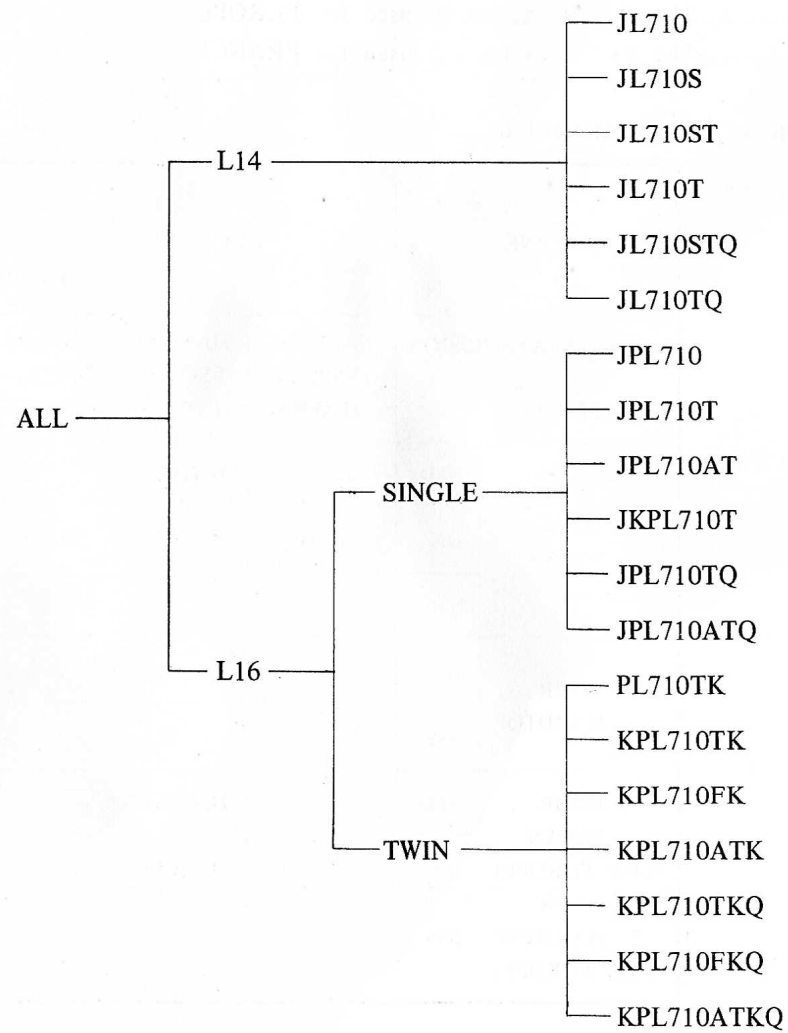
CLASSIFICATION OF MODELS

ENGINE		L14		L16					
				SINGLE CARBURETOR			TWIN CARBURETOR		
TRANSMISSION		MANUAL 3-SPEED (F3W65)	MANUAL 4-SPEED (F4W63)	MANUAL 3-SPEED (F3W65)	MANUAL 4-SPEED (F4W63)	AUTO (3N71B)	MANUAL 4-SPEED (F4W63)	MANUAL 5-SPEED (FS5W63A)	AUTO (3N71B)
SPEC.									
4 DOOR SEDAN	STD	JL710S	JL710ST						
	DX	JL710	JL710T	JPL710	JPL710T	JPL710AT			
	SSS						PL710TK		
2 DOOR HARDTOP	DX				JKPL710T				
	SSS						KPL710TK	KPL710FK	KPL710ATK
4 DOOR SEDAN (FOR EUROPE)	STD		JL710STQ						
	DX		JL710TQ		JPL710TQ	JPL710ATQ			
2 DOOR HARDTOP (FOR EUROPE)	SSS						KPL710TKQ	KPL710FKQ	KPL710ATKQ

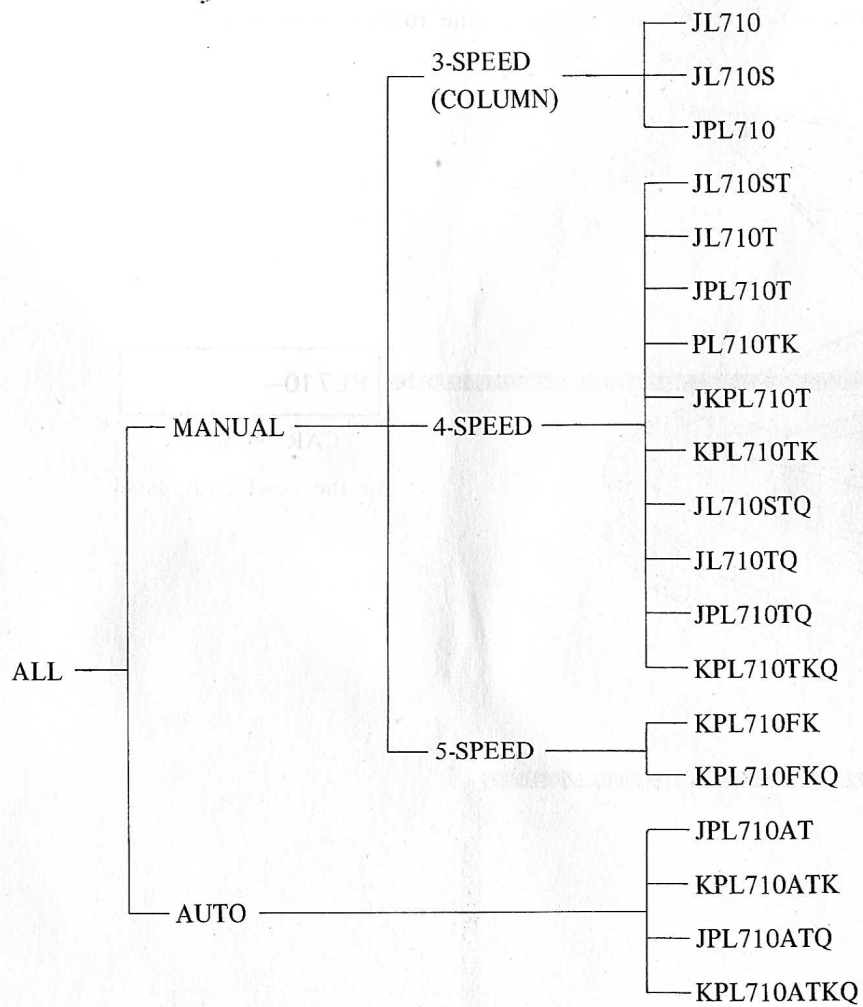
STYLE GROUP



ENGINE GROUP

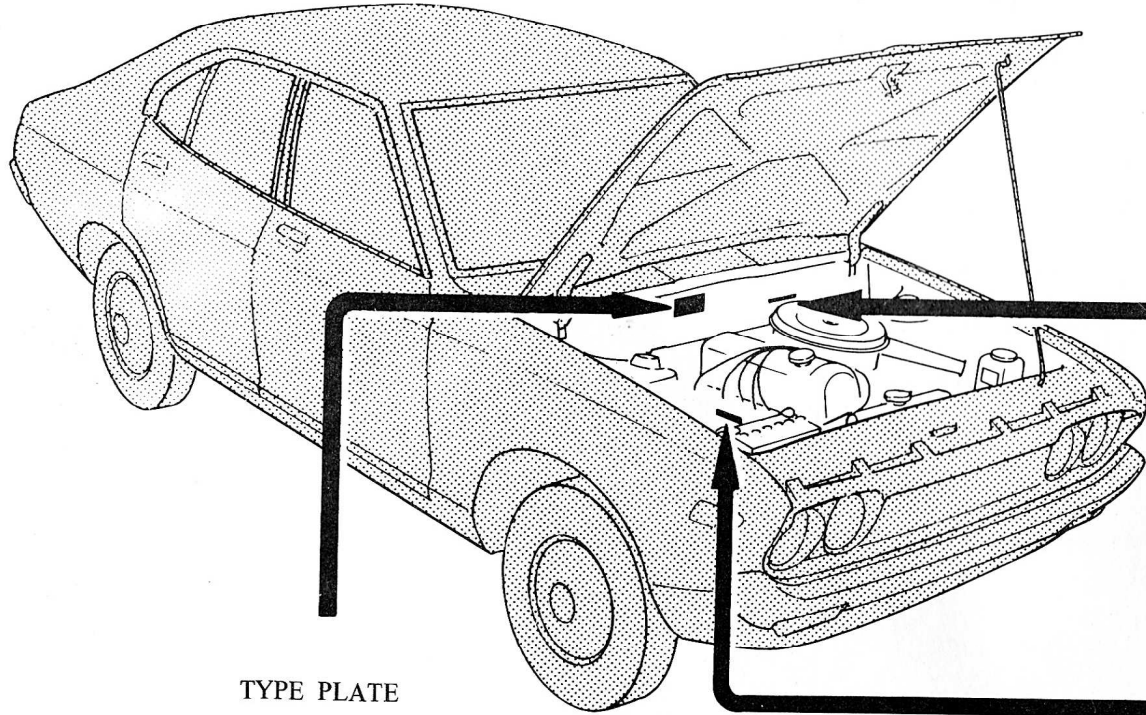


TRANSMISSION GROUP



CAR NO. AND ENGINE NO.

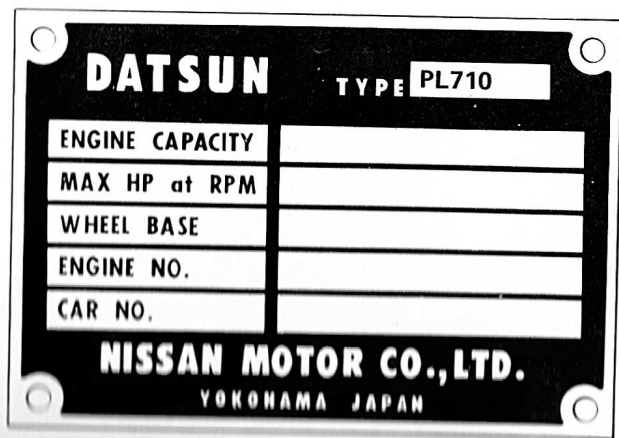
To choose the right parts, always refer to the car Nos. or Engine Nos., which are located in the engine room (see below).



PL710-

CAR NUMBER
on the cowl dash panel

TYPE PLATE
(CAR NUMBER PLATE)
on the cowl dash panel



L16-

ENGINE NUMBER
on the wall of the cylinder block

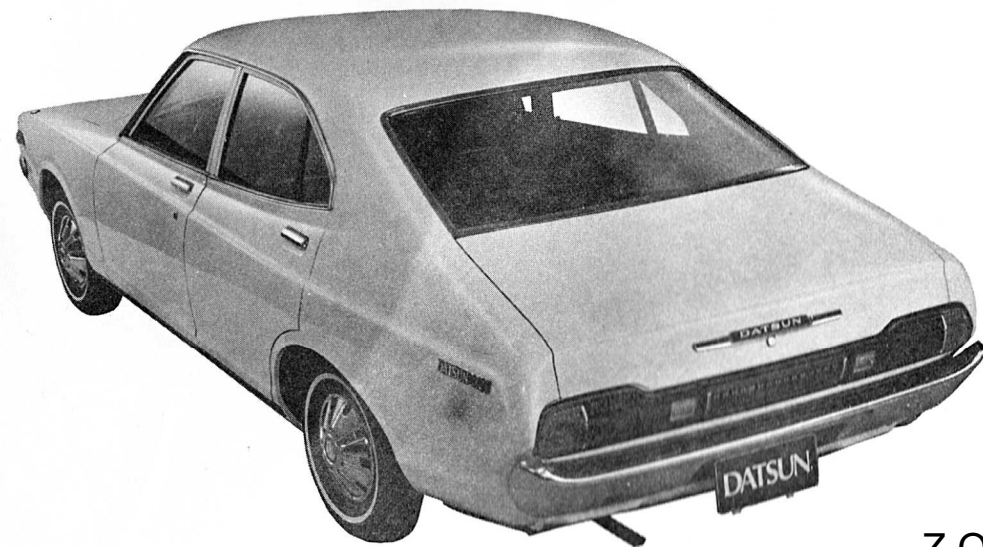
Z.ONE.DATSUN

DATSUN 140J SEDAN Standard



Z.ONE.DATSUN

DATSUN 140J · 160J SEDAN Deluxe



Z.ONE.DATSUN

DATSUN 160J SEDAN SSS

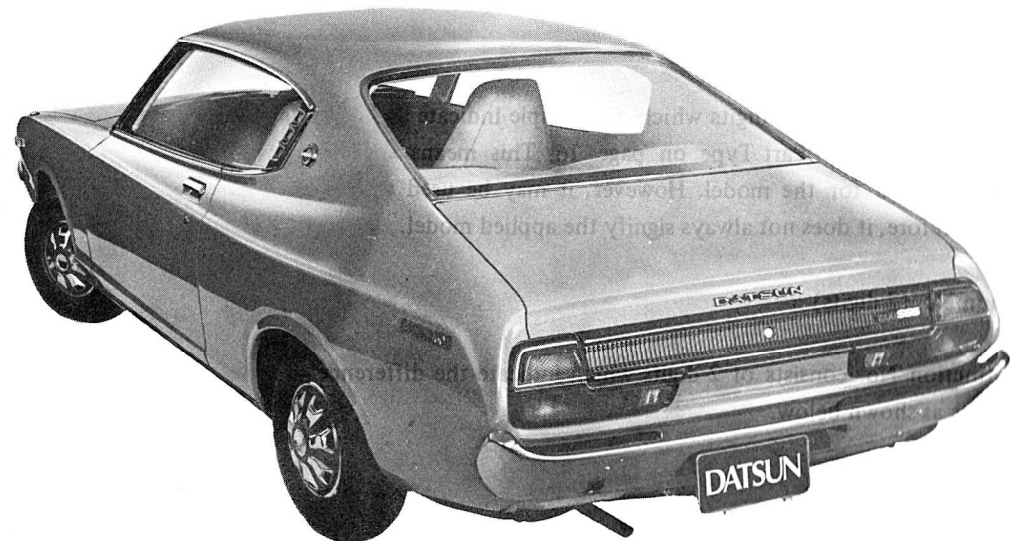


DATSUN 160J HARDTOP Deluxe



Z.ONE.DATSUN

DATSUN 160J HARDTOP SSS



EXPLANATION OF NISSAN PARTS NUMBER SYSTEM

Our part number as a rule consists of ten digits which are made up of four factors as follows. However, in order to standardize small parts such as screws, washers, bolts, nuts and so on, which are often used on our models, we specify them as NES part according to the Nissan Engineering standard (N.E.S.). These NES parts in principle consist of six digits or eight digits.

<u>Section No.</u>	<u>Character No.</u>	<u>Part Type No.</u>	<u>Distinction No.</u>
○ ○	○ ○ ○	○ ○ ○	○ ○

1. Section No. (2 digits)

The Section No. consists of 2 digits which indicate the major function of parts.

2. Character No. (3 digits)

The Character No. consists of 3 digits which indicate minor classification in each Section as shown by the Table of Section and Character No. on Page 23. The character No. of 000 or X00 signifies the assembly parts.

3. Part Type No. (3 digits)

The Part Type consists of 3 digits which in principle indicate the applied model as shown by the Table of Part Type on page 26. This means that the part is originally designed for the model. However, it may be used widely over our models. Therefore, it does not always signify the applied model.

4. Distinction No. (2 digits)

The Distinction No. consists of 2 digits which indicate the difference between similar parts as shown below.

Kinds of Distinction	Distinction No.
a. Similarity	00 - 19, 60 - 69
b. Exclusive Service Use	25 - 29, 75 - 79
c. Material	40 - 45, 80 - 85
d. Processing	30 - 39, 90 - 94 50 - 59,

Note; The other Distinction Nos. are unset.

a. Similarity

When parts are only slightly change, the distinction is shown by this No.. Similar or colored parts are distinguished by this No..

For example;

74902-11400	Carpet (red)
74902-11401	Carpet (blue)
74902-11402	Carpet (brown)

b. Exclusive Service Use

Repair kits or sets which are used exclusively for service, are set by this No..

For example;	46010-10800	Brake Master Cylinder assembly
	46010-10825	Repair Kit

c. Material

The difference of materials is distinguished by this No..

d. Processing

For the convenience of our production line process, in the case we can not supply by the original part No., the sub-assembly is supplied by this No..

For example;	20132-08750	Clamp sub-assembly
		Components
	20132-08700	— Clamp-lower
	20133-08700	— Clamp-upper
	1-14520-1	— Bolt
	9-15115-1	— Washer

5. Except those numerical part numbers, there are the part numbers beginning with letters. They are the part numbers exclusively reserved for service use.

TABLE OF SECTION AND CHARACTER NO.

Z.ONE.DATSUN

S-Section No.

C - Character No.

Classifi- cation		Section	Classifi- cation		Section	Classifi- cation		Section				
S	C		S	C		S	C		S	C		
10		Engine complete section		200	Fuel tank		500	Regulator		200	3-shaft gear train	
	000	Engine complete		400	Fuel tank mounting					600	Synchronizer parts	
	100	Engine ass'y		500	Fuel piping	24		Electric section No. 3		700	Speed-drive parts	
11		Engine section No. 1	18		Engine control section		000	Wiring		800	Shift-control parts	
	000	Cylinder parts			Accelerator pedal		100	} Cable parts		900	Fork & levers	
	100	Oil pan parts		000	Accelerator link		200		} Battery	33		Auxiliary gear box section
	200	Engine support, front		100	Engine control		400					
	300	Engine support, rear		400			500					
	400	Engine stabilizer	19		Decomp & governor section	25		Electric section No. 4		100	} Transfer parts	
12		Engine section No. 2			Decomp parts		000	Meters		200		
	000	Piston, pin & ring		000	} Governor parts		100	Meter parts		300	Power take off gear	
	100	Connecting rod		100			200	Switches	34			Transmission control
	200	Crank shaft		200			300	Switch & parts		100		Control device
	300	Flywheel		300		400	Fuse & holder parts		400		Linkage	
13		Camshaft & valve section	20		Exhaust section	26		Electric section No. 5		500	Linkage parts	
	000	Camshaft & timing gear		000	Exhaust tube		000	} Lamps No. 1 (Outside)	36		Auxiliary brake section	
	200	Valve parts		100	Muffler		100			100		Drum & consermings
14		Manifold section		200	Tail tube		200	Lamps No. 2 (Inside)		300	Hand brake lever	
	000	Manifold parts	21		Cooling system		300	Horn		400	Hand brake cable	
	300	Ejector ass'y		000	Water pump	27		Room heater & radio		500	Linkage on axle	
15		Lubrication section		200	Thermostat		000	Room heater		600	Linkage parts	
	000	Oil pump		300	Oil cooler		100	Control box	37		Propeller shaft group	
	100	Oil tube		400	Radiator		300	Radio & clock		000	Propeller shaft mounting	
	200	Oil filter		500	Hose & mounting parts					100	Joint & yokes	
16		Fuel section No. 1	22		Electric section No. 1	30		Clutch group		200	Propeller shaft primary	
	000	Carburetor		100	} Distributor		000	Clutch with housing		300	Secondary propeller shaft	
	400	Gasoline strainer		200		Vacuum control		100	Clutch disc		500	Center bearing & hanger
	500	Air cleaner		300	Plug-spark & cords		200	Clutch cover & pressure plate	38		Final drive unit	
	600	Fuel supply system		400			400	Bell housing		100	Drive pinion & gear	
	700	} Injection pump	23		Electric section No. 2		500	Clutch with drawal		200	Companion flange	
	800				100	} Generator		600	Clutch control		300	Gear carrier
17		Fuel section No. 2		200			32		Transmission group		400	Differential gear
	000	Fuel pump		300	} Starter motor		000	Transmission ass'y		500	Front drive parts	
				400				100	Case, extension covers			

Classification		Section	Classification		Section	Classification		Section	Classification		Section	
S	C		S	C		S	C		S	C		
40		Front axle section		400	Steering wheel		500	Radiator core support		400	Cluster lid	
	000	Front axle		500	Steering linkage		600	Bumper apron		500	Cluster lid	
	200	Hub & drum					650	Front bumper		600	Glove pocket & lid	
	300	Road wheel	50		Frame section		800	Radiator shell fitting		800	Instrument fitting	
	500	Front axle parts		100	} Frame parts					900	Instrument trimming	
			200									
41		Front brake section				63		Fender section	72		Windshield section	
	000	Front brake	51		Cross member section		100	Front fender		100	W/S outer & inner	
	100	Wheel cylinder		000	Cross member parts		800	Fender fitting		600	Glass & weatherstrip	
				100	Hook parts					800	W/S fitting	
43		Rear axle section				64		Hood ledge section				
	000	Rear axle	54		Front suspension section		100	Hood ledge	73		Roof section	
	100	Rear axle parts		000	Front spring		800	Hood ledge fitting		100	Roof panel	
	200	Hub & drum		200	Spring mounting parts					200	Roof rail	
	300	Road wheel		300	Cross member-suspension	65		Hood section		800	Roof fitting	
				400	Ass'y suspension		100	} Hood		900	Roof trimming	
44		Rear brake section					200			74		Floor section No. 1
	000	Rear brake	55		Rear suspension section		300					100
	100	Wheel cylinder		000	Rear spring		400	} Hood hinge			200	Toe board
			200	Spring mounting parts		500				300	} Front floor	
46		Master cylinder, pedal & piping	56		Shock absorber section		600	} Hood lock		400		
	000	Piping & cylinder ass'y		100	Front shock absorber		700				500	Rear floor
	100	Master cylinder parts		200	Rear shock absorber & stabilizer	66		Hood fitting		600	Under sill	
	200	Brake piping					100	Cowl section		700	Seal riser	
	300	Brake tube parts		57	Spare tire section		300	Front pillar		750	Tunnel	
	400	Pedal parts		200	Spare tire carrier		400	Cowl top		800	Floor member	
	500	Dust seal & mounting parts					500	Cowl side		900	Floor trimming	
				60	Body complete white body		800	Ventilator				Body side section No. 1
	47		Power brake section		000	Body front & body main		900	Cowl fitting	76		} Body side frame
		100	Vacuum tank		100	Cab complete			Cowl trimming		100	
200		} Hydraulic power cylinder					67	Dash section		200		
300				61		Body front group		100	} Dash		300	Body side panel
400			Vacuum tube		000	Front body ass'y		200				400
500	Reservoirs mount parts					300	Dash lower		500	Center pillar		
48		Steering section			Radiator shell & bumper section		800	Dash fitting		600	Rear pillar	
	000	Steering ass'y		100	} Radiator shell		900	Dash trimming		700	Rear wheel house	
	100	Roller shaft		200							800	Body side fitting
	200	Steering cover		300	} Radiator grille		68	Instrument section		900	Body side trimming	
	300	Steering mounting parts		400				100	} Instrument			
							200			78		100
						300						Rear fender

Classification		Section	Classification		Section	Classification		Section	Classification		Section
S	C		S	C		S	C		S	C	
79		Back panel section	85		Rear bumper section	300		Back mirror			
	100	} Back panel		100	Rear bumper apron	400		Sun visor			
	200				200	Rear bumper bracket	500		Ash tray		
	300	Rear corner		800	Rear bumper fitting	600		Fire extinguish			
	400	Rear seat back panel				700		Assist rail			
	700	Rear window	86		Front seat section No. 1	800		Package tray			
	800	Back panel fitting		100	Seat cushion frame	900		Body name & caution plate			
	900	Back panel trimming		200	Seat back frame						
				300	} Seat cushion & trim						
				400			97		E. T. C. section No. 2		
80		Front door section No. 1		500	Seat adjusting		100	Reflector			
	100	Front door inner, outer		600	Seat back & trim		200	Plate meter			
	200	Ventilator, sash		700	Center arm rest & trim						
	300	Door window		800	Seat fitting	99		Car complete & tool section			
	400	Hinge and check link						Car complete			
	500	} Lock, remote control & handle						Chassis complete			
	600			88		Rear seat section No. 1		000	Car complete		
	700	Window regulator & handle		100	Seat cushion frame		100	Chassis complete			
	800	Front door fitting		200	Seat back frame		500	Tool & setting parts			
	900	Front door trimming		300	Seat cushion & trim						
				500	Seat adjusting						
				600	Seat back & trim						
				700	Center arm rest & trim						
				800	Seat fitting						
82		Rear door section No. 1									
	100	Rear door inner, outer									
	200	Ventilator, sash									
	300	Door window		93							
	400	Hinge & check link			Rear body section No. 1						
	500	} Lock, remote control & handle		100	Guard frame						
	600				200	Header board					
	700	Window regulator & handle		300	Side board & side gate						
	800	Rear door fitting		400	Rear gate						
	900	Rear door trimming		500	} Rear body floor						
				600							
				650	Wheel housing						
				700	Rear body sill						
				800	Rear body fitting						
				900	Rear body trimming						
84		Trunk section									
	100	Trunk floor									
	200	Trunk side									
	300	Trunk lid		95							
	400	} Trunk lid lock, handle & support			Body mounting section						
	500				100	Body mounting					
	600										
	800	Trunk fitting		96							
	900	Trunk trimming			E. T. C. section No. 1						
					Step & consernings						
					Licence plate bracket						

Z.ONE.DATSUN

TABLE OF PART TYPE

Small Type Part		Vehicle Type	Part Type	Vehicle Type	Part Type	Vehicle Type	Part Type	Vehicle Type	Part Type	Vehicle Type	Part Type	
	113	001	LG221	039	U223	077	DP410-L	115	VL520	153	DP411-MTK	194
	L113	002	P211	040	UL223	078	P410-U	116	B20('68)	154	PL411-UTK	195
	123	003	310	041	M223	079	P410-N	117	LB20ST('68)	155	WP411	196
	AV123	004	L310	042	311	080	DP410-M	118	DP410-R	156	VP411	197
	L123	005	U222	043	P311	081	DP410-N	119	R411	158	WPL411	198
	U123	006	P310	044	WP311-U	082	DP410-LN	120	R411UTK('66.5)	159	A221	199
	V123	007	WPL310	045	PL311-U	083	PL410-N	121	RL411UTK('66.5)	160	GA221	200
	114	008	VG222	046	WPL311-U	084	SP310	122	RL411	161	DP411-A	202
	124	009	SPL212	047	A120	085	SPL310-U	123	CSP311	163	B10-DA	203
	U124	010	V222	048	SPL213	086	P410-UT	124	P411	165	G520-S	204
	V124	011	VG221	049	320	087	PL410-UT	125	DP411	166	520S	205
	AV124	012	222	050	L320	088	A220	126	DP411-MTK	167	520('67)	205
	210	013	G222	051	VA120	089	VA220	127	P411-P	168	L520('67)	206
	L210	014	LG222	052	U320	090	KA220	128	P411-UT	169	U520-S	207
	220	015	L222	053	V320	091	SP310('65)	129	PL411-U	170	U520('67)	207
	L220	016	126	054	UL320-U	092	SPL310('65)	130	PL411-UT	171	V520S	208
	U220	017	W211	055	VL320-U	093	A220-H	131	P411-UTK	172	V520('67)	208
	AV220	018	WP211	056	320	094	P410('65)	132	PL411-UTK	173	B10T	209
	V220	019	WPL211	057	P312	095	PL410('65)	133	WP411	174	510-S	210
	M113	020	VA20	058	PL312	096	WP410('65)	134	WPL411-U	175	510-UT	211
	ML113	021	PG221	059	WP312	097	WPL410('65)	135	P411-N	176	510SA('68)	212
	W113	022	PLG221	060	WPL312	098	DP410('65)	136	411	177	510-U	213
	M114	023	VP221	061	A121	099	DP410-L('65)	137	DP411-L	178	L510	214
	M210	024	VPL221	062	AL121	100	P410-U('65)	138	P411-R	179	L510-T	215
	W210	025	UP221	063	N320	101	PL410-U('65)	139	B10	180	510	216
	G220	026	UPL221	064	Y312	102	DP410-M('65)	140	VB10	181	510-T	217
	211	027	PG222	065	NL320-U	103	DP410-N	141	B10-D	182	510-A	218
	221	028	PLG222	066	SP310	104	DP410-LM	142	VB10-D	183	P510	219
	G221	029	VP222	067	SPL310	105	P410-UT	143	P411	184	P510-TK	220
	L211	030	VPL222	068	P410	106	PL410-UT	144	DP411	185	510-P	221
	L221	031	UP222	069	410	107	P410-P	145	DP411-L	186	R510-S	222
	A20	032	UPL222	070	PL410	108	SP311	146	PL411-U	187	R510	223
	115	033	WP310	071	WP410	109	SPL311	147	DR411	188	R510STK('68)	224
	125	034	223	072	WPL410	110	520	148	RL411-UTK	189	W510	225
	LG220	035	G223	073	P410R	111	L520	149	P411-P	190	W510-A	226
	U221	036	LG223	074	A122	112	U520	150	P411-U	191	WP510-UT	227
	V221	037	VG223	075	VA122	113	UL520	151	P411-R	192	WL510	228
	S221	038	VLG223	076	DP410	114	V520	152	DP411-R	193	V510	229

Vehicle Type	Part Type	Vehicle Type	Part Type	Vehicle Type	Part Type	Vehicle Type	Part Type	Vehicle Type	Part Type	Vehicle Type	Part Type
PL510	230	KP510TK('69)	267	LGC10T	A04	WNL510TX('69)	A43	KGC10T('71)	A82	UA320('70)	B23
PL510UT	231	P510UTK('68)	268	PLGC10T	A05	510('69.5)	A44	KGC10AT('71)	A83	GKA320('70)	B24
PL510UA	232	PL510TK('68)	269	(P)510SU('69)	A06	SPL311('69.5)	A45	HGC10AT('71)	A84	VT641B('69)	B26
WPL510-U	233	L510UTK('68)	271	510P	A07	P510('70)	A46	PL510AU	A85	BT641('69)	B27
WPL510-UT	234	L510UX('68,'70)	272	510('69)	A08	R510('70)	A47	510S('71)	A86	T641M('69)	B28
WPL51-UA('68)	235	WPL510UTX('68,'70)	273	510(S)T('69)	A09	P510P('70)	A48	H510TK('71)	A87	NL521T('69)	B29
L510A('68)	236	(W)P411U(T)('67)	274	R510A('69)	A10	P510S('70)	A49	510P('71)	A88	N521('70.5)	B30
P510U('68)	237	(W)PL411U(T)('67)	275	P510UTK('69)	A11	P510A('70)	A50	510('71)	A89	NL521T('70.5)	B31
P510UA('68)	238	B10('68)	277	R510S('69)	A13	P510TK('70)	A51	510H('71)	A90	GN521('70.5)	B32
R510T('68)	239	VB10('68)	278	R510('69)	A14	KP510TK('70)	A52	510HT('71)	A91	UN521('70.5)	B33
P411('67)	240	55Z520	279	R510ST('69)	A15	WP510('70)	A53	510HA('71)	A92	521(J13)('70.5)	B34
DP411('67)	241	520U,520AU	280	WP510U('69)	A16	PL510('70)	A54	R510('71)	A93	JATOCO	B35
DP411L('67)	242	520EU('68)	280	WP510UA('69)	A17	PL510TU('70)	A55	KH510TK('71)	A94	NL521('70.5)	B36
D411R('67)	243	G520S('68)	281	V510S('69)	A18	PL510AU('70)	A56	V510('71)	A95	GNL521('70.5)	B37
DP411R('67)	244	L520('68)	282	V(P)510('69)	A19	WP510A('70)	A57	L510('71)	A96	UNL521('70.5)	B38
RL411-UAK	245	U520('68)	283	(P)510U(A)('69)	A20	WPL510('70)	A58	L510SX('71)	A97	A321	B39
WRL411UTK('67)	246	V520('68)	284	P510(S)UT('69)	A21	WPL510TU('70)	A59	521X('69)	B01	PA321	B40
WRL411UAK('67)	247	C10M('68)	285	(P)L510S('69)	A22	PL510TK('70)	A60	G521SA('69)	B02	SA321S	B41
B10SF	248	C10U('68)	286	(P)L510('69)	A23	PC10M('70)	A61	L(G)521('69)	B03	VA321S	B42
LB10U('67)	249	C10MA('68)	287	(P)L510T(K)('69)	A24	PC10MA('70)	A62	L521TUH('69)	B04	BPA321S	B43
PL411UX	250	C10Y('68)	288	PL510A('69)	A25	PC10MT('70)	A63	UL521('69)	B05	N521T	B44
(L)B10-F(U)('68)	251	C10P('68)	289	PL510UT('69)	A26	WPC10M('70)	A64	V(L)521U('69)	B06	GN521T	B45
L520UX	252	LC10('68)	290	PL510UA('69)	A27	VPC10M('70)	A65	GA320	B07	PL521TU	B46
PL411UTK	253	VC10M('68)	291	WP510UT('69)	A28	PLC10M('70)	A66	A320	B08	PL521TU	B47
WPL411UTK	254	VC10S('68)	292	WPL510T('69)	A29	WPLC10('70)	A67	VA320	B09	620('72)	B50
SR333	255	WC10MU('68)	293	WPL510UT('69)	A30	C10S('70)	A68	RA320	B10	620U('72)	B51
SRL311('67.5)	256	WLC10M('68)	294	RPL510SUT('69)	A31	C10('70)	A69	T641('69)	B11	L620('72)	B52
KB10S('68)	257	QC10U('68)	295	SPL311('69)	A32	VC10S('70)	A70	LT641('69)	B12	G620('72)	B53
KB10	258	C10MUT('68)	296	SPL311('69)	A33	HGC10T('70)	A71	T641G('69)	B13	GNL620('72)	B54
SR311U('68)	259	LC10MT('68)	297	P510P('69)	A34	PGC10T('70)	A72	VT641U('69)	B14	PL620TU('72)	B55
SRL311('68)	260	W(L)C10MU(T)('68)	298	P510('69)	A35	C10SU('70)	A73	YT641('69)	B15	UN620('72)	B56
D510-T	261	S570T	299	P510A('69)	A36	SR311('70)	A74	DA320	B16	U620U('72)	B57
V510-S	262	LB10('67)	657	WP510	A37	SR311U('70)	A75	DVA320	B17	UL620('72)	B58
B10ST('67.5)	263	ALB10	658	NL510TX('69)	A38	SPL311U('70)	A77	UA320	B18	620(J13)('72)	B59
B10ST,B10SAF	264	QB10	659	C10A('69)	A39	SRL311U('70)	A78	VA320P	B19	VE20SU('73)	B60
B10STF('67.5)	264	GC10T	A01	R510A('69)	A40	KP510AT('70)	A79	PL521TU	B20	GKE20SU('73)	B61
K510('68)	265	PGC10T	A02	P510A('69)	A41	KPC10T('70)	A80	A320('70)	B21	USE20('73)	B62
KP510T('69)	266	GC10A	A03	WP510A('69)	A42	KPC10AT('71)	A81	KA320('70)	B22	KSE20AU('73)	B63

Vehicle Type	Part Type	Vehicle Type	Part Type	Vehicle Type	Part Type	Vehicle Type	Part Type	Vehicle Type	Part Type	Vehicle Type	Part Type
PL620TU(73)	B64	KB110(70.5)	H18	KB210GK	H57	HL710TU	K24	WP510A(71)	N06	PC110SU(A)(T)	R40
PL620KTU(73)	B65	KB110U(70.5)	H19	PB210T	H58	KHL710TU	K25	PL510(71)	N07	P(L)C110S(A)(T)	R41
VN620(73)	B66	B110GT(70.5)	H20	PB210GT	H59	PL710TQ	K26	PL510TK(71)	N08	VP(L)C110U	R43
VN620F(73)	B67	B110GTR(70.5)	H21	PB210GTK	H60	P710STU	K27	PL510TU(71)	N09	HGC110UT	R50
VE20U(73)	B68	KB110G(70.5)	H22	LB210T	H61	V710S(74)	K28	WPL510(71)	N10	KHGC110UT	R52
GKE20U(73)	B69	B110GTK(70.5)	H23	LB210TRU	H62	V710(74)	K29	WPL510TU(71)	N11	(K)HLGC110(A)T	R53
PL620TU(74)	B79	KB110GK(70.5)	H24	KLB210	H63	WP710HT(74)	K30	JN510SU(71.5)	N12	KHGC110UAT	R54
TB20S(69)	G01	KPB110(71)	H25	B210	H64	WP710TU(74)	K31	JN510P(71.5)	N13	610(72)	U01
(L)TB20STU(69)	G02	KPB110G(71)	H26	VB210S	H65	WHL710TU(74)	K32	H510TB(71)	N14	610T(72)	U02
C20(70)	G03	KPB110GR(71)	H27	VB210	H66	WNL710TX(74)	K33	KH510TB(71)	N15	610A(72)	U03
C20H(70)	G04	PB110T(71)	H28	VB210SR	H67	WPL710TQ(74)	K34	P510(71.5)	N16	610ATU(72)	U04
VC20(70)	G05	PB110GT(71)	H29	VLB210ST	H68	PL710P(74)	K35	P510T(71.5)	N17	610H(72)	U05
KC20(70)	G06	PB110GTK(71)	H30	KLB210U	H69	E10(71)	M01	P510T(71.5)	N18	P610(72)	U06
C20(72)	G07	B110S(72)	H31	LB110TRU(73)	H70	E10RT(71)	M02	JNL510(71.5)	N19	P610H(72)	U07
C20	G08	B110	H32	KLB110U(73)	H71	E10T(71)	M03	P510TK(71.5)	N20	P610TK(72)	U08
VC20	G09	B110GT	H33	710	K01	E10SR(71)	M04	N510S(71.5)	N21	K610(72)	U10
B120S(71)	G10	B110GTR	H34	710T	K02	VE10SR(71)	M05	PL510TU(71.5)	N22	KP610HT(72)	U11
B120ST(71)	G11	LB110	H35	710HT	K03	VE10R(71)	M06	RPL510STU(71.5)	N23	KP610(A)TKU(72)	U12
B120STU(71)	G12	B110SR	H36	710TK	K04	VE10RT(71)	M07	VN510(71.5)	N24	WP610H(A)T(72)	U13
LB120ST(71)	G13	B110R	H37	710S	K05	PE10T(71)	M08	PL510P(71.5)	N25	V610(72)	U14
GB120S	G14	B110GTR	H38	710Y	K06	E10TU(71)	M09	PL510P(72)	N26	J610U(72)	U15
VC20JS	G15	LB110TRU	H39	710P	K07	LE10T(71)	M10	PL510ATU(72)	N27	W610(A)TU(72)	U16
VC20JS	G20	KB110	H40	P710AT	K08	KPE10TK(71)	M11	RPL510ST	N28	JL610(72)	U17
B10(69)	H01	KB110G	H41	P710TE	K09	E10H(R)T(71)	M12	JPL510P	N29	JL610(S)T(72)	U18
B10F(69)	H02	KB110GR	H42	710SR	K10	KE10T(71)	M14	ML510ATX	N49	KPL610(A)T(72)	U19
KB10(69)	H03	VB110S	H43	710R	K11	KPE10HT(71)	M15	C10(71)	R01	L610TU(72)	U20
VB10(69)	H04	VB110	H44	P710HRT	K12	51ZVLE10	M16	C10S(71)	R03	L610AU(72)	U21
(L)B10-(U)(69)	H05	VB110SR	H45	K710	K13	52ZLE10	M17	PLC10M(71)	R04	(P)L610ATU(72)	U22
(L)B10-F(U)(69)	H06	LB110TRU	H46	KP710TK	K14	53ZVLE10	M18	C10SU(71)	R05	KL610(A)TU(72)	U23
V(L)B10-(U)(69)	H07	KLB110U	H47	KP710TE	K15	54ZVLE10	M19	LC10S(71)	R06	VL610ST(72)	U24
B110S(70.5)	H10	B110	H48	710U	K16	KPE10UT(73)	M20	VC10S(71)	R07	W(P)L610(72)	U25
B110(70.5)	H11	B210STKU	H50	L710	K17	LKPE10T(73)	M21	WPC10MT(71)	R08	KL610STU(72)	U26
B110SR(70.5)	H12	B210GT	H51	PL710Y	K18	KPE10ST(74)	M22	WP(L)C10U(71)	R09	KP610TE(72)	U27
B110R(70.5)	H13	B210GTK	H52	PL710TK	K19	P510S(71)	N01	GC10T(71)	R10	610(A)TK(72)	U28
VB110S(70.5)	H14	B210R	H53	NL710TX	K20	P510(71)	N02	KPGC10(71)	R11	K610(A)TK(72)	U29
VB110(70.5)	H15	B210GTR	H54	KPL710T	K21	P510A(71)	N03	GLC10(71)	R12	P610STU(72)	U30
LB110ST(70.5)	H16	KB210	H55	P710FK	K22	P510TK(71)	N04	(P)C10HT(72)	R13	P610SATU(72)	U31
LB110T(70.5)	H17	KB210G	H56	KP710GFK	K23	KP510TK(71)	N05	KGC10TK(72)	R14	JNL610X(72)	U32

		Medium Type Part									
Vehicle Type	Part Type	Vehicle Type	Part Type	Vehicle Type	Part Type	Vehicle Type	Part Type	Vehicle Type	Part Type	Vehicle Type	Part Type
WN1610TX('72)	U33	B130	300	FRB140	338	LH31	378	"I"H20	677	WP31('65)	717
610('73)	U39	B40	301	FB140	339	H31-U	379	A30S	680	TH31	718
610H('73)	U40	LB40	302	VB133	340	G31-U	380	A30Y	681	TH31('65)	719
P610TK('73)	U41	UB40	303	GB140	341	H31-J	381	PA30	682	LH31-U('65)	720
P610TE('73)	U42	VB40	304	G30	342	H31-M	382	PA30A	683	LG31-U('65)	721
K610('73)	U43	C40	305	LB140	343	G31S	383	VA30S	684	LG31S-U('65)	722
K610HT('73)	U44	L520	306	KC140	344	V40	384	VPA30	685	VP31-UK('65)	723
K610TK('73)	U45	VC40	307	TG30	345	QLC141	385	PLA30U	686	WPL31-U('65)	724
L610T('73)	U46	B131	308	LC140	346	QL40	386	WPLA30U	687	TLH31-U('65)	725
KPL610T('73)	U47	B41	309	L30	347	H31('64)	387	HA30W	688	H31T('65)	726
V610('73)	U48	VB41	310	KLG140	348	G31('64)	388	WHA30UA	689	G31SY-P('65)	727
WP610HT('73)	U49	NB131	311	WP30	349	G31S('64)	389	H130('68)	690	G31SY-P('64)	728
WL610T('73)	U50	DB131	312	40	350	31('64)	390	P130-UK('68)	691	31Y-P('64)	729
610('74)	U51	B42	313	L40	351	VP31-K('64)	391	130-SU('68)	692	P130	730
HL610TU('74)	U52	C42	314	C141	352	WP31('64)	392	HL130-U('68)	693	P130S	731
610HT('74)	U53	NB42	315	GC140	355	VC141	393	PL130-UK('68)	694	VP130	732
P610TK('74)	U54	VC42	316	30U	356	VC141N	394	L130-SU('68)	695	V130	732
P610TE('74)	U55	B132	317	P30-U	357	KC141	395	VP130-U('68)	696	WP130	733
K610('74)	U56	510A	318	LC141	358	GQC141	396	V130-U('68)	696	W130	733
K610HT('74)	U57	WL510UTX	319	GLC140	359	KLC141	397	WP130-U('68)	697	H130	734
K610TK('74)	U58	VB132	320	F40	360	GLC141	398	W130-U('68)	697	Q130	735
L610T('74)	U59	FPB42	321	FR40	361	DC141	399	LH31('64)	700	130S	736
KHL610TU('74)	U60	30	322	VC141	362	GHC141	621	LG31('64)	701	130	736
KPL610T('74)	U61	C43	323	VNC141	363	GQC141	629	LG31S('64)	702	130-A	737
V610('74)	U62	VC43	324	KC141	364	HC141	636	L31('64)	703	P130-A	737
WP610HT('74)	U63	FRB42	325	GC141	365	QHC141	637	VPL31('64)	704	130P('66)	738
WL610T('74)	U64	D30	326	VP30	366	A30	661	WPL31('64)	705	130-P	739
WHL610TU('74)	U65	V30	327	H31	367	A30	662	H31-M('64)	706	41	740
PL610TQ('74)	U66	WL510	328	G31	368	A30	663	H31-JD('64)	707	C142	741
		V510	329	P31	369	A30	664	H31-U('64)	708	F41	742
		KC43	330	31	370	Y130	667	LG31-UM('64)	709	L41	743
		B140	331	VP31	371	PHC240	669	40T	710	LC142	744
		NB140	332	WP31	372	"C"H20	671	Q40T	711	N41	745
		C140	333	GLC141	373	"D"H20	672	H31('65)	712	LN41('66)	746
		WPL510UT	334	DP30	374	"E"H20	673	G31('65)	713	41('67)	747
		L30	335	LG141	375	"F"H20	674	G31S('65)	714	L41('67)	748
		VC140	336	GLC140	376	"G"H20	675	31('65)	715	Q41('67)	749
		VNC140	337	Q41	377	"H"H20	676	VP31K('65)	716	PL130('66)	750

Vehicle Type	Part Type	Vehicle Type	Part Type	Vehicle Type	Part Type	Vehicle Type	Part Type	Vehicle Type	Part Type	Vehicle Type	Part Type
PL130S('66)	751	VP130-U('67)	780	WU657AE	854	Y130('69)	E10	130('69.5)	E49	HLS30U	ERR
VPL130('66)	752	VPL130-U('67)	780	LT65('69)	855	HL130('69)	E11	A30S('70)	E50	C30('72)	E89
WPL130('66)	753	H130-U('67)	781	LGT65A('69)	856	PL130('69)	E12	VA30('70)	E51	S30('73)	E97
HL130('66)	754	130-SU('67)	782	LWU656AE	857	PL130-S('69)	E13	HA30('70)	E52	RS30('73)	E98
H130	755	Q130-U('67)	782	KLT65UD('69)	858	VPL130('69)	E14	HA30A('70)	E53	RS30E	E99
QL130('67.5)	755	W130-U('67)	782	LWU657AE	859	WPL130('69)	E15	HA30Q('70)	E54	140('71)	J01
PL130SA('66)	756	WL130-U('67)	782	QT65	860	HL130V	E16	HA30QA('70)	E55	Q140	J02
FR41('67)	756	V130U('67)	782	QGT65A	861	G130('69)	E17	VHA30('70)	E56	N140('71)	J03
H130V	757	VL130-U('67)	782	WT653L	862	GL130('69)	E18	HA30U('70)	E57	140G('71)	J04
QL130-L('68)	759	PL130-U('67)	783	LWU653AE	863	QL130('69)	E19	WHLA30('70)	E58	140U('71)	J05
C240	760	L130-SU	784	T43,T44	864	C30SU('69)	E20	C30S('70)	E60	L140('71)	J06
C240-H	760	C30-SU	785	LT53N,LT44NT	865	C30SUT('69)	E21	C30('70)	E61	QL140('71)	J07
LC240('67)	761	C30-SUT	786	QT43NU	866	C30SUT('69)	E22	C30AT('70)	E62	GHC240	J10
QC240	762	C30-UT	786	NT43,NT44	867	C30U('69)	E23	LC30S('70)	E63	GC240	J11
QC240-H	762	C30-SUA	787	LNT43,LNT44	868	C30T('69)	E24	LC30('70)	E64	GHLC240	J12
QLC240('67)	763	C30-UA	787	(L)T65HU	869	LC30('69)	E25	LC30TU('70)	E65	GLC240	J13
HC240	764	C30-U	788	KQT65	870	LC30T('69)	E26	KC30T('70.5)	E66	C240('72)	J14
HQC240	764	LC30-S	789	DT65	871	LC30A('69)	E27	KC30ATU('70.5)	E67	HC240('72)	J15
PHC249('67)	765	LC30	789	ET65	872	LC30SUT('69)	E28	KPC30TK('70.5)	E68	YC240('73)	J20
PHQC240('67)	766	LC30-ST	790	T44M	873	H130V('70)	E30	KPLC30T('70.5)	E69	HYC240('73)	J21
VC240	767	LC30-T	790	T641('69)	B11	G130U('70)	E31	KPLC30TU('70.5)	E70	QC240('73)	J22
KC240	767	LC30-UT	790	LT641('69)	B12	H130('70)	E32	KPLC30ATU('70.5)	E71	QLC240('73)	J23
DC240	768	LC30-SA	791	T641G('69)	B13	GL130('70)	E33	PS30S('70)	E72	C240('73)	J24
DQC240	768	LC30-A	791	VT641U('69)	B14	130SU('70)	E34	C30S('71)	E73	HC240('73)	J25
KLC240('67)	769	LC30-UA	791	YT641('69)	B15	WH130('70)	E35	C30('71)	E74	LC240('73)	J26
GC240	770	DC30T('68)	792	VT641B('69)	B26	HL130V('70)	E36	C30H('71)	E75	GC240('73)	J27
GQC240	770	C240W	821	BT641('69)	B27	L130S('70)	E37	LC30S('71)	E76	GYC240('73)	J28
GHQLC240('67)	771	HC240W	822	T641M('69)	B28	WHL130('70)	E38	LC30('71)	E77	C240P('73)	J29
GHC240	772	GLC240W	823	JATOCO	B35	G130UX('70)	E39	LC30TU('71)	E78	YC240W('73)	J30
GHQC240	772	GHLC240W	824	H130('69)	E01	C30SA('69.5)	E40	S30A('71)	E79	EYC240WA('73)	J31
V130	774	LC240W	825	P130('69)	E02	S30('70)	E41	HLS30ATU('71)	E80	HEYC240W('73)	J32
H130A('67.5)	775	41	847	P130-S('69)	E03	PS30('70)	E42	HLS30E('71)	E81	QC240W('73)	J33
H130A('67.5)	776	L41	848	VP130('69)	E04	HS30U('70)	E43	S30('71)	E82	HQC240W('73)	J34
Y130	777	Q41	849	WP130('69)	E05	HLS30('70)	E44	HLS30U('71)	E83	QLC240W('73)	J35
Y130('67.5)	778	T65U('67)	850	H130V('69)	E06	HS30US('70)	E45	HLS30('71)	E84	C240W('73)	J36
HY30('67)	779	GT65UA('67)	851	130-S('69)	E07	HLS30U('70)	E46	C30A	E85	HC240W('73)	J37
P130-U('67)	780	WT656N	852	130P('69)	E08	HLS30UA('70)	E47	S30A	E86	LC240W('73)	J38
WPL130-U('67)	780	KT65UD('67)	853	Q130('69)	E09	C30('69.5)	E48	S30('72)	E87	DC240W('73)	J39

								Large Type Part			
Vehicle Type	Part Type	Vehicle Type	Part Type	Vehicle Type	Part Type	Vehicle Type	Part Type	Vehicle Type	Part Type	Vehicle Type	Part Type
DQC240W('73)	J40	PL230V-A('71)	P29	C110P('73)	R36	NC130T('72)	S22	580	500	LG591	538
DYC240W('73)	J41	H230H('71)	P30	C110HT('73)	R37	NC130TK('72)	S23	N580	501	U591	539
DEYC240W('73)	J42	230VP('71)	P31	PC110AT('73)	R38	KNC130HT('72)	S24	S580	502	UG591	540
C240W('73)	J43	KHF230H('72)	P32	PC110UT('73)	R40	NC130AT('72)	S25	L580	503	UL591	541
VC240('73)	J44	KHF230HT-A('72)	P33	PLC110T('73)	R41	PLC130M('74)	S26	F580	504	UGL591	542
GC240W('73)	J45	KHF230HT-G('72)	P34	KPC110T('73)	R42	MC130T('74)	S27	U580	505	M591	543
GQLC240W('73)	J46	KF230VT-G('72)	P35	VC110T('73)	R43	MC130AT('74)	S28	UL580	506	ML591	544
GHC240W('73)	J47	KF230HK('72)	P36	VC110S('73)	R44	KMC130T('74)	S29	M580	507	MG591	545
GHQLC240('73)	J48	KF230V('72)	P37	WPC110T('73)	R45	T20('73)	T01	ML580	508	MGL591	546
JC240('73)	J49	KHF230HK('72)	P38	KGC110T('73)	R46	LT20('73)	T02	590	509	701	547
S30('73)	N30	230HK-G('71)	P40	KGC110TK('73)	R47	T20R('73)	T03	G590	510	F591	548
RS30('73)	N31	V230-G('71)	P41	KNGC110T('73)	R48	T20G('73)	T04	DG590	511	UR591	549
RS30E('73)	N32	K230HTK-G('71)	P42	KC110T('73)	R49	T20P('73)	T05	L590	512	NR591	550
HCS30UN('73)	N33	P230VT('71)	P43	GC110T('73)	R50	VT20('73)	T06	LG590	513	582	551
230H('71)	P01	230HK('73)	P44	GC110AT('73)	R51	HT20Q('73)	T07	U590	514	L582	552
230V('71)	P02	230H('73)	P45	GC110T('73)	R52	LHT20G('73)	T08	DUG590	515	U582	553
230Q('71)	P03	230V('73)	P46	HLGC110T('73)	R53	T40('73)	T10	UG590	516	M582	554
N230S('71)	P05	230Q('73)	P47	KHGC110UA('73)	R54	LT40('73)	T11	M590	517	592	555
N230P('71)	P06	230S('73)	P48	KPGC110T('73)	R55	T40R('73)	T12	MG590	518	G592	556
Q230U('71)	P07	230HTK('73)	P49	PC130T('72)	S01	YT40('73)	T13	DMG590	519	U592	557
V(P)(L)230U('71)	P08	H230HK('73)	P50	C130T('72)	S02	T40H('73)	T14	ML590	520	S592	558
VN230S('71)	P09	N230S('73)	P51	PC130H('72)	S03	HT40A('73)	T16	MLG590	521	M592	559
W(P)(L)230U('71)	P10	P230VU('73)	P52	HC130T('72)	S04	YHT40A('73)	T17	UL590	522	UG592	560
Y230T('71)	P11	PL230V('73)	P53	C130Q('72)	S05	GHT40C('73)	T18	LS580	523	MG592	561
P230VU('71)	P14	Y230T('73)	P54	KPC130T('72)	S06	WT40H('73)	T20	E590	524	702	566
P(L)230QU('71)	P15	230G('73)	P55	KPC130HT('72)	S07	YWT40H('73)	T21	UR590	525	ULG680	567
N230SU('71)	P16	K230HTK('73)	P56	KPC130TK('72)	S08	YSWT40GA('73)	T22	581	526	ML582	568
PL230V('71)	P17	KH230HTK('73)	P57	KHC130TK('72)	S09	HWT40A('73)	T23	L581	527	UL582	569
NL230S('71)	P18	KHL230QT('73)	P58	PC130AT('72)	S10	YHWT40GA('73)	T24	S581	528	UL582	570
K230HTK('71)	P20	W230('73)	P59	KHC130T	S12	GHWT40C('73)	T25	N581	529	F582	571
K(P)230QTU('71)	P21	V230('73)	P60	C130HT	S14	DWT40A('73)	T26	U581	530	LF582	572
KH230HT('71)	P22	WH230U('73)	P61	C130AT	S15	T40('73)	T27	UL581	531	F581	573
KPL230QT('71)	P23	C110T('73)	R30	KC130T	S16	T40('73)	T28	M581	532	F592	574
P230VU-A('71)	P24	C110('73)	R31	KC130HT	S17			ML581	533	ME592	575
NL230VX('71)	P25	C110ST('73)	R32	HC130AT	S18			LS581	534	L592	576
WPL230T('71)	P26	PC110T('73)	R33	KC130QT	S19			591	535	LG592	577
PL230VT-A('71)	P27	PC110HT('73)	R34	PC130UT	S20			L591	536	LS582	578
P(L)230VTU('71)	P28	C110A('73)	R35	PLC130T	S21			G591	537	GU582	579

											Special Type Part		
Vehicle Type	Part Type	Vehicle Type	Part Type	Vehicle Type	Part Type	Vehicle Type	Part Type	Vehicle Type	Part Type	Vehicle Type	Part Type	Vehicle Type	Part Type
	680	580	SC80-N	618		60	670	UD780	C15	HL150('71)	F12	4W61	400
	8680	581	QLC80('66)	619		681	800	LG780	C16	150('72)	F13	B4W61	401
	M680	582	LC80	620		U681	801	ULG780	C17	150('72)	F14	F4W61	402
	U680	583	GC141	621		681-N	802	L780N	C18	H150U('72)	F15	L4W61	403
	F680	584	50('65)	622		U681-N	803	UL780N	C19	HL150('72)	F16	R4W61	404
	L680	585	T50JD('65)	624		G681	804	LS780	C20	H250D('74)	F17	2W71	405
	ML680	586	C80	625		UG681	805	FL780	C21	250('74)	F18	4W71	406
	UL680	587	LHC80	626		S681	806	FLS780	C22	HL250('74)	F19	C4W71	407
	U690	588	L50	627		D681	807	DLR780	C23			F4W71	408
	UG690	589	T50	628		DU681	808	DUL780	C24			R4W71	409
	W582	590	GQC141	629		F681	809	DU780	C25			4W62	410
	G680	591	T50('65)	630		FS681	810	UL780	C26			B4W62	411
	MLE592	592	TL50	631		UG681T('66.5)	811	ULG780	C27			F4W62	412
	801	593	L50	632		LN681A('66.5)	812	UEG780	C28			4W62	413
	ULG582	594	ULE690	635		ULN681('66.5)	813	E790	C29			4W72	414
	UR690	595	HC141	636		LG681('66.5)	814	LE790	C30			C4W72	415
	E690	596	HQC141	637		ULG681('66.5)	815	ULE790	C31			R4W72	416
	ME690	597	ULEG690	638		LS681('66.5)	816	UR790	C32			4W63	417
	MG690	598	UEG681	640		DL681('66.5)	817	ULR790	C33			4W73	418
	LG680	599	D60W	641		DUL681('66.5)	818	ULEG790	C35			2W65	419
	FL680	600	K60	642		FL681('66.5)	819	UG780TE	C36			R2W65	420
	YLG680	601	60W	643		FLS681('66.5)	820	U780H	C37			4W65	421
	LF690	602	G60HW	644		JUR690	826	DU780H	C38			F4W65	422
	MLG690	603	QSC80('66)	645		E690	829	UE780	C39			G4W65	423
	ULR680	604	SC80	646		H150('68)	840	TU780U	C40			L4W65	424
	MLEG690	605	DQSC80-A	647		L150('68)	841	ULEG780	C41			R4W65	425
	UL690	606	DSC80-A	648		JATOCO	B35	A80	C53			D4W61	426
	ULG690	607	H150U('66)	650		780	C04	150('69)	F01			2W61	427
	UE680	608	LH150('66)	651		U780	C05	H150U('69)	F02			R2W61	428
	UG680	609	L60	652		G780	C06	HL150('69)	F03			R2W71	429
	50	610	LG60	653		UG780	C07	L150A('69)	F04			4W74	430
	50M	611	LG60H	654		N780	C08	150('69.5)	F05			4W75	431
	50	612	YLG60	655		UN780	C09	150('70)	F06			K4W72	432
	50M	613	KL60	656		S780	C10	L150('70)	F07			4W66	433
	50J('64)	614	150-A	660		F780	C11	H150U('70)	F08			F4W72	434
	QC80	615	150	660		FS780	C12	HL150('70)	F09			MR4W72	435
	QSC80-N	616	150	666		D780	C13	150U('71)	F10			L4W72	436
	C80	617	C80	668		L780	C14	H150U('71)	F11			L4W73	437

Vehicle Type	Part Type	Vehicle Type	Part Type	Vehicle Type	Part Type	Vehicle Type	Part Type	Vehicle Type	Part Type	Vehicle Type	Part Type
L4W66	438	CFG005U('68)	477	G60HU	C44						
4W73	439	BPU	478	VG60U	C45						
60	440	PU860	479	FG60HU	C46						
FLG4W66	441	FG2	480	4W73U	C47						
L60	442	FG2A	481	F4W73U	C48						
H60	443	FG005	482	FH60	C49						
LH60	444	D11PU	483	FH60U	C50						
G60	445	D11PU	484	VH60	C51						
LG60	446	DPU	485	VH60U	C52						
D4W73	447	DPUM	486	R4W71B	E90						
FH60	448	EPU	487	RS4W71B	E91						
F4W73	449	CPU	488	R4W71B	E92						
FL4W73	450	CPU	489	F4W71B	E93						
K60	451	FG007	490	F4C71B	E94						
KL60	452	H30PU	491	FS5C71B	E95						
WG60	453	H20PU	492	F5C71B	E96						
WLG60	454	BPU	493	PPU	K40						
VG60	455	PPU	494	J15PU41R	K41						
VLG60	456	HPU	495	J15PU42R	K42						
D60	457	GPU	496	FS5W63R	N90						
N60	458	GPU	497	F5W63A	N91						
DN60	459	PPU	498	FS5C63A	N92						
FLG60H	460	PPU	499	F5C63A	N93						
DL60	461	60N('67)	641								
N60('68)	462	K60('67)	642								
WG60('68)	463	60W('67)	643								
WLG60('68)	464	G60HW('67)	644								
60('68)	465	L60('67)	652								
G60('68)	466	LG60('67)	653								
G60H('68)	467	LG60H('67)	654								
FG60H('68)	468	VLG60('67)	655								
VG60('68)	469	KL60('67)	656								
FG1	470	JATOCO	B35								
FG1B	472	L60U('67.5)	C01								
FG1C	474	KL60U('67.5)	C02								
FG003	475	4W73	C03								
FG003U('67)	475	60U('69)	C42								
CFG003U('68)	476	G60U	C43								

Z.ONE.DATSUN

CONVERSION LIST

Length

	m. metre	c. metre	metre	k. metre	inch	foot	yard	mile	s. mile
m. metre	1	0.10000	0.00100		0.03937	0.00328	0.00109		
c. metre	10.0000	1	0.01000	0.00001	0.39371	0.03281	0.01094		
metre	1000.00	100.000	1	0.00100	39.3707	3.28089	1.09363	0.00062	0.00054
k. metre		100000	1000.00	1	39370.7	3280.89	1093.63	0.62138	0.53962
inch	25.3995	2.53995	0.02540	0.00003	1	0.08333	0.02778	0.00002	0.00001
foot	304.794	30.4794	0.30479	0.00030	12.0000	1	0.33333	0.00019	0.00016
yard	914.383	91.4383	0.91438	0.00091	36.0000	3.00000	1	0.00057	0.00049
mile		160931	1609.31	1.60931	63360.0	5280.00	1760.00	1	0.86842
s. mile		185315	1853.15	1.85315	72960.0	6080.00	2026.66	1.15151	1

Weight

	gram	k. gram	ton	s. ton	l. ton	ounce	pound
gram	1	0.00100				0.03527	0.00220
k. gram	1000.00	1	0.00100	0.00110	0.00098	35.2739	2.20462
ton		1000.00	1	1.10230	0.98421	35273.9	2204.62
s. ton	907185	907.185	0.90719	1	0.89286	32000.0	2000.00
l. ton		1016.04	1.01604	1.12000	1	35840.0	2240.00
ounce	28.3495	0.02835	0.00003	0.00003	0.00003	1	0.06250
pound	453.592	0.45359	0.00045	0.00050	0.00045	16.0000	1

Capacity

	cub. metre	litre	cub. inch	cub. foot	cub. yard	U.S. gallon	U.K. gallon
Cub. metre	1	1000.00	61027.1	35.3165	1.30802	264.186	220.216
litre	0.00100	1	61.0271	0.03532	0.00131	0.26419	0.22022
cub. inch	0.00002	0.01639	1	0.00058	0.00002	0.00433	0.00361
cub. foot	0.02832	28.3167	1728.00	1	0.03704	7.48051	6.23549
cub. yard	0.76455	764.554	46656.0	27.0000	1	201.974	168.358
U.S. gallon	0.00379	3.78543	231.000	0.13368	0.00495	1	0.83270
U.K. gallon	0.00455	4.54596	277.413	0.16037	0.00594	1.20091	1

Z.ONE.DATSUN

PART NAME	GROUP NO.	PART NAME	GROUP NO.
AXLE		PANEL flood (HARDTOP).....	214
AXLE front.....	131	PANEL hood (HARDTOP).....	207
AXLE rear (Rigid).....	133	PANEL instrument (HARDTOP).....	211
HUB rear axle shaft (For SSS).....	134	PANEL rear (HARDTOP).....	219
SUSPENSION front.....	132	PANEL roof (HARDTOP).....	213
SUSPENSION rear (Rigid).....	135	REGULATOR front door (HARDTOP).....	222
SUSPENSION rear (For SSS).....	136	RESTRAINT head (HARDTOP).....	229
TIRE.....	137	SEAT front (HARDTOP).....	227
WHEEL road.....	137	SLIDS front seat (HARDTOP).....	228
BODY (HARDTOP)		TOP cowl (HARDTOP).....	209
BELT seat (HARDTOP).....	230	TRIMMING body side (HARDTOP).....	218
Box console (HARDTOP).....	231	TRIMMING dash panel (HARDTOP).....	210
BUMPER (HARDTOP).....	225	TRIMMING floor (HARDTOP).....	215
BUMPER front (HARDTOP).....	206	TRIMMING front door (HARDTOP).....	223
CONTROL hood lock (HARDTOP).....	208	TRIMMING instrument panel (HARDTOP).....	211
DOOR front (HARDTOP).....	221	TRIMMING roof panel (HARDTOP).....	213
FENDER front (HARDTOP).....	207	WINDOW side (HARDTOP).....	224
FENDER rear (HARDTOP).....	219	BODY (SEDAN) Z.ONE.DATSUN	
FITTING body side (HARDTOP).....	217	BELT seat (SEDAN).....	201
FITTING flood panel (HARDTOP).....	214	BOX console (SEDAN).....	202
GLASS front window (HARDTOP).....	212	BUMPER front (SEDAN).....	166
GLASS rear window (HARDTOP).....	220	BUMPER rear (SEDAN).....	194
GRILLE radiator (HARDTOP).....	206	CONTROL hood control (SEDAN).....	168
LID trunk (HARDTOP).....	225	FENDER front (SEDAN).....	167
LOCK front door (HARDTOP).....	222	FENDER rear (SEDAN).....	182
MOULDING front window (HARDTOP).....	212	FITTING body side (SEDAN).....	178
MOULDING rear window (HARDTOP).....	220	FITTING floor panel (SEDAN).....	174
PANEL body side (HARDTOP).....	216	FRAME front seat (Bench type).....	196
PANEL dash (HARDTOP).....	210	GLASS rear window (SEDAN).....	184
		GRILLE radiator (SEDAN).....	166
		LID trunk (SEDAN).....	194

PART NAME	GROUP NO.
LAMP room.....	99
LAMP side flasher.....	96
METER instrument (STD & DX).....	84
MOTOR starter.....	80
RADIO.....	89
SWITCHES.....	83
UNIT electrical.....	83
WASHER windshield.....	92
WIPER windshield.....	91
WIRING (HARDTOP).....	82
WIRING (SEDAN).....	82

ENGINE

BLOCK cylinder (L14).....	3
BLOCK cylinder (L16).....	18
CAMSHAFT (L14).....	7
CARBURETOR (L14).....	10
CARBURETOR (Single) -AUTO- (L16).....	27
CARBURETOR (Single) -MANUAL- (L16).....	26
CARBURETOR (TWIN) (L16).....	28
CLEANER air (L14).....	12
CLEANER air (Single carburetor) -L16-.....	31
CLEANER air (Twin carburetor) -L16-.....	32
CONTROL throttler (L16).....	30
CRANKSHAFT (L14).....	6
CRANKSHAFT (L16).....	21
ENGINE assembly (L14).....	1
ENGINE assembly (L16).....	16
FAN cooling (L16).....	35
FITTING carburetor (L16).....	30
GASKET KIT engine (L14).....	2
GASKET KIT engine (L16).....	17

PART NAME	GROUP NO.
HEAD cylinder (L14).....	4
HEAD cylinder (L16).....	19
HOSE fuel (L14).....	13
HOSE fuel (L16).....	33
MANIFOLD (L14).....	8
MANIFOLD (SSS) -L16-.....	24
MANIFOLD (STD & DX) -L16-.....	23
MECHANISM valve (L14).....	7
PISTON (L14).....	6
PISTON (L16).....	21
PUMP fuel (L14).....	14
PUMP fuel (L16).....	34
PUMP oil (L14).....	9
PUMP oil (L16).....	25
PUMP water (L14).....	15
PUMP water (L16).....	35
STRAINER fuel (L14).....	13
STRAINER fuel (L16).....	33
VENTILATION crank case (L14).....	5
VENTILATION crank case (L16).....	20

ENGINE FITTING Z.ONE.DATSUN

ACCELERATOR.....	66
MOUNTING engine.....	68
MUFFLER (L14).....	61
MUFFLER (L16).....	61
MUFFLER (SSS).....	61
PIPING fuel (SSS).....	64
PIPING fuel (STD & DX).....	64
RADIATOR.....	67
TANK fuel (SSS).....	62
TANK fuel (STD & DX).....	62
TUBE exhaust (L14).....	61

PAGE NO. PART NAME GROUP NO.

TUBE exhaust (L16)..... 61
 TUBE exhaust (SSS)..... 61

MISCELLANEOUS

COOLANT -NISSAN- 240
 EMBLEM (HARDTOP)..... 237
 EMBLEM (SEDAN)..... 236
 KEY SET & BLANK KEY 238
 PAINT touch-up..... 241
 SEALER -NISSAN-..... 240
 TOOL kit 239

POWER TRAIN

BRAKE (AUTO) -3N71B-..... 120
 CASE transmission (AUTO) -3N71B-..... 118
 CASE transmission (3-SPEED)..... 109
 CASE transmission (4-SPEED)..... 110
 CASE transmission (5-SPEED)..... 111
 CLUTCH (AUTO) -3N71B-..... 120
 COVER clutch 102
 CYLINDER clutch master (NABCO)..... 103
 CYLINDER clutch master (TOKICO)..... 103
 CYLINDER clutch operating..... 105
 DEVICE transmission control (AUTO)..... 123
 DEVICE transmission control (3-SPEED)..... 122
 DISC clutch..... 102
 FINAL DRIVE assembly (SSS)..... 127
 FINAL DRIVE assembly (Rigid)..... 126
 FITTING transmission (AUTO) -3N71B-..... 118
 GEAR transmission (AUTO) -3N71B-..... 119

PAGE NO. PART NAME GROUP NO.

GEAR transmission (3-SPEED)..... 112
 GEAR transmission (4-SPEED)..... 113
 GEAR transmission (5-SPEED)..... 114
 PIPING clutch..... 107
 PUMP oil (AUTO) -3N71B- 120
 RELEASE parts 102
 SHAFT propeller (2-JOINT TYPE)..... 125
 SHAFT propeller (3-JOINT TYPE)..... 124
 SHIFTING transmission gear (3-SPEED)..... 115
 SHIFTING transmission gear (4-SPEED)..... 116
 SHIFTING transmission gear (5-SPEED)..... 117
 TRANSMISSION assembly (MANUAL)..... 108
 VALVE control (AUTO) -3N71B- 121

STEERING

COLUMN steering..... 157
 COLUMN steering (Impact absorbing type)..... 158
 COVER steering sheel 161
 GEAR steering 156
 LINKAGE steering..... 159
 WHEEL steering..... 160

Z.ONE.DATSUN

ILLUSTRATION INDEX

DESCRIPTION	PAGE NO.	DESCRIPTION	PAGE NO.
ENGINE L14			
ENGINE ASSEMBLY (L14).....	1-1	CARBURETOR (SINGLE) -AUTO- (L16)	27-1
ENGINE GASKET KIT (L14)	2-1	CARBURETOR FITTING & THROTTLER CONTROL (L16) ..	30-1
CYLINDER BLOCK (L14)	3-1	AIR CLEANER (FOR SINGLE CARBURETOR) -L16-	31-1
CYLINDER BLOCK (L14)	3-2	AIR CLEANER (FOR TWIN CARBURETOR) -L16-	32-1
CYLINDER HEAD (L14)	4-1	FUEL STRAINER & FUEL HOSE (L16)	33-1
CRANK CASE VENTILATION (L14)	5-1	FUEL PUMP (L16)	34-1
PISTON & CRANKSHAFT (L14).....	6-1	WATER PUMP & COOLING FAN (L16)	35-1
CAMSHAFT & VALVE MECHANISM (L14).....	7-1	ENGINE FITTING	
MANIFORD (L14)	8-1	EXHAUST TUBE & MUFFLER (WITH L14 ENGINE).....	61-1
OIL PUMP (L14)	9-1	EXHAUST TUBE & MUFFLER (WITH L16 ENGINE).....	61-2
CARBURETOR (L14)	10-1	EXHAUST TUBE & MUFFLER (FOR SSS).....	61-3
AIR CLEANER (L14)	12-1	FUEL TANK (STD & DX).....	62-1
FUEL STRAINER & FUEL HOSE (L14)	13-1	FUEL TANK (SSS)	62-2
FUEL PUMP (L14)	14-1	FUEL PIPING (STD & DX).....	64-1
WATER PUMP (L14)	15-1	FUEL PIPING (SSS)	64-2
ENGINE L16		ACCELERATOR	66-1
ENGINE ASSEMBLY (L16)	16-1	RADIATOR.....	67-1
ENGINE GASKET KIT (L16).....	17-1	ENGINE MOUNTING	68-1
CYLINDER BLOCK (L16)	18-1	ELECTRICAL	
CYLINDER BLOCK (L16)	18-2	Z.ONE.DATSUN	
CYLINDER HEAD (L16)	19-1	ELECTRICAL FITTING.....	70-1
CRANK CASE VENTILATION (L16)	20-1	DISTRIBUTOR (HITACHI)	71-1
PISTON & CRANKSHAFT (L16)	21-1	DISTRIBUTOR (MITSUBISHI)	72-1
CAMSHAFT & VALVE MECHANISM (L16)	22-1	ALTERNATOR (12V-35A) -HITACHI-	74-1
MANIFORD (STD & DX) -L16-	23-1	ALTERNATOR (12V-35A) -MITSUBISHI-	75-1
MANIFORD (SSS) -L16-	24-1	ALTERNATOR (12V-50A) -HITACHI-	76-1
OIL PUMP (L16)	25-1	ALTERNATOR (12V-50A) -MITSUBISHI-	77-1
CARBURETOR (SINGLE) -MANUAL- (L16)	26-1	ALTERNATOR (12V-60A) -HITACHI-	78-1
		ALTERNATOR (12V-60A) -MITSUBISHI-	79-1
		STARTER MOTOR	80-1

DESCRIPTION	PAGE NO.	DESCRIPTION	PAGE NO.
WIRING (SEDAN)	82-1	TRANSMISSION GEAR (5-SPEED)	114-1
WIRING (HARDTOP)	82-2	TRANSMISSION GEAR SHIFTING PARTS (3-SPEED)	115-1
ELECTRICAL UNIT	83-1	TRANSMISSION GEAR SHIFTING PARTS (4-SPEED)	116-1
SWITCHES	83-2	TRANSMISSION GEAR SHIFTING PARTS (5-SPEED)	117-1
INSTRUMENT METER (STD & DX)	84-1	TRANSMISSION CASE & FITTING	
CAR HEATER	88-1	PARTS (AUTOMATIC) -3N71B-	118-1
RADIO	89-1	TRANSMISSION GEAR (AUTOMATIC) -3N71B-	119-1
BATTERY	90-1	OIL PUMP CLUTCH & BRAKE (AUTOMATIC) -3N71B-	120-1
WINDSHIELD WIPER	91-1	CONTROLE VALVE (AUTOMATIC) -3N71B-	121-1
WINDSHIELD WASHER	92-1	TRANSMISSION CONTROL DEVICE (3-SPEED)	122-1
HEAD LAMP	93-1	TRANSMISSION CONTROL DEVICE (AUTOMATIC)	123-1
HEAD LAMP (FOR EUROPE)	94-1	PROPELLER SHAFT (3-JOINT TYPE)	124-1
HEAD LAMP (FOR SWEDEN)	94-2	PROPELLER SHAFT (2-JOINT TYPE)	125-1
FRONT COMBINATION LAMP	95-1	FINAL DRIVE ASSEMBLY & PARTS	
SIDE FLASHER LAMP	96-1	(FOR RIGID AXLE)	126-1
REAR COMBINATION LAMP (SEDAN)	97-1	FINAL DRIVE ASSEMBLY & PARTS (FOR SSS)	127-1
REAR COMBINATION LAMP (HARDTOP)	98-1		
ROOM LAMP	99-1		
LICENCE LAMP	100-1		
		AXLE	
		FRONT AXLE PARTS	131-1
		FRONT SUSPENSION	132-1
		REAR AXLE PARTS (RIGID AXLE)	133-1
		REAR AXLE SHAFT HUB PARTS (FOR SSS)	134-1
		REAR SUSPENSION (RIGID AXLE)	135-1
		REAR SUSPENSION (FOR SSS)	136-1
		ROAD WHEEL & TYPE	137-1
POWER TRAIN			
CLUTCH COVER, CLUTCH DISC & RELEASE PARTS	102-1		
CLUTCH MASTER CYLINDER (NABCO)	103-1		
CLUTCH MASTER CYLINDER (TOKICO)	104-1		
CLUTCH OPERATING CYLINDER (NABCO)	105-1		
CLUTCH PIPING PARTS	107-1		
TRANSMISSION ASSEMBLY (MANUAL)	108-1		
TRANSMISSION CASE (3-SPEED)	109-1		
TRANSMISSION CASE (4-SPEED)	110-1		
TRANSMISSION CASE (5-SPEED)	111-1		
TRANSMISSION GEAR (3-SPEED)	112-1		
TRANSMISSION GEAR (4-SPEED)	113-1		
		BRAKE	
		PARKING BRAKE (CENTER LEVER TYPE) -SSS-	140-1
		PARKING BRAKE (CENTER LEVER TYPE) -STD & DX-	141-1
		PARKING BRAKE (STICK TYPE)	142-1
		FRONT BRAKE (DISC TYPE)	143-1
		FRONT BRAKE (DRUM TYPE)	144-1

Z.ONE.DATSUN

DESCRIPTION	PAGE NO.
REAR BRAKE.....	145-1
BRAKE MASTER CYLINDER (TOKICO) -FOR DISC BRAKE-	146-1
BRAKE MASTER CYLINDER (NABCO) -FOR DISC BRAKE-	147-1
BRAKE MASTER CYLINDER (TOKICO) -FOR DRUM BRAKE-	148-1
BRAKE MASTER CYLINDER (NABCO) -FOR DRUM BRAKE-	149-1
BRAKE PIPING (STD & DX)	152-1
BRAKE PIPING (SSS)	152-2
MASTER VAC & HOSE.....	153-1
BRAKE & CLUTCH PEDAL.....	154-1
STEERING	
STEERING GEAR	156-1
STEERING COLUMN	157-1
STEERING COLUMN (IMPACT ABSORBING TYPE).....	158-1
STEERING LINKAGE	159-1
STEERING WHEEL	160-1
STEERING SHEEL COVER & LOCK.....	161-1
BODY (SEDAN)	
RADIATOR GRILLE & FRONT BUMPER (SEDAN)	166-1
FRONT FENDER, HOOD PANEL & FITTING (SEDAN)....	167-1
HOOD LOCK CONTROL (SEDAN).....	168-1
COWL TOP PARTS (SEDAN)	169-1
DASH PANEL PARTS & TRIMMING (SEDAN)	170-1
INSTRUMENT PANEL PARTS & TRIMMING (SEDAN)	171-1
FRONT WINDOW (SEDAN)	172-1
ROOF PANEL & TRIMMING (SEDAN)	173-1
FLOOR PANEL & FITTING (SEDAN).....	174-1

DESCRIPTION	PAGE NO.
FLOOR TRIMMING (SEDAN)	175-1
BODY SIDE PANEL (SEDAN).....	176-1
BODY SIDE FITTING (SEDAN).....	178-1
BODY SIDE TRIMMING PARTS (SEDAN)	180-1
REAR FENDER REAR PANEL FITTING (SEDAN).....	182-1
REAR WINDOW GLASS & MOULDING (SEDAN)	184-1
FRONT DOOR PANEL (SEDAN)	185-1
FRONT DOOR LOCK & REGULATOR (SEDAN)	187-1
FRONT DOOR TRIMMING (SEDAN).....	189-1
REAR DOOR PANEL (SEDAN)	191-1
REAR DOOR LOCK & REGULATOR (SEDAN).....	192-1
REAR DOOR TRIMMING (SEDAN)	193-1
TRUNK LID & REAR BUMPER (SEDAN)	194-1
FRONT SEAT (BENCH TYPE).....	195-1
FRONT SEAT FRAME PARTS (BENCH TYPE)	196-1
FRONT SEAT (SEDAN)	197-1
FRONT SEAT SLIDE PARTS (SEDAN)	198-1
REAR SEAT (SEDAN)	199-1
HEAD RESTRAINT (SEDAN)	200-1
SEAT BELT (SEDAN)	201-1
CONSOLE BOX (SEDAN).....	202-1
Z.ONE.DATSUN	
BODY (HARDTOP)	
RADIATOR GRILLE & FRONT BUMPER (HARDTOP)	206-1
FRONT FENDER, HOOD PANEL & FITTING (HARDTOP).....	207-1
HOOD LOCK CONTROL (HARDTOP).....	208-1
COWL TOP PARTS (HARDTOP).....	209-1
DASH PANEL PARTS & TRIMMING (HARDTOP)	210-1
INSTRUMENT PANEL PARTS & TRIMMING (HARDTOP).....	211-1
FRONT WINDOW GLASS & MOULDING (HARDTOP).....	212-1

DESCRIPTION	PAGE NO.	DESCRIPTION	PAGE NO.
ROOF PANEL & TRIMMING (HARDTOP).....	213-1		
FLOOR PANEL & FITTING (HARDTOP).....	214-1		
FLOOR TRIMMING (HARDTOP).....	215-1		
BODY SIDE PANEL (HARDTOP).....	216-1		
BODY SIDE FITTING (HARDTOP).....	217-1		
BODY SIDE TRIMMING PARTS (HARDTOP).....	218-1		
REAR FENDER REAR PANEL & FITTING (HARDTO).....	219-1		
REAR WINDOW GLASS & MOULDING (HARDTOP).....	220-1		
FRONT DOOR (HARDTOP).....	221-1		
FRONT DOOR LOCK & REGULATOR (HARDTOP).....	222-1		
FRONT DOOR TRIMMING (HARDTOP).....	223-1		
SIDE WINDOW PARTS (HARDTOP).....	224-1		
TRUNK LID & REAR BUMPER (HARDTOP).....	225-1		
FRONT SEAT (HARDTOP).....	226-1		
FRONT SEAT SLIDE PARTS (HARDTOP).....	227-1		
REAR SEAT (HARDTOP).....	228-1		
HEAD RESTRAINT (HARDTOP).....	229-1		
SEAT BELT (HARDTOP).....	230-1		
CONSOLE BOX (HARDTOP).....	231-1		
MISCELLANEOUS			
EMBLEM (SEDAN)	236-1		
EMBLEM (HARD TOP)	237-1		
KEY SET & BLANK KEY	238-1		
KEY SET & BLANK KEY	238-2		
TOOL KIT	239-1		
NISSAN COOLANT & SEALER	240-1		
TOUCH-UP PAINT	241-1		

Z.ONE.DATSUN