



JAPAN AUTOMOBILE FEDERATION

社団法人・日本自動車連盟

F. I. A. Recognition No. Group 1

5509

FEDERATION INTERNATIONALE DE L'AUTOMOBILE

Form of recognition in accordance with Appendix J to the International Sporting Code.

国際スポーツ法典付則J項及びJAF国内競技車両規則に従った公認書式。

Manufacturer 製造会社名 NISSAN MOTOR CO., LTD  
chassis 製造開始シャシー番号 GC110-000001  
Serial No of engine 製造開始エンジン番号 L20-436300  
Recognition is valid from 1.4.73

Cylinder-capacity 総排気量 { Reciprocation 1998 cm<sup>3</sup> 121.9 cu.in.  
レシプロ }  
Special 特殊 cm<sup>3</sup> cu.in.  
Model 型式及び通称名 GC110 (NISSAN SKYLINE 2000GT)  
Manufacturer NISSAN  
Manufacturer NISSAN  
List

The manufacturing of the model described in this recognition form was started on JUL. 1972 and the minimum production of 5,000 identical cars, in accordance with the specifications of this form was reached on DEC. 1972

Photograph A, 3/4 view of car from front 写真A、全体写真(斜め前方)



The vehicle described in this form has been subject to the following amendments :

Variants

on	19	rec. No.	List
on	19	rec. No.	List
on	19	rec. No.	List
on	19	rec. No.	List
on	19	rec. No.	List

Normal evolution of the type

on	19	rec. No.	List
on	19	rec. No.	List
on	19	rec. No.	List
on	19	rec. No.	List
on	19	rec. No.	List

Stamp and signature of the JAF  
JAF公認印及び署名

Stamp and signature of the F. I. A.

三井平八郎  
Heihachiro Mitsui



Make NISSAN

Model GC110  
型式

J.A.F.公認番号 T-203  
F.I.A. Rec. No. 5509

IMPORTANT - the underlined items must be stated in two measuring systems, one of which must be the metric system. See conversion table hereafter.

**CAPACITIES AND DIMENSIONS**

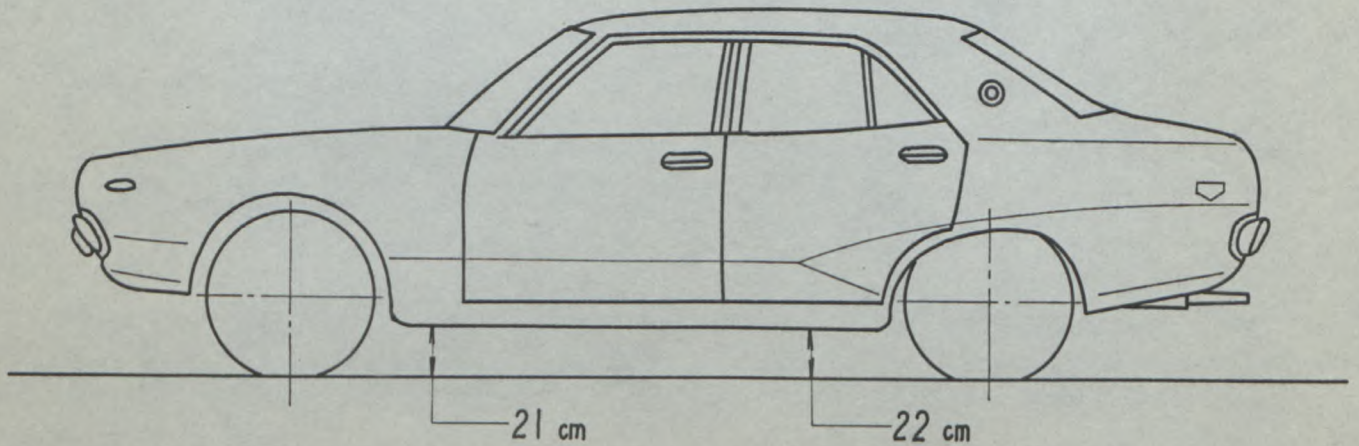
仕様諸元

1. <u>Wheelbase</u> ホイールベース	261.0	cm	102.8	inches
2. <u>Front track</u> トレッド(前)	135.0	cm	53.2	inches *
3. <u>Rear track</u> トレッド(後)	133.0	cm	52.4	inches *
4. Overall length of the car 全長	446.0	cm		inches
5. Overall width of the car 全幅	162.5	cm		inches
6. Overall height of the car 全高	139.5	cm		inches
7. Capacity of fuel tank (reserve included) 燃料タンク容量	14.5	Gallon US	55	ltrs Gallon Imp.
8. Seating capacity 定員	5			
9. <u>Weight</u> , total weight of the car with normal equipment, water, oil and spare wheel but without fuel nor repair tools. 車両重量 (冷却水、オイル、スペアタイヤを含む標準状態の車両重量、但し燃料、車載工具を除く)	1090	kg	2406	lbs cwt

\* Differences in track caused by the use of other wheels with different rim widths must be stated when recognition is requested for the wheels concerned.

Specify ground clearance in relation to the track and give drawing of two fixed points of the vehicle's structure at which measurements are taken.

These ground clearance dimensions are only for information when checking the track and can in no way affect the eligibility of the car.



Width of the car measured in the vertical plane passing through the axle of the wheels.

車軸上の車体幅	Front フロント	162.0	cm	Rear リア	162.5	cm
---------	---------------	-------	----	------------	-------	----

**CONVERSION TABLE**

1 inch / pouce	--	2.54 cm	1 quart US	--	0.9464 ltrs
1 foot / pied	--	30.4794 cm	1 pint (pt)	--	0.568 ltrs
1 square inch / pouce carre	--	6.452 cm <sup>2</sup>	1 gallon Imp.	--	4.546 ltrs
1 cubic inch / pouce cube	--	16.387 cm <sup>3</sup>	1 gallon US	--	3.785 ltrs
1 pound / livre (lb)	--	453.593 gr.	1 hundred weight (cwt)	--	50.802 kg



Make NISSAN

Model GC110  
型式

F.I.A. Rec. No.

**CHASSIS AND COACHWORK** (Photographs A, B and C)

シャーシー、ボデー

20. Chassis/body construction : ~~separate~~ / unitary construction  
シャーシー/ボディーの構造 ~~別体構造~~ / 一体構造
21. Unitary construction, material (s) Steel  
一体構造の場合その材質
22. Separate constructions: material(s) of chassis  
セパレート構造の場合その材質
23. Material (s) of coachwork  
ボディーの材質
24. Number of doors 4 Material (s) Steel  
ドアの数 材質
25. Material (s) of bonnet Steel  
ボンネットの材質
26. Material (s) of boot lid Steel  
トランクリッドの材質
27. Material (s) of rear-window Glass  
リヤウインドシールドの材質
28. Material (s) of windscreen Glass (Laminated)  
フロントウインドシールドの材質
29. Material (s) of front-door windows Glass  
フロントドアウインドーの材質
30. Material (s) of rear-door windows Glass  
リヤドアウインドーの材質
31. Sliding system of door windows Vertical, manual  
ドアウインドーの開閉方式
32. Material (s) of rear-quarter light  
リヤクォーターウインドーの材質

**ACCESSORIES AND UPHOLSTERY**

アクセサリ

38. Interior heating : yes - ~~no~~ 39. Air-conditioning : ~~yes~~ - no
40. Ventilation : yes - ~~no~~
41. Front seats, type of seats and upholstery Separate, Vinyl
42. Weight of front seat (s), complete with supports and rails, out of the car :  
16 X 2 kg lbs
43. Rear seats, type of seats and upholstery Bench, Vinyl
44. Front bumper, material (s) Steel Weight 6.0 kg lbs  
フロントバンパーの材質 重量
45. Rear bumper, material (s) Steel Weight 4.5 kg lbs  
リヤバンパーの材質 重量

**WHEELS**

ホイール

50. Type Pressed Steel  
形式
51. Weight (per wheel, without tyre) 7.0 kg lbs  
重量
52. Method of attachment 4 Nuts  
取付け方法
53. Rim diameter 356 mm 14.0 inches  
リム径
54. Rim width 114 mm 4.5 inches  
リム幅

**STEERING**

ステアリング

60. Type Recirculating ball  
形式
61. Servo-assistance : yes - no  
パワーステアリング ~~有~~ - 無
62. Number of turns of steering wheel from lock to lock 4.0  
ロックツーロック
63. In case of servo-assistance



**SUSPENSION**

サスペンション

- 70. Front suspension (photogr. D), type Mc.Pherson  
フロントサスペンションの形式
- 71. Type of spring Coil  
スプリングの種類
- 72. Stabiliser (if fitted) Torsion bar
- 73. Number of shockabsorbers 2  
ショックアブソーバーの数
- 74. Type Hydraulic Telescopic  
形式
- 78. Rear suspension (photogr. E), type Trailing arm  
リヤサスペンションの形式
- 79. Type of spring Coil  
スプリングの種類
- 80. Stabiliser (if fitted)
- 81. Number of shockabsorbers 2  
ショックアブソーバーの数
- 82. Type Hydraulic Telescopic  
形式

**BRAKES** (photographs F and G)

ブレーキ

- 90. System Hydraulic  
作動方式
- 91. Servo-assistance (if fitted), type Vacuum  
サーボシステムの形式
- 92. Number of hydraulic master cylinders 1  
マスターシリンダーの数

	FRONT フロント		REAR リヤ	
	mm	in.	mm	in.
93. Number of cylinders per wheel ホイール当りのシリンダー数	2		1	
94. Bore of wheel cylinder (s) ホイールシリンダーの内径	54.0		20.6	
<b>Drum Brakes</b> ドラムブレーキ				
95. Inside diameter ドラムの内径	mm	in.	229	mm in.
96. Length of brake linings ライニングの長さ	mm	in.	220	mm in.
97. Width of brake linings ライニングの幅	mm	in.	40	mm in.
98. Number of shoes per brake ブレーキ当りのシューの数			2	
99. Total area per brake 1 ブレーキ当りの総摩擦面積	mm <sup>2</sup>	sq. in.	17,600	mm <sup>2</sup> sq. in.
<b>Disc brakes</b> ディスクブレーキ				
100. Outside diameter ディスクの外径	254	mm in.		mm in.
101. Thickness of disc ディスクの厚さ	13	mm in.		mm in.
102. Length of brake linings パッドの長さ	75	mm in.		mm in.
103. Width of brake linings パッドの幅	52	mm in.		mm in.
104. Number of pads per brake. ブレーキ当りのパッドの数	2			
105. Total area per brake 1 ブレーキ当りの総摩擦面積	7,800	mm <sup>2</sup> sq. in.		mm <sup>2</sup> sq. in.



Make NISSAN

Model GC110  
型式

F.I.A. Rec. No.

**ENGINE** (photographs J and K) \*\*

130. Cycle サイクル	4			131. Number of cylinders シリンダー数	6			
132. Cylinder arrangement シリンダー配列	In-line							
133. Bore ボア	78.0	mm	3.07	in.	134. Stroke ストローク	69.7	mm	
135. Capacity per cylinder 1シリンダーの排気量					333.00	cm <sup>3</sup>	20.321	cu. in.
136. Total. cylinder-capacity 総排気量					1998	cm <sup>3</sup>	121.93	cu. in.
137. Material (s) of cylinder block シリンダーブロックの材質	Cast-iron							
138. Material (s) of sleeves (if fitted) スリーブの材質								
139. Cylinder-head, material (s) シリンダーヘッドの材質	Aluminum alloy						Number fitted 数	1
140. Number of inlet ports 吸気孔の数	6			141. Number of exhaust ports 排気孔の数	6			
142. Compression ratio	9.5							
143. Volume of one combustion chamber					39.2	cm <sup>3</sup>		cu. in.
144. Piston, material ピストンの材質	Aluminum alloy			145. Number of rings リングの数	3			
146. Distance from gudgeon pin centre line to highest point of piston crown	40	mm						inches
147. Crankshaft : <del>smoothed</del> / stamped クランクシャフト 鍛造 / 鍛造				148. Type of crankshaft : integral <del>≠</del> クランクシャフトの形式 : 一体式 <del>≠</del>				
149. Number of crankshaft main bearings メインベアリングの数	7							
150. Material of bearing cap ベアリングキャップの材質	Cast-iron							
151. System of lubrication : <del>dry sump</del> / oil in sump 潤滑方式 : <del>ドライサンプ</del> / ウェットサンプ								
152. Capacity, lubricant 潤滑油量	5.7	ltrs				pts		quarts US
153. Oil cooler : <del>yes</del> / no オイルクーラー : <del>有</del> / 無				154. Method of engine cooling Water エンジン冷却方式				quarts US
155. Capacity of cooling system	9.5	ltrs				pints		
156. Cooling fan (if fitted), dia.	350	mm				inches		
157. Number of blades of cooling fan	4							

**Bearings \*\***

158. Crankshaft main, type メインベアリングの形式	Plain			Dia. 内径	55	mm		in.
159. Connecting rod big end, コンロッド大端部ベアリングの形式	Plain			Dia. 内径	50	mm		in.

**Weights \*\***

160. Flywheel (clean)	9.9±0.2	kg		lbs				
161. Flywheel with clutch (all turning parts)				17.2±0.6	kg			lbs
162. Crankshaft	19.3±0.2	kg		lbs	163. Connecting rod	0.63±0.05	kg	lbs
164. Piston with rings and pin	0.47±0.01	kg		lbs				

\*\* for additional information concerning Wankel rotary engines see page 15, 16  
ロータリーエンジンは15、16頁参照



**FOUR STROKE ENGINES \* , \* \***

4サイクルエンジン

- 170. Number of camshafts 1  
カムシャフトの数
- 172. Type of camshaft drive Chain  
カムシャフトの駆動方式
- 173. Type of valve operation Rocker arm  
バルブの作動方式

171. Location Cylinder head  
カムシャフトの位置

**INLET (see page 8) \* , \* \***  
吸気系

- 180. Material(s) of inlet manifold Aluminum alloy  
マニホールドの材質
- 181. Diameter of valves 38 mm 1.50 inches  
バルブの径
- 182. Max. valve lift 11 mm 0.43 in.  
バルブリフト
- 184. Type of spring Coil  
バルブスプリングの種類
- 186. Tappet clearance for checking timing (cold) 0.20 mm inches
- 187. Valves open at (with tolerance for tappet clearance indicated) B.T.D.C 12° ± 7°
- 188. Valves close at (with tolerance for tappet clearance indicated) A.B.D.C 48° ± 7°
- 189. Air filter, type Dry

**EXHAUST (see page 8) \* , \* \***  
排気系

- 195. Material (s) of exhaust manifold Cast iron  
マニホールドの材質
- 196. Diameter of valves 33 mm 1.30 inches  
バルブの径
- 197. Max. valve lift 11 mm 0.43 in.  
バルブリフト
- 199. Type of spring Coil  
バルブ・スプリングの種類
- 201. Tappet clearance for checking timing (cold) 0.25 mm inches
- 202. Valves open at (with tolerance for tappet clearance indicated) B.B.D.C 54° ± 7°
- 203. Valves close at (with tolerance for tappet clearance indicated) A.T.D.C 14° ± 7°

**CARBURETION (photograph N)**  
気化器

- 210. Number of carburetors fitted 1  
キャブレターの数
- 212. Make HITACHI  
製造会社
- 214. Number of mixture passages per carburetor 2  
キャブレター当りのバルブ数
- 215. Flange hole diameter of exit port(s) of carburetor 32 & 34 mm in.  
キャブレター出口内径
- 216. Minimum dimensions of mixture passage (s) with piston at max. height (example: SU)  
ベンチュリーの最小寸法 (SUはピストン最上部で測定)  
24 & 28 mm inches
- 211. Type Down draft  
形式
- 213. Model DAF 342-13  
型式

**INJECTION (if fitted)**  
燃料噴射

- 220. Make of pump  
ポンプの製造会社
- 222. Model or type of pump  
ポンプの型式
- 224. Location of injectors  
ノズルの位置
- 225. Minimum diameter of inlet pipe  
吸気管の最小径
- 221. Number of plungers  
プランジャーの数
- 223. Total number of injectors  
ノズルの総数

\* ) for additional information concerning two-stroke engines and super-charged engines see page 14.  
2サイクルエンジン、過給機付エンジンは14頁参照

\* \* ) for additional information concerning Wankel rotary engines see page 15, 16.  
ロータリーエンジンは15, 16頁、参照



**ENGINE ACCESSORIES**

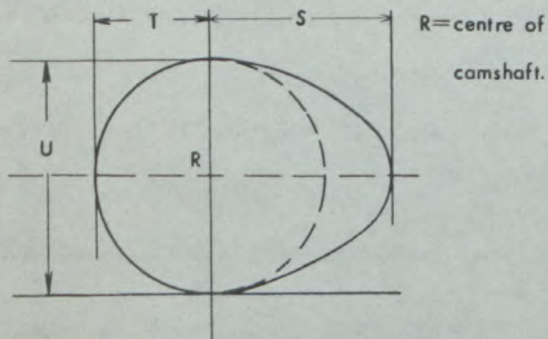
エンジン補機

- |  |   |
|--|---|
| 230. Fuel pump : mechanical <del>and</del> / <del>or</del> electric<br>燃料ポンプ 機械式/ <del>電気式</del> | 231. No. fitted 1<br>ポンプの数  |
| 232. Type of ignition system Make & Break<br>点火方式  | 233. No. of distributors 1<br>ディストリビューターの数  |
| 234. No. of ignition coils 1<br>コイルの数  | 235. No. of spark plugs per cylinder/ <del>rotor</del> 1<br>シリンダー当りのプラグ数(又はローター当りの) |
| 236. Generator, type: <del>dynamo</del> /alternator-number fitted 1<br>発電器 <del>直流</del> /交流 数   | 237. Method of drive V-belt<br>駆動方式   |
| 238. Voltage of generator 12 volts   | 239. Battery, number 1<br>バッテリーの数   |
| 240. Location Engine room<br>バッテリー位置   |   |
| 241. Voltage of battery 12 volts<br>バッテリー電圧  |   |

**ENGINE AND CAR PERFORMANCES** (as declared by manufacturer in catalogue)

- |  |
|--|
| 250. Max. engine output 120 ps (type of horsepower: JIS ) at * 6,000 rpm |
| 251. Maximum rpm 6500 rpm output at that figure 110 ps                   |
| 252. Maximum torque 17.0 kgm at 4,000 rpm                                |
| 253. Maximum speed of the car 175 km/hour miles / hour                   |

255. Cam profile  
カムプロフィール



Inlet cam

吸気カム

S =	23.5	mm	0.93	inches
T =	16.5	mm	0.65	inches
U =	33.0	mm	1.30	inches

Exhaust cam

排気カム

S =	23.9	mm	0.94	inches
T =	16.5	mm	0.65	inches
U =	33.0	mm	1.30	inches

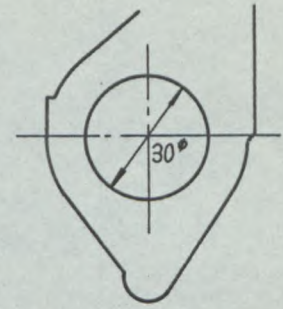
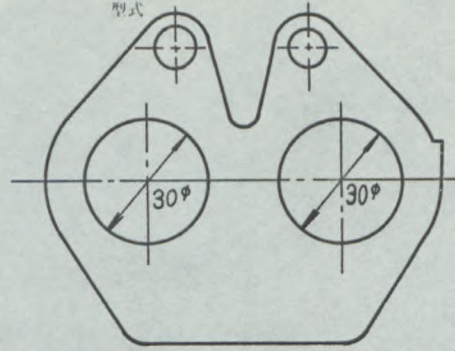


Make NISSAN

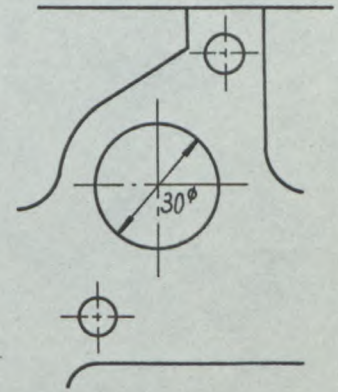
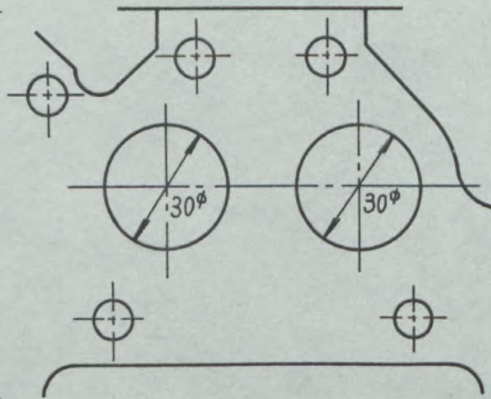
Model GC110  
型式

J·A·F 公認番号 T-203  
F.I.A. Rec. No. 5509

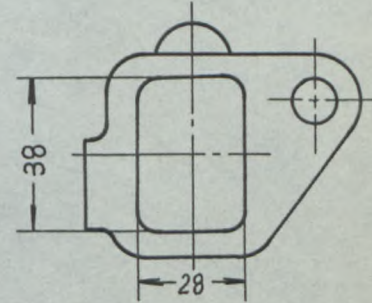
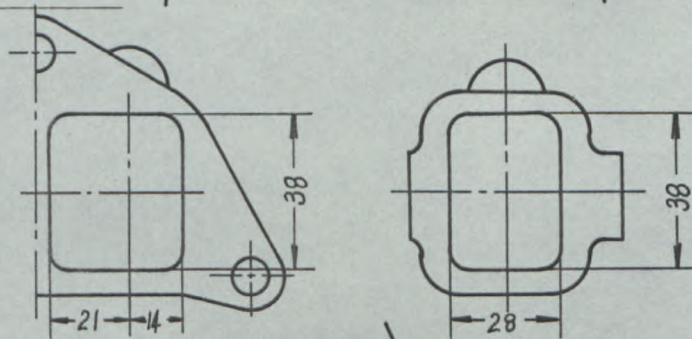
Drawing inlet manifold ports, side of cylinder-head/housing. scale or dimensions and manufacturing tolerance.



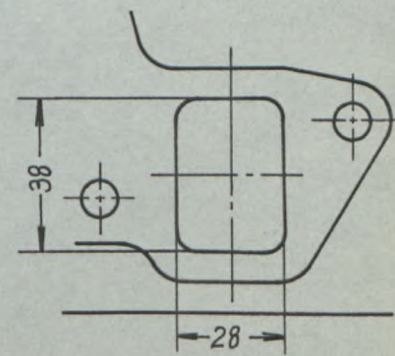
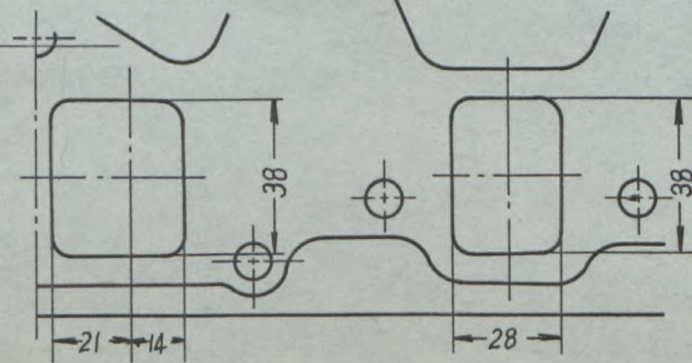
Drawing of entrance to inlet port of cylinder-head/housing. scale or dimensions and manufacturing tolerance.



Drawing exhaust manifold ports, side of cylinder-head/housing. scale or dimensions and manufacturing tolerance.



Drawing of exit to exhaust port of cylinderhead/housing. Indicate scale or dimensions and manufacturing tolerance.



Unit: mm  
Tolerance:  $\pm 1.5$





**DRIVE TRAIN**

駆動系

**CLUTCH**

クラッチ

260. Type of clutch **Dry plate**  
形式

261. No. of plates **1**  
プレッシャープレートの数

262. Dia. of clutch plates **227** mm inches  
プレッシャープレートの外径

263. Dia. of linings, inside **150** mm in. outside **225** mm in.  
フェーシングの内径 外径

264. Method of operating clutch **Hydraulic**  
作動方式

**GEAR BOX (photograph H)**

トランスミッション

270. Manual type, make **NISSAN**  
手動式の製造会社名

Method of operation **Mechanical**  
作動方式

271. No. of gear-box ratios forward **4 & 5**  
前進段数

272. Synchronized forward ratios **1,2,3,& 4 or 1,2,3,4,& 5**

273. Location of gear-shift **Floor**  
シフトレバーの位置

274. Automatic, make **NISSAN**  
自動式の製造会社名

type **3N71**  
形式

275. No. of forward ratios **3**  
前進段数

276. Location of gear-shift **Floor**  
シフトレバーの位置

277.	Manual 手動		Automatic 自動		Alternative manual/automatic 手動/自動			
	Ratio ギヤー比	No. teeth 歯数	Ratio ギヤー比	No. teeth 歯数	Ratio ギヤー比	No. teeth 歯数	Ratio ギヤー比	No. teeth 歯数
1	3.59	$\frac{32}{21} \times \frac{33}{14}$	2.46	$2 + \frac{33}{72}$	3.32	$\frac{31}{22} \times \frac{33}{14}$		
2	2.25	$\frac{32}{21} \times \frac{28}{19}$	1.46	$1 + \frac{33}{72}$	2.08	$\frac{31}{22} \times \frac{28}{19}$		
3	1.42	$\frac{32}{21} \times \frac{26}{28}$	1.00		1.31	$\frac{31}{22} \times \frac{26}{28}$		
4	1.00				1.00			
5					0.86	$\frac{31}{22} \times \frac{19}{31}$		
6								
reverse リバース	3.66	$\frac{32}{21} \times \frac{23}{15} \times \frac{36}{23}$	2.18	$\frac{72}{33}$	3.38	$\frac{31}{22} \times \frac{23}{15} \times \frac{36}{23}$		

278. Overdrive, type

オーバードライブ形式

279. Forward gears on which overdrive can be selected

オーバードライブの作動段数

280. Overdrive ratio

オーバードライブ比

**FINAL DRIVE**

ファイナル

290. Type of final drive **Hypoid gear**  
形式

291. Type of differential **Bevel gear**  
差動機形式

292. Type of limited slip differential (if fitted)  
リミテッドスリップデフの形式

293. Final drive ratio **3.90** **4.11**  
ギヤー比

Number of teeth **39/10** **37/9**  
歯数



Optional equipement affecting preceeding information. This to be stated together with reference number.  
オプション:

The following items have been added.

Photograph

A. 3/4 view of car from front



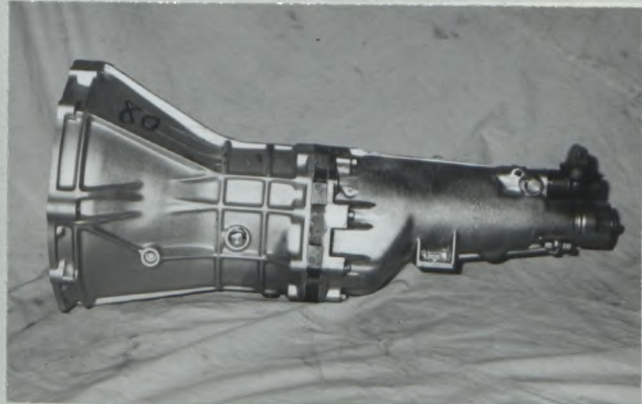
B. 3/4 view of car from rear



C. Interior view



H. Gear box (5 speed)



HARDTOP MODEL

- |                                       |          |          |
|---------------------------------------|----------|----------|
| 6. Overall height of the car          | 138.5 cm |          |
| 9. Weight                             | 1,100 kg | 2428 lbs |
| 24. Number of doors                   | 2        |          |
| 32. Material(s) of rear quarter light | Glass    |          |

Photograph

A. 3/4 view of car from front



B. 3/4 view of car from rear



Make NISSAN

Model GC 110  
型式

Photograph

写真

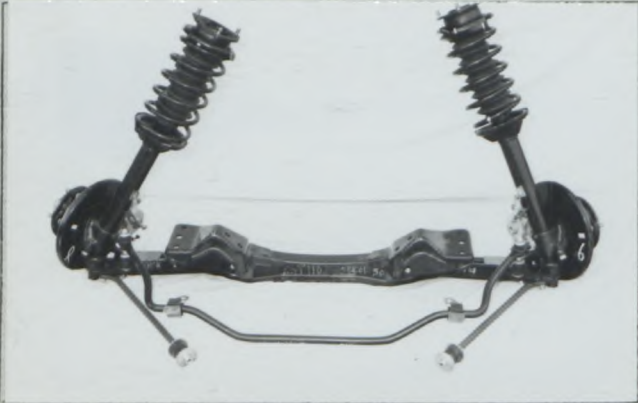
B, 3/4 view of car from rear 全体写真 (斜め後方)



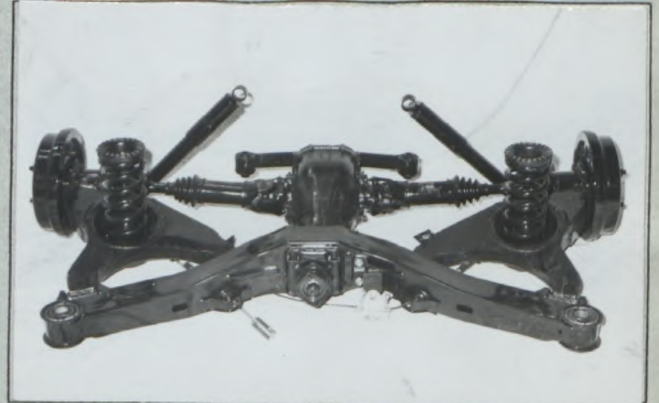
C, Interior view of car through driver's door (open or removed) with dashboard 運転席附近



D, Front axle complete, removed from car. Without wheels.  
フロントサスペンション



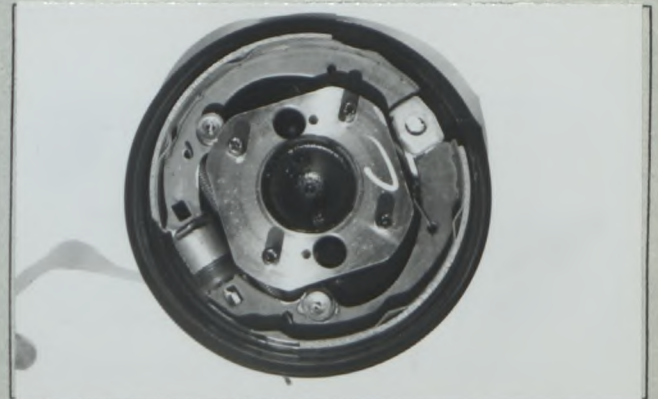
E, Rear axle complete without wheels, removed from car.  
リヤサスペンション



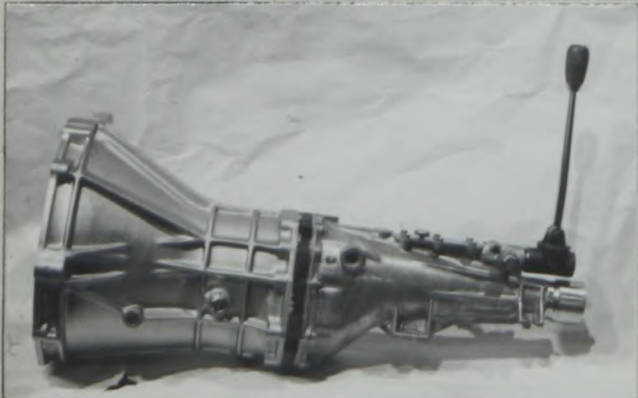
F, Front brake, drum removed or disc with caliper(s)  
フロントブレーキ



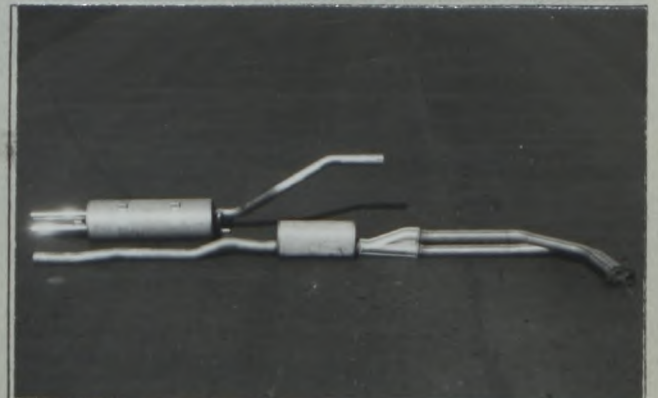
G, Rear brake, drum removed or disc with caliper(s)  
リヤブレーキ



H, Gear-box, view from side トランスミッション

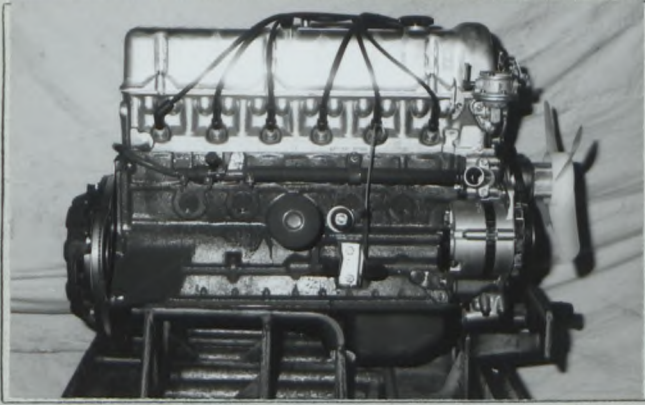


I, Silencer + exhaust pipes after exhaust manifold. 排気系

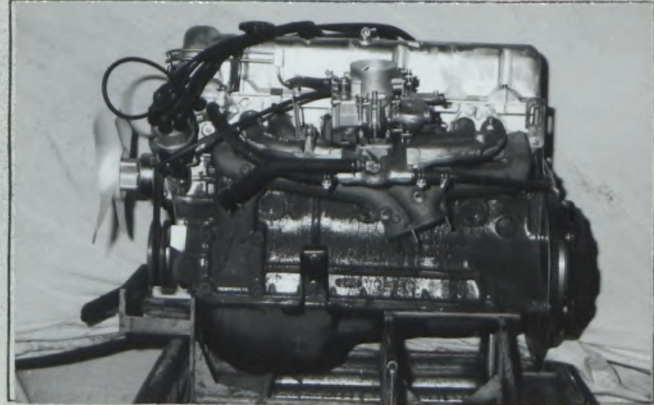


Photograph

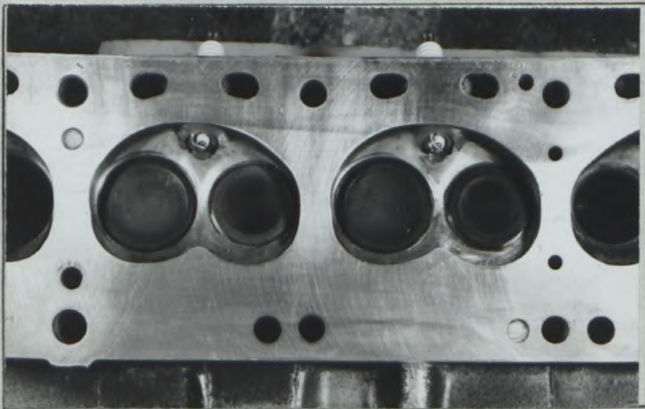
Engine unit out of car, from right. With clutch and accessories but without air filter nor gear-box. エンジン右側面



Engine unit out of car, from left. With clutch and accessories but without gear-box nor air filter. エンジン左側面



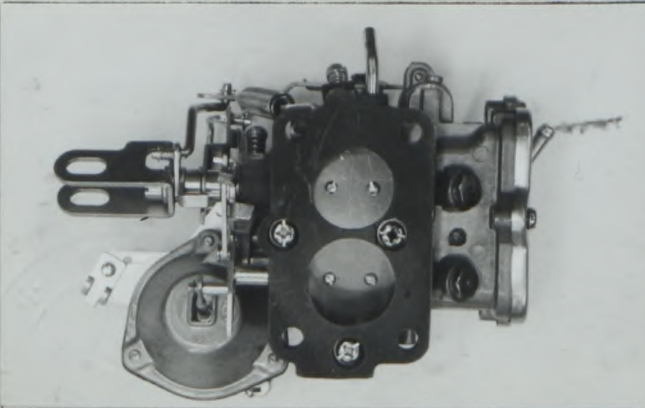
L, Combustion chamber 燃焼室 / Rotor housing ~~ローターハウジング~~



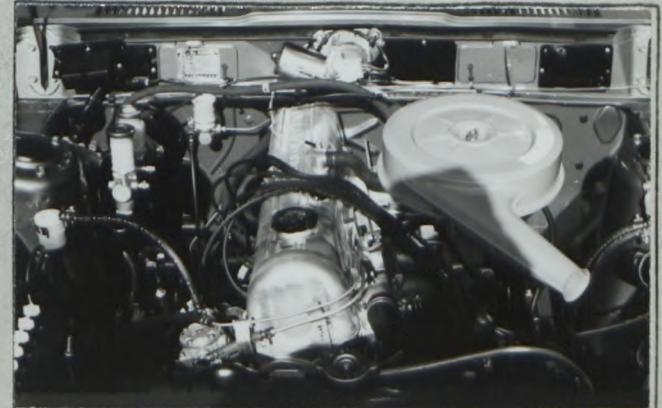
M, Piston crown ピストンクラウン / Rotor frank ~~ローター~~



N, Carburettor (view from side of manifold) 気化器



O, Engine in car with all accessories, bonnet open or removed. エンジンルーム



P, Inlet manifold 吸気マニホールド

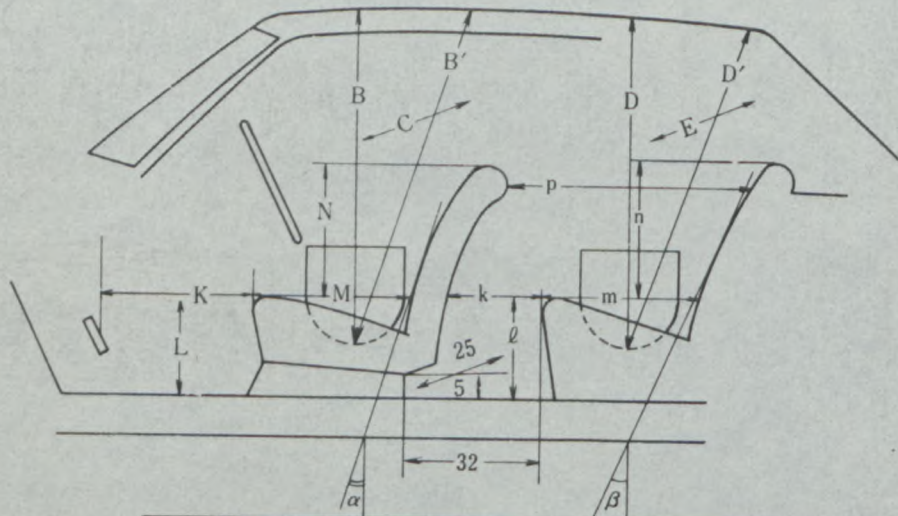


Q, Exhaust manifold 排気マニホールド



**DIMENSIONS OF INTERIOR**  
室内寸法  
(Conform to Art. 253 b of Appendix J)

For four seaters:  
4座席



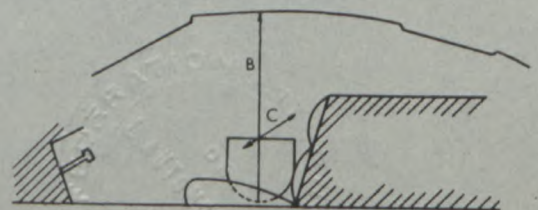
Minimum Dimensions (cm)							
B	B'	$\alpha$	C	D	D'	$\beta$	E
91 (89)	97 (96)	15°	134 (133)	91 (88)	95	27°	134 (133)

REMARKS:  
( ) = HARDTOP MODEL

Minimum Dimensions (cm)										
L	$\ell$	M	m	N	n	k+m	p	k	k+l+m	K+L+M
30	36	45	48			75	83	27	111	122
0.9L = 27.0		0.85M = 38.3		0.8N =		0.85(k+m) = 63.8		(15)	(95)	(120)

For two seaters:  
2座席

Minimum	Dimensions
B	C
cm	

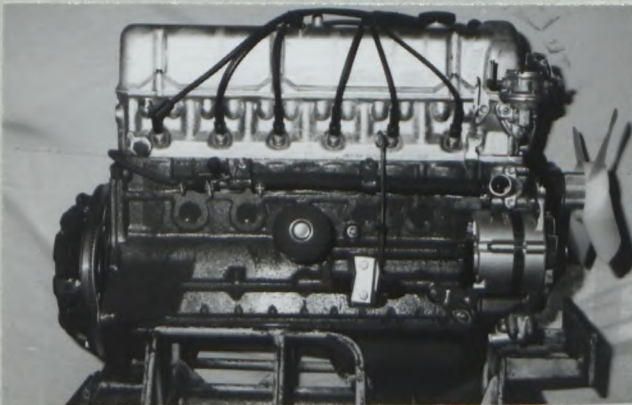


ENGINE (TWIN CARBURETTOR)

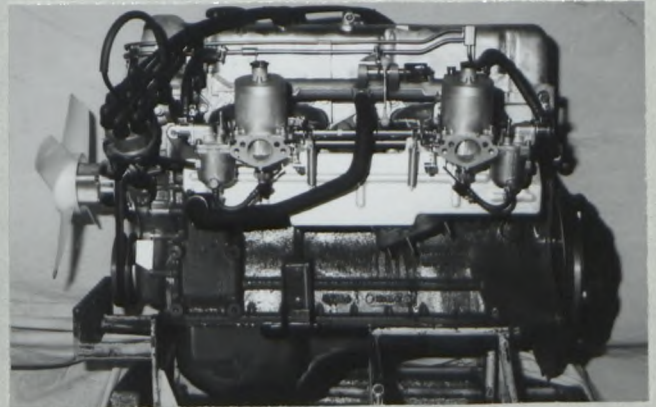
- 210. Number of carburettors fitted 2
- 211. Type Side draft
- 212. Make NIHON KIKAKI
- 213. Model HJG 38W-3
- 214. Number of mixture passages per carburettor 1
- 215. Flange hole diameter of exit port(s) of carburettor 38 mm
- 216. Minimum dimensions of mixture passage(s) with piston at max. height (example: SU) 29 mm
- 250. Max. engine output 130 ps (type Of horsepower: JIS) at 6,000 rpm
- 251. Maximum rpm 6,500 rpm output at that figure 123 ps
- 252. Maximum torque 17.5 kg.m at 4,400 rpm
- 253. Maximum speed of the car 180 km/hour

Photograph

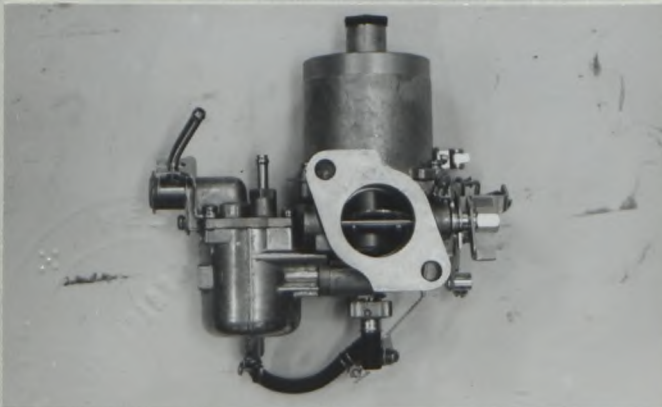
J. Engine unit out of the car, from right.



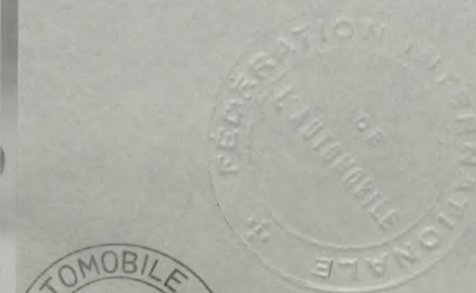
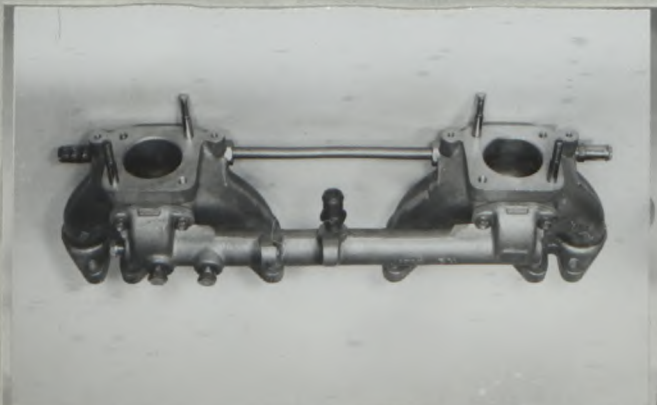
K. Engine unit out of the car, from left



N. Carburettor (view from side of manifold) O. Engine in car with all accesories.



P. Inlet manifold



Make NISSAN

Model GC110  
型式

J·A·F 公認番号

T-20

F.I.A. Rec. No.

5509

1/IV

VALID FOR GROUP 2 ONLY

AIR SPOILER REAR (PARTS No. 84360-R4800)

Photograph. Air spoiler rear



”valable en Groupe 2 uniquement”  
”valid for Group 2 only”

