

ACCELERATOR CONTROL, FUEL & EXHAUST SYSTEMS

GI

SECTION FE

MA

EM

LC

MODIFICATION NOTICE:

- KA24DE engine model has been added for Europe. For information not included here, refer to the KA24E engine model.
- YD25DDTi engine model has been added.
- ZD30DDT engine model has been added.

EC

FE

CONTENTS

CL

ACCELERATOR CONTROL SYSTEM	2	FUEL SYSTEM	4
Removal and Installation	2	EXHAUST SYSTEM	6

MT

AT

TF

PD

FA

RA

BR

ST

RS

BT

HA

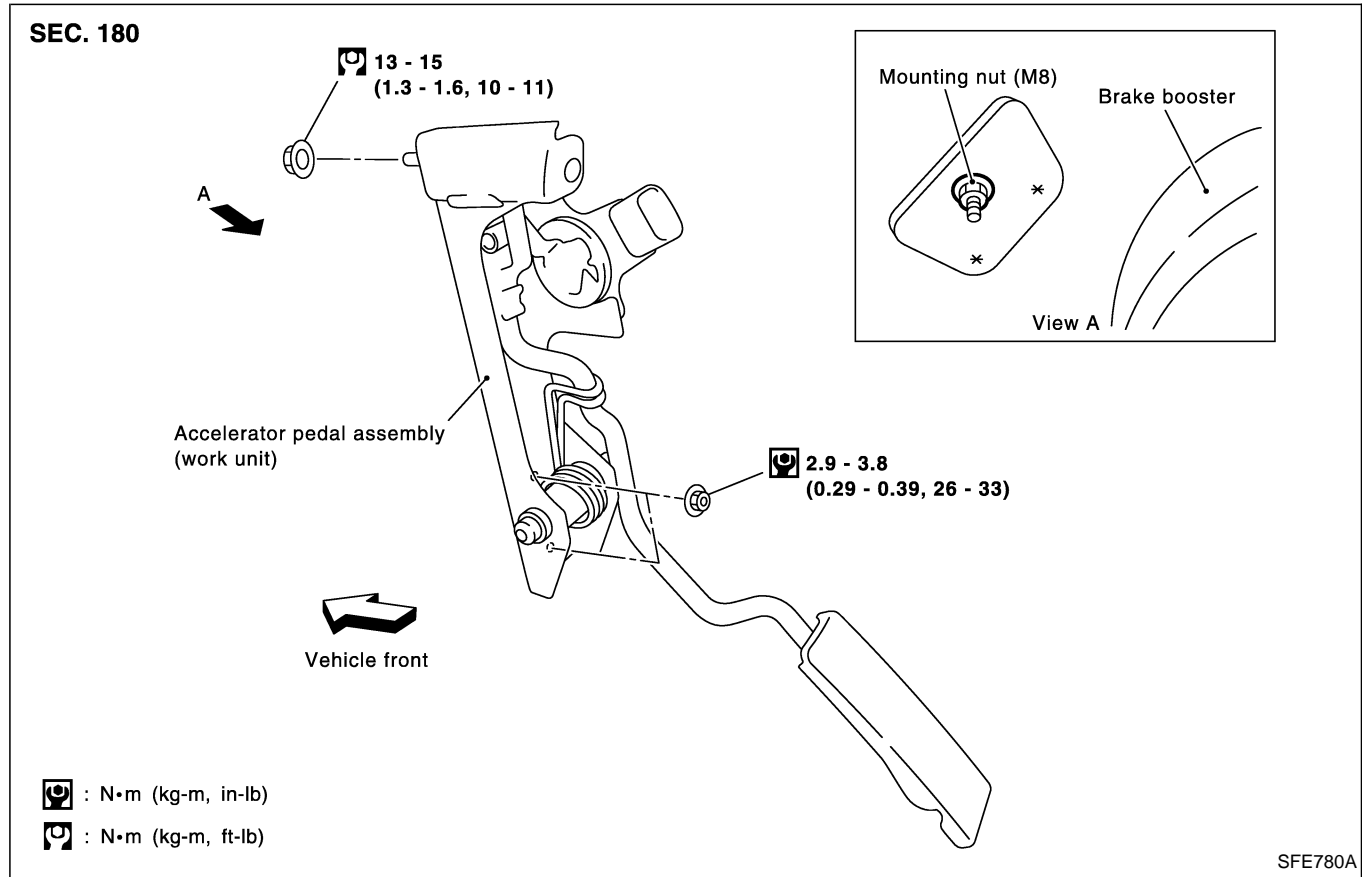
EL

IDX

ACCELERATOR CONTROL SYSTEM

Removal and Installation

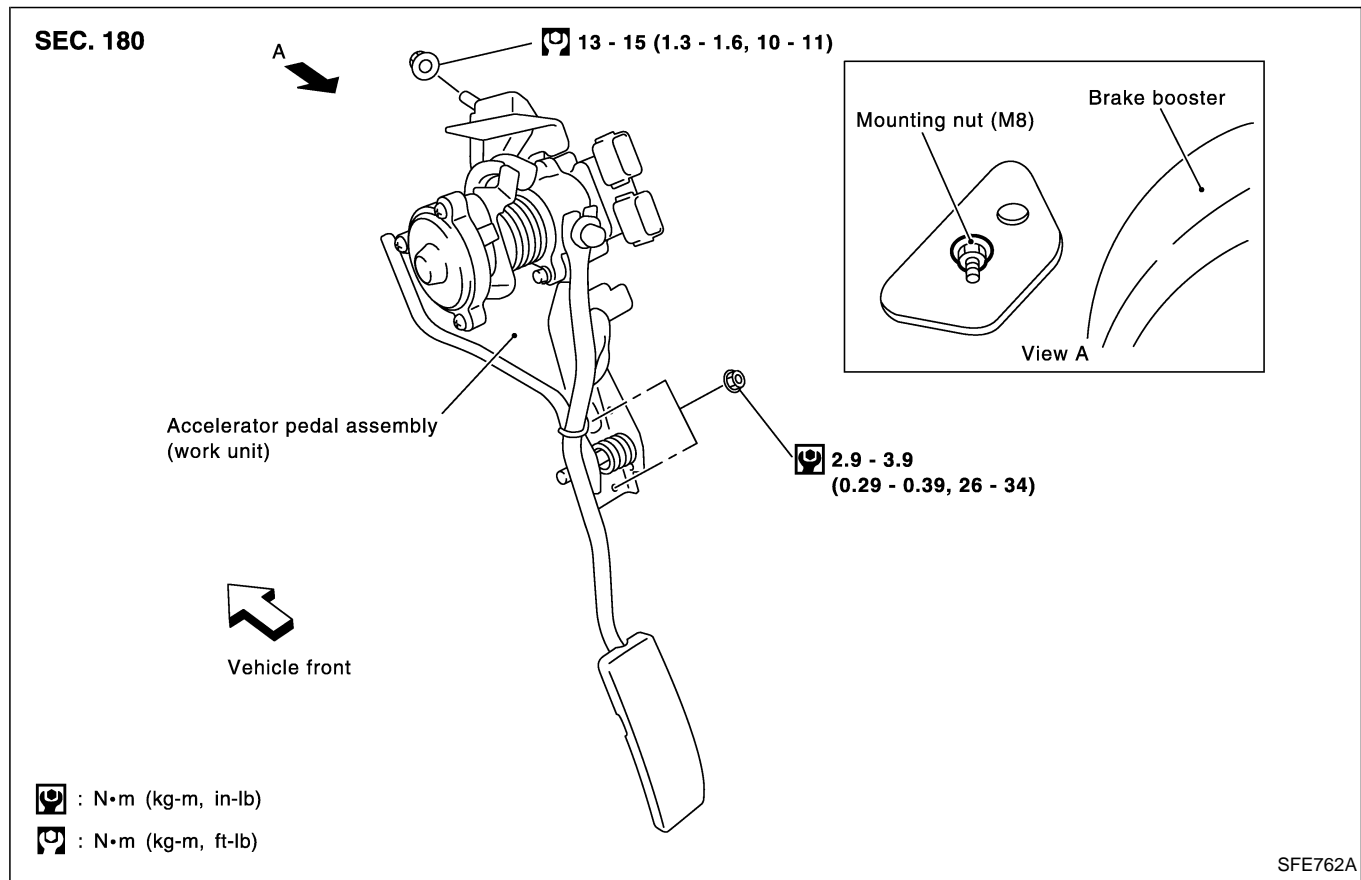
YD25DDTi ENGINE MODEL



ACCELERATOR CONTROL SYSTEM

Removal and Installation (Cont'd)

ZD30DDT ENGINE MODEL



REMOVAL

1. Remove harness connector.
2. Loosen nuts, and remove accelerator pedal assembly.

CAUTION:

- Do not disassemble the accelerator pedal assembly. Do not remove the sensors and the switches from the assembly.
- Avoid impact from dropping etc. during handling.
- Be careful to keep the assembly away from water.
- Do not adjust the adjusting screw (painted white) of the accelerator work unit.
- When the harness connector of the accelerator sensor is disconnected, perform "Accelerator Pedal Released Position Learning". Refer to "Basic Service Procedure" in EC section.

INSTALLATION

Install in the reverse order of removal.

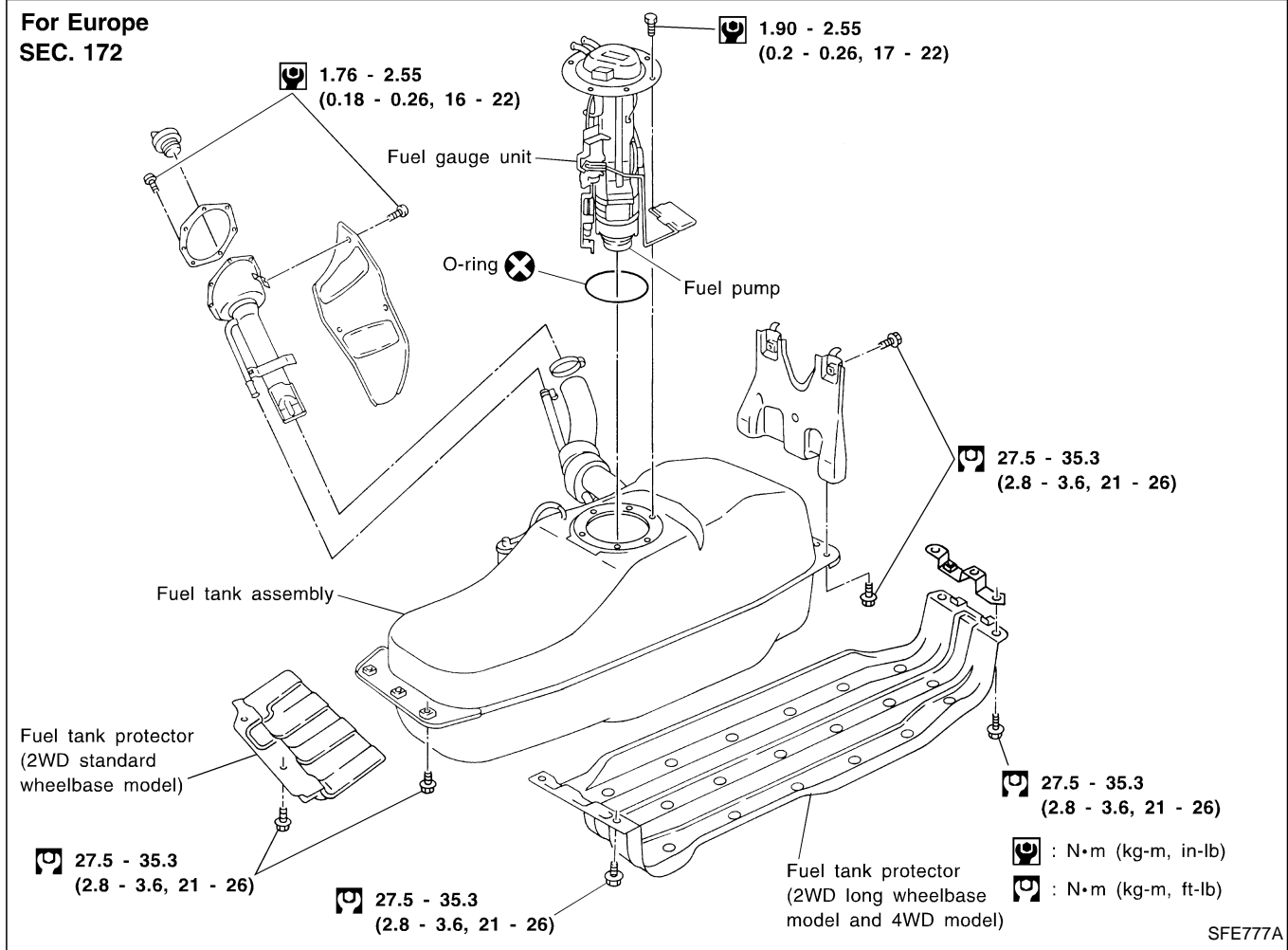
INSPECTION AFTER INSTALLATION

- Check that the accelerator pedal moves smoothly within the whole operation range.
- Check that the accelerator pedal securely returns to the original position.
- For the electrical inspection of the accelerator work unit, refer to EC section, "DTC 0403 ACCELERATOR PEDAL POSITION SENSOR", and "DTC 0203 ACCEL POS SW (F/C) (ZD30DDT engine)".
- Check that the drum of the accelerator work unit can be fully opened.

FUEL SYSTEM

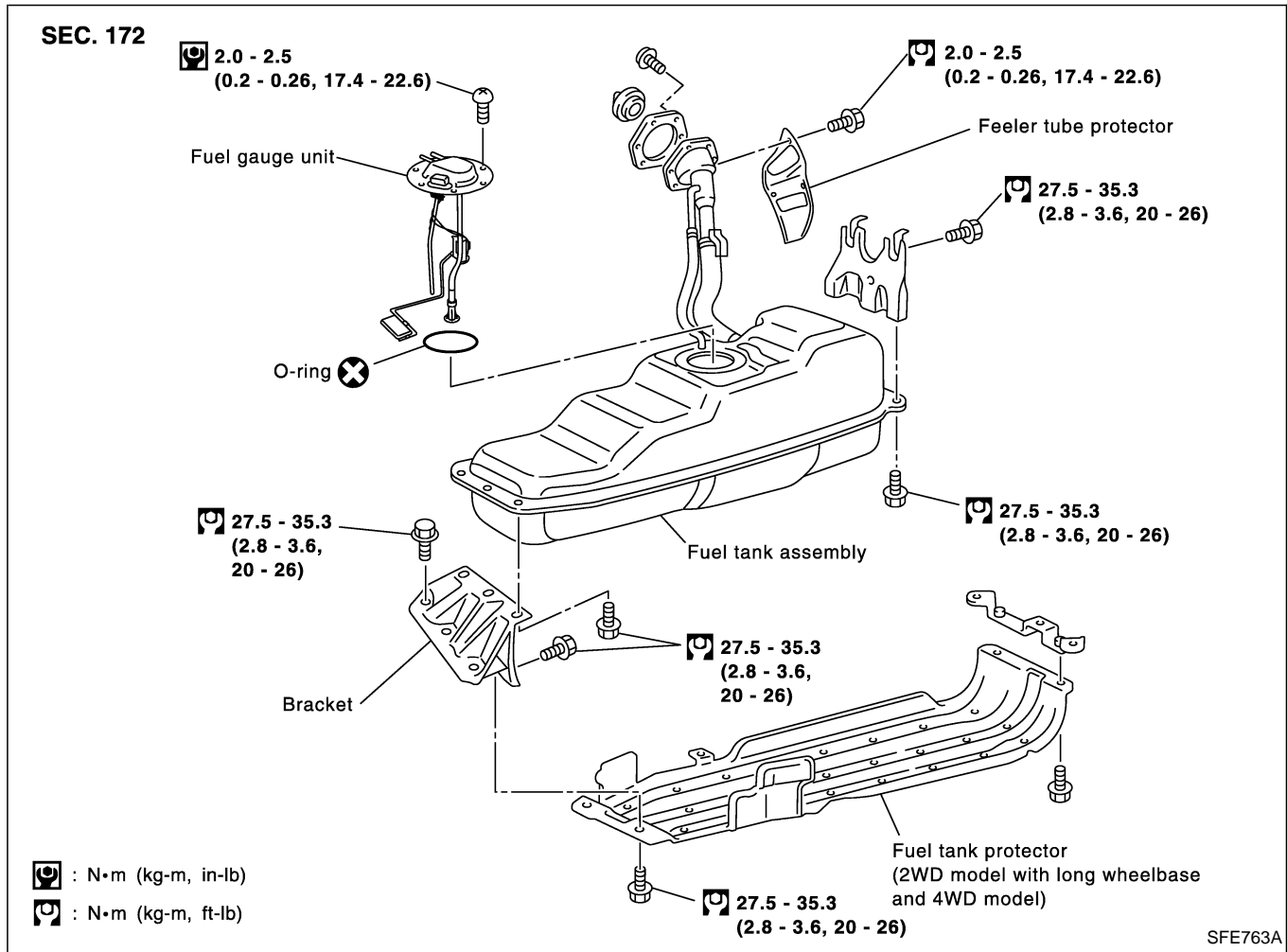
KA24DE ENGINE MODEL

For Europe
SEC. 172



FUEL SYSTEM

YD25DDTi AND ZD30DDT ENGINE MODELS

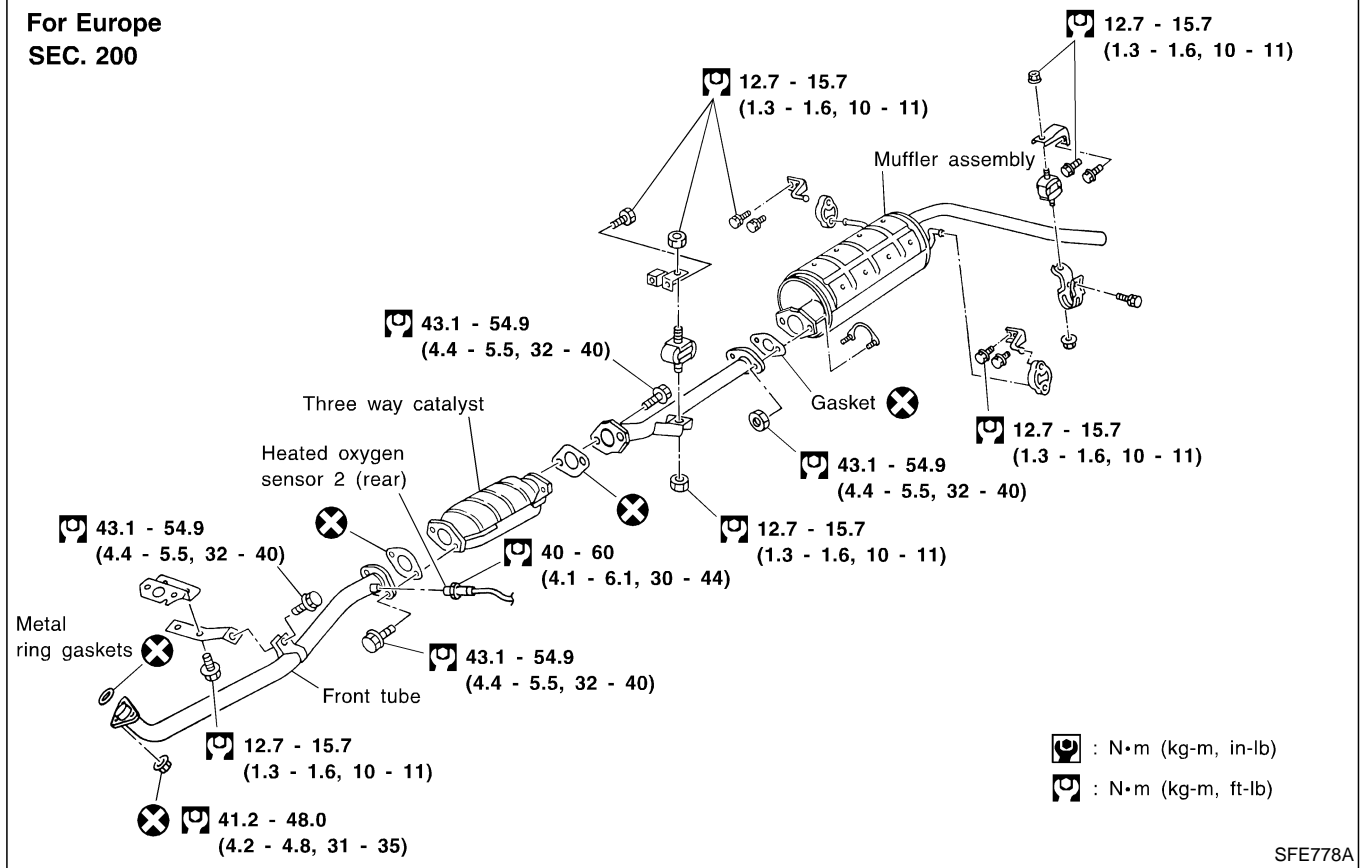


GI
MA
EM
LC
EC
FE
CL
MT
AT
TF
PD
FA
RA
BR
ST
RS
BT
HA
EL
IDX

EXHAUST SYSTEM

KA24DE ENGINE (2WD) MODEL

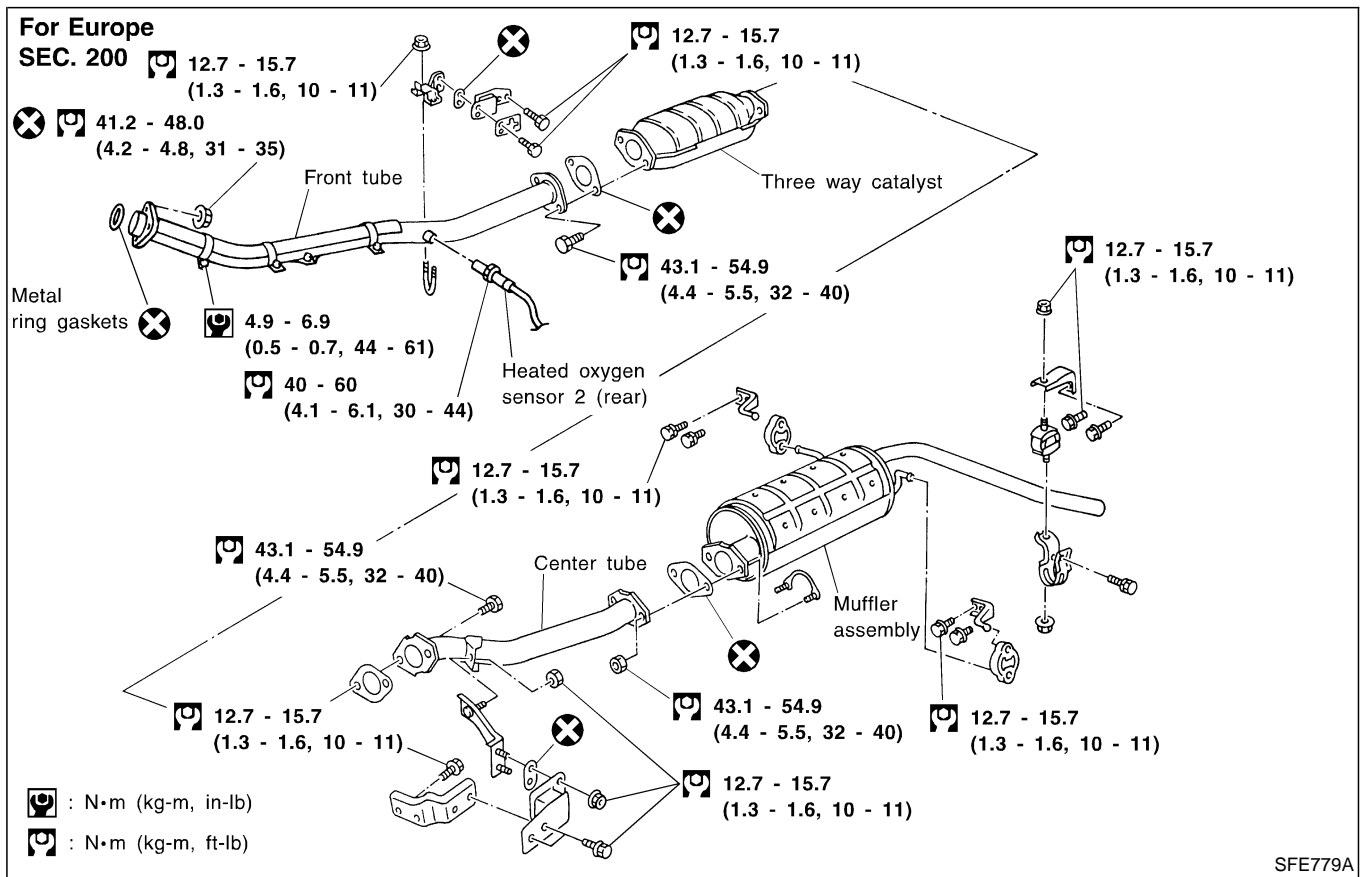
For Europe
SEC. 200



SFE778A

KA24DE ENGINE (4WD) MODEL

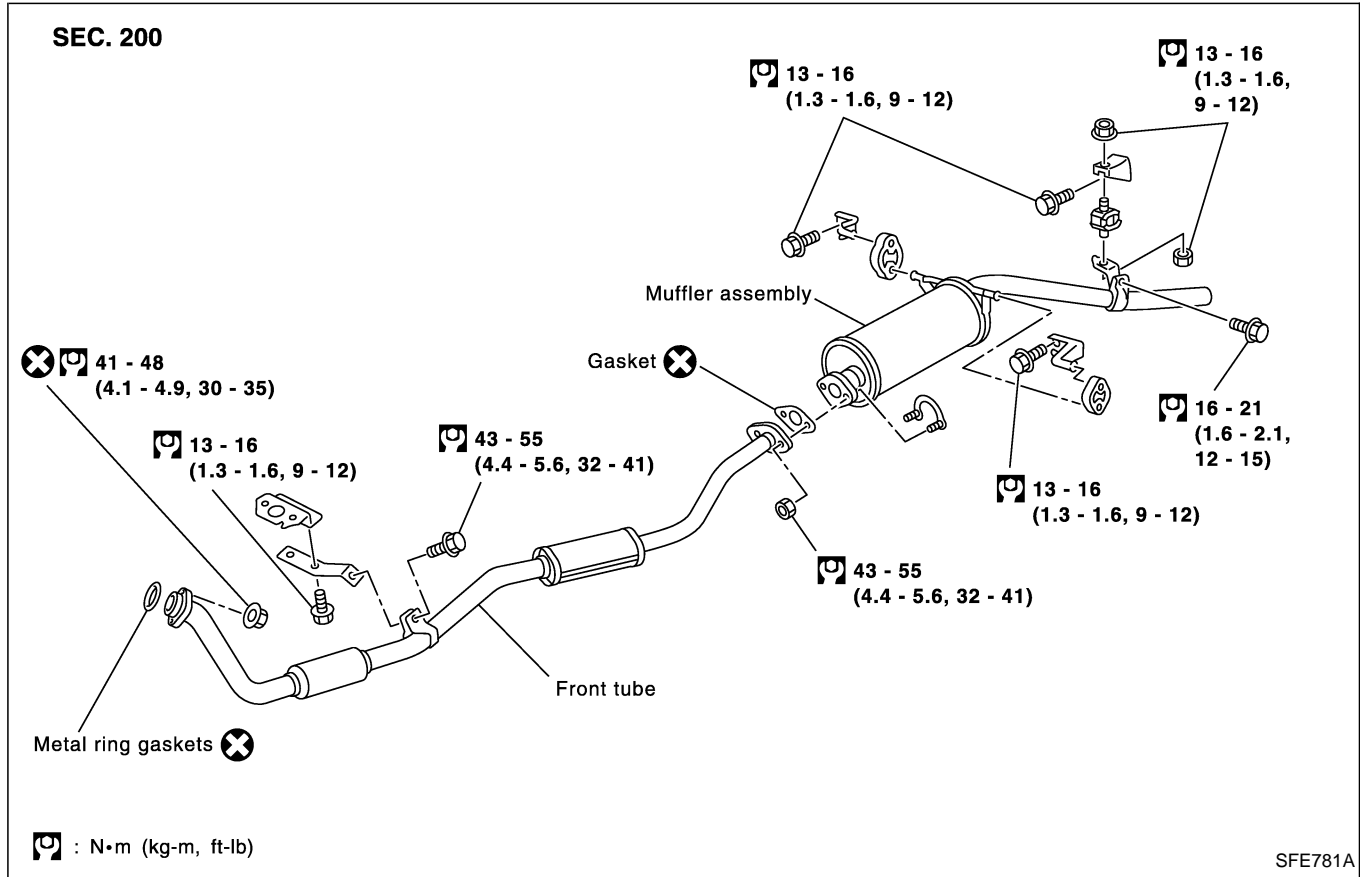
For Europe
SEC. 200



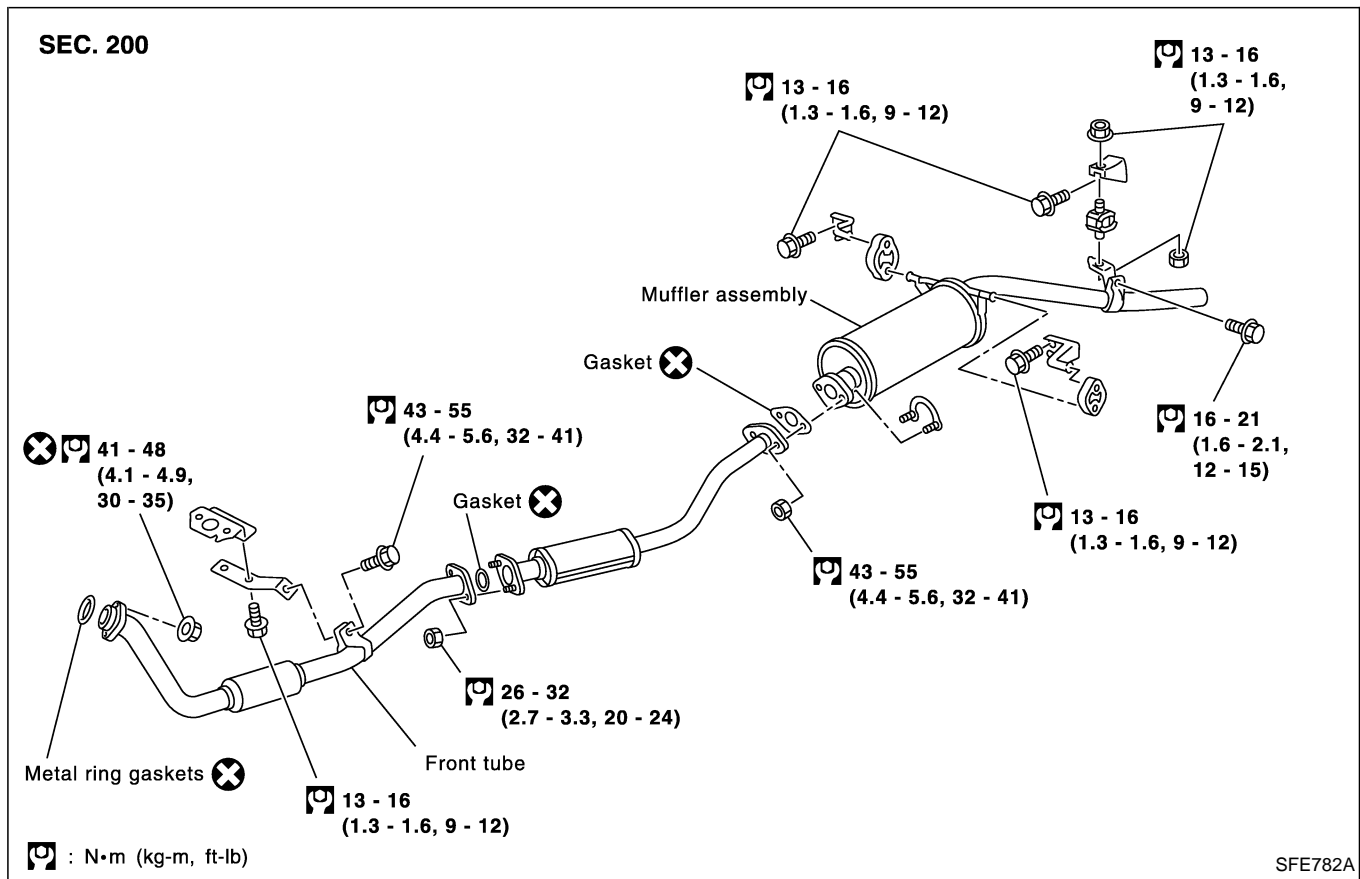
SFE779A

EXHAUST SYSTEM

YD25DDTi ENGINE (2WD) MODEL



YD25DDTi ENIGNE (4WD APPEARANCE 2WD) MODEL

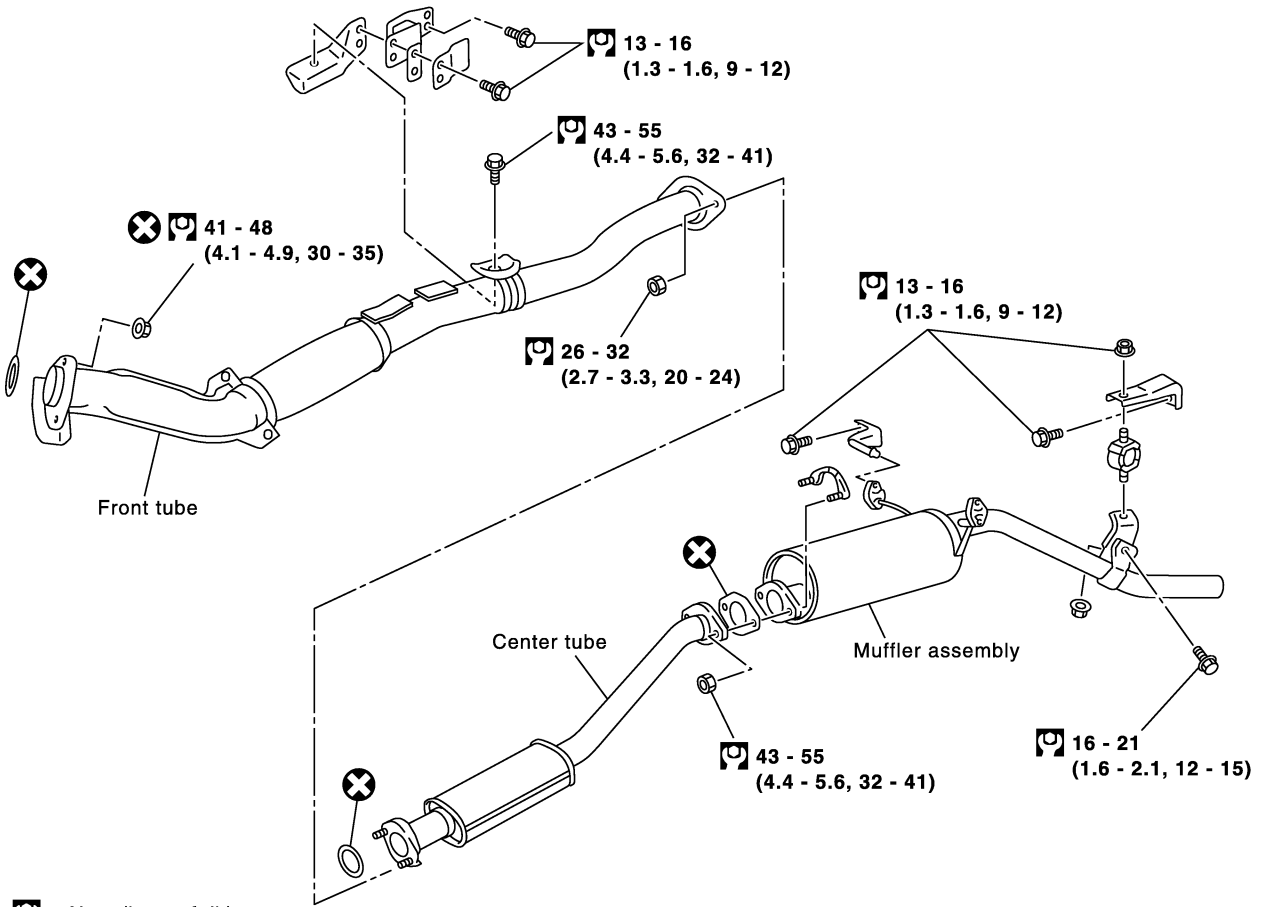


GI
MA
EM
LC
EC
FE
CL
MT
AT
TF
PD
FA
RA
BR
ST
RS
BT
HA
EL
IDX

EXHAUST SYSTEM

YD25DDTi (4WD) AND ZD30DDT ENGINE MODELS

SEC. 200



SFE764A