

# SECTION **GI**

MA

EM

LC

EC

FE

CL

MT

AT

TF

PD

FA

RA

BR

ST

RS

BT

HA

EL

IDX

## MODIFICATION NOTICE:

- YD25DDTi engine has been adopted.
- ZD30DDT engine has been adopted.
- KA24E engine has been replaced with KA24DE engine for Europe.
- The appearance design has been changed except for the Middle East.

## CONTENTS

<b>CONSULT-II CHECKING SYSTEM</b> .....2	<b>IDENTIFICATION INFORMATION</b> .....4
Function and System Application .....2	Model Variation .....4
Nickel Metal Hydride Battery Replacement.....2	Identification Number.....8
Checking Equipment.....3	Wheels and Tires.....11
CONSULT-II Data Link Connector (DLC) Circuit .....3	Dimensions .....12

This modification has been included in production starting with the following vehicle identification numbers (Chassis number):

### For the Middle East

JN6AD21S\*2X070001  
 JN6AD22S\*2X050001  
 JN6AD23S\*2X110001  
 JN6BD21S\*2X070001  
 JN6BD23S\*2X110001  
 JN6BD22Y\*2X020001  
 JN6BD23Y\*2X020001  
 JN6DD21S\*2X040001  
 JN6DD23S\*2X050001  
 JN6AD23S\*2A720101  
 JN6BD23S\*2A720101  
 JN6DD23S\*2A720101  
 JN6BD23Y\*2A720101

### For Europe

⚙ JN1APGD22U0050001 ⚙  
 ⚙ JN1BPGD22U0030001 ⚙  
 ⚙ JN1APUD22U0030001 ⚙  
 ⚙ JN1BPUD22U0070001 ⚙  
 ⚙ JN1CPUD22U0070001 ⚙  
 ⚙ JN1ADGD22U0020001 ⚙  
 ⚙ JN1BDGD22U0030001 ⚙  
 ⚙ JN1BDUD22U0030001 ⚙  
 ⚙ JN1CDUD22U0030001 ⚙  
 ⚙ JN1CPGD22U0040001 ⚙  
 ⚙ JN1CPGD22U0740101 ⚙  
 ⚙ JN1CDUD22U0740101 ⚙  
 ⚙ JN1CPUD22U0765101 ⚙

### For Israel

⚙ JN1CPGD222X560001 ⚙  
 ⚙ JN1CPUD222X570001 ⚙

### For Australia and New Zealand

⚙ JN1AFGD22A0020001 ⚙  
 ⚙ JN1CFGD22A0020001 ⚙  
 ⚙ JN1CFUD22A0020001 ⚙  
 ⚙ JN1ANUD22A0010001 ⚙  
 ⚙ JN1CNUD22A0020001 ⚙  
 ⚙ JN1BNUD22A0010001 ⚙  
 ⚙ JN1CPGD22A0010001 ⚙

### For Venezuela and Ecuador

⚙ JN1ADGD222X420001 ⚙  
 ⚙ JN1CDGD222X430001 ⚙  
 ⚙ JN1ADUD222X420001 ⚙  
 ⚙ JN1CDUD222X430001 ⚙  
 ⚙ JN1ANUD222X420001 ⚙  
 ⚙ JN1CNUD222X440001 ⚙  
 ⚙ JN1CPGD222X450001 ⚙

### Except for the Middle East, Europe, Israel, Australia, New Zealand, Venezuela and Ecuador

⚙ JN1CJUD22Z0050001 ⚙  
 ⚙ JN1ANUD22Z0000001 ⚙  
 ⚙ JN1CNUD22Z0000001 ⚙  
 ⚙ JN1CPGD22Z0000001 ⚙  
 ⚙ JN1ABGD22Z0030001 ⚙  
 ⚙ JN1CBGD22Z0040001 ⚙  
 ⚙ JN1ADGD22Z0030001 ⚙  
 ⚙ JN1ADUD22Z0020001 ⚙  
 ⚙ JN1CDGD22Z0040001 ⚙  
 ⚙ JN1CDUD22Z0020001 ⚙  
 ⚙ JN1AHGD22Z0030001 ⚙  
 ⚙ JN1CHGD22Z0070001 ⚙  
 ⚙ JN1AJUD22Z0030001 ⚙

# CONSULT-II CHECKING SYSTEM

## Function and System Application

Diagnostic test mode	Function	ENGINE	A/T	ABS	AIR BAG
Work support	This mode enables a technician to adjust some devices faster and more accurate by following the indications on CONSULT-II.	x	x	—	—
Self-diagnostic results	Self-diagnostic results can be read and erased quickly.	x	x	x	x
Trouble diagnostic record	Current self-diagnostic results and all trouble diagnostic records previously stored can be read.	—	—	—	x
ECU discriminated No.	Classification number of a replacement ECU can be read to prevent an incorrect ECU from being installed.	—	—	—	x
Data monitor	Input/Output data in the ECU (ECM) can be read.	x	x	x	—
DTC work support	This mode enables a technician to set operating conditions to confirm self-diagnosis status/results.	—	x	—	—
Active test	Diagnostic Test Mode in which CONSULT-II drives some actuators apart from the ECMs and also shifts some parameters in a specified range.	x	—	x	—
ECU (ECM) part number	ECU (ECM) part number can be read.	x	x	x	—

x: Applicable

## Nickel Metal Hydride Battery Replacement

CONSULT-II contains a nickel metal hydride battery. When replacing the battery obey the following:

**WARNING:**

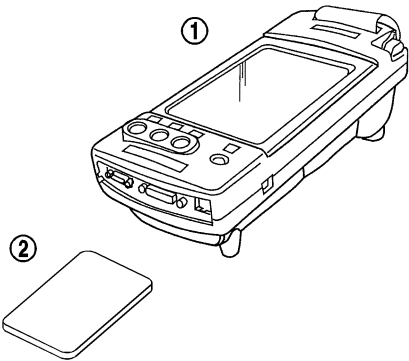
**Replace the nickel metal hydride battery with Genuine CONSULT-II battery only. Use of another battery may present a risk of fire or explosion. The battery may present a fire or chemical burn hazard if mistreated. Do not recharge, disassemble or dispose of in fire.**

**Keep the battery out of reach of children and discard used battery conforming to the local regulations.**

# CONSULT-II CHECKING SYSTEM

## Checking Equipment

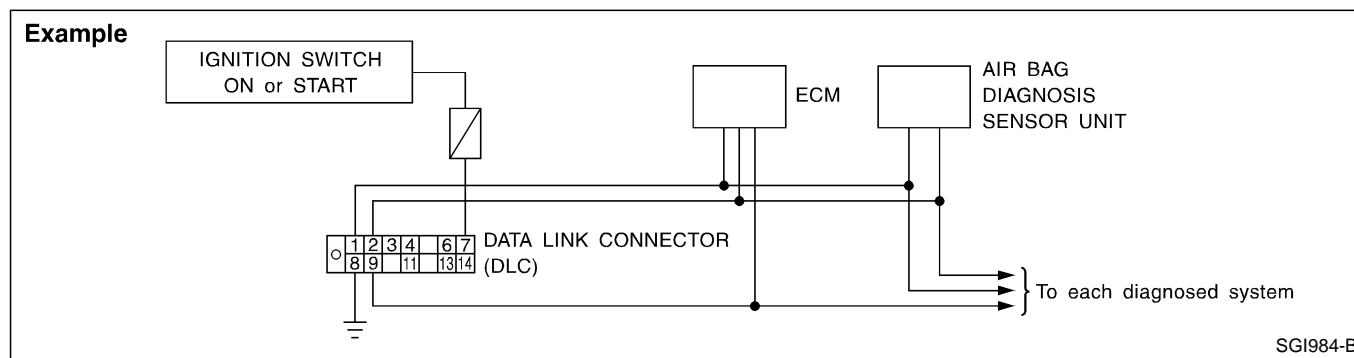
When ordering the below equipment, contact your NISSAN distributor.

Tool name	Description
<b>NISSAN CONSULT-II</b> ① CONSULT-II unit (Tester internal soft: Resident version 3.2.0) and accessories ② Program card AED01B-1 for diagnostic, AEN00A/00B for NATS. To confirm the best combination of those softwares, refer to CONSULT-II Operation Manual.	 <p style="text-align: center;">SGI083A</p>

### NOTE:

- The CONSULT-II must be used in conjunction with a program card. CONSULT-II does not require loading (Initialization) procedure.
- Be sure the CONSULT-II is turned off before installing or removing a program card.

## CONSULT-II Data Link Connector (DLC) Circuit



### INSPECTION PROCEDURE

If the CONSULT-II cannot diagnose the system properly, check the following items.

Symptom	Check item
CONSULT-II cannot access any system.	<ul style="list-style-type: none"> <li>• CONSULT-II DLC power supply circuit (Terminal 7) and ground circuit (Terminal 8) (For detailed circuit, refer to "MIL &amp; Data Link Connectors Wiring Diagram" in EC section.)</li> <li>• CONSULT-II DDL cable</li> </ul>
CONSULT-II cannot access individual system. (Other systems can be accessed.)	<ul style="list-style-type: none"> <li>• CONSULT-II program card (Check the appropriate CONSULT-II program card for the system. Refer to "Checking Equipment" above.)</li> <li>• Power supply and ground circuit for the control unite of the system (For detailed circuit, refer to wiring diagram for each system.)</li> <li>• Open or short circuit between the system and CONSULT-II DLC (For detailed circuit, refer to wiring diagram for each system.)</li> </ul>

# IDENTIFICATION INFORMATION

## Model Variation

### PICKUP (2WD)

Destination	Class		Grade	Model				Engine	Transmission	Differential carrier
	Wheelbase	Cab		LH drive	RH drive	Engine	Transmission			
General areas (Except for the Middle East, Australia and Europe)	Long	Single Cab	STD	ABGGLCFD22EWL	—	KA24DE	FS5W71C	C200		
				ABEGLCFD22SWL	ABEGRCFD22SWL	Z24S				
				—	ABGGRCFD22EWL	KA24DE				
				AVPGLCFD22NWL	AVPGRCFD22NWL	TD27				
				CBEGLCFD22SWL	CBEGRCFD22SWL	Z24S				
				CBGGLCFD22EWL	—	KA24DE				
		Double Cab	CVPGLCFD22NWL	CVPGRCFD22NWL	TD27	RE4R01A				
			CBGGLCAD22EWN	—	KA24DE	FS5W71C				
			CBGGLFFD22EWL	—	RE4R01A	FS5W71C				
			CBGGLFAD22EWN	—	FS5W71C	FS5R30A				
			CVPGLFFD22NWN	—	FS5W71C	FS5R30A				
			CVLGLFFD22UWG	CVLGRFFD22UWG	YD25DDTi	FS5W71C				
Australia	Long	Single Cab	DX	—	ABGGRDFD22EML	KA24DE	C200			
				—	ABGGRDBD22EML	RE4R01A				
				—	ALBGRDFD22EML	FS5R30A				
				—	ALBGRDAD22EML	RE4R01A				
				—	AVPGRDFD22NML	TD27				
				—	BVPGREFD22NML	FS5W71C				
		Double Cab	—	CBGGRDFD22EML	KA24DE	RE4R01A				
			—	CBGGRDBD22EML	FS5R30A	RE4R01A				
			—	CLBGRDFD22EML	VG30E	RE4R01A				
			—	CLBGRDAD22EML	TD27	FS5W71C				
			—	CVPGRDFD22NML	KA24DE	FS5R30A				
			—	CBGGRDFD22EML	VG30E	RE4R01A				
Europe	Long	Single Cab	STD	ABGGLCFD22EQL	—	KA24DE	C200*			
				AVLGLCFD22UQL	—	YD25DDTi				
				ABGGLDFD22EQL	—	KA24DE				
				AVLGLDFD22UQL	AVLGRDFD22UQL	YD25DDTi				
				BGGGLDFD22EQL	—	KA24DE				
				BVLGLDFD22UQL	BVLGRDFD22UQL	YD25DDTi				
		King Cab	—	CBGGRDFD22EML	KA24DE	FS5W71C				
			—	CLBGRDFD22EML	FS5R30A	RE4R01A				
			—	CLBGRDAD22EML	VG30E	RE4R01A				
			—	CVPGRDFD22NML	TD27	FS5W71C				
			—	CBGGRDFD22EML	KA24DE	FS5R30A				
			—	CLBGRDAD22EML	VG30E	RE4R01A				
4WD appearance	Long	4WD appearance	DX	ABGGLCFD22EQL	—	KA24DE	C200*			
				AVLGLCFD22UQL	—	YD25DDTi				
				ABGGLDFD22EQL	—	KA24DE				
				AVLGLDFD22UQL	AVLGRDFD22UQL	YD25DDTi				
				BGGGLDFD22EQL	—	KA24DE				
				BVLGLDFD22UQL	BVLGRDFD22UQL	YD25DDTi				
		Double Cab	—	CBGGRDFD22EML	KA24DE	FS5W71C				
			—	CLBGRDFD22EML	FS5R30A	RE4R01A				
			—	CLBGRDAD22EML	VG30E	RE4R01A				
			—	CVPGRDFD22NML	TD27	FS5W71C				
			—	CBGGRDFD22EML	KA24DE	FS5R30A				
			—	CLBGRDAD22EML	VG30E	RE4R01A				

\*: H233B is optional for Europe (Portugal).

**IDENTIFICATION INFORMATION**  
**Model Variation (Cont'd)**

**PICKUP (2WD)**

Destination	Class		Grade	Model		Engine	Transmission	Differential carrier
	Wheelbase	Cab		LH drive	RH drive			
Middle East	Single Cab	STD	DX	ABEGLCFD22SKL	—	Z24S	FS5W71C	C200
				ABEALDFD22SKL	—	TD27		
				AVPALDFD22NKL	—	KA24DE		
				ABGALDFD22EKL	—	Z24S		
				ABEALDFD22SKL	—	KA24DE		
				ABGALDFD22EKL	—	Z24S		
	Double Cab	DX	ST	CBEGLDFD22SKL	—	Z24S	FS5W71C	C200
				CVPGLDFD22NKL	—	TD27		
				CBGGLDFD22EKL	—	KA24DE		
				CBEGLEFD22SKL	—	Z24S		
				CBGGLFFD22EKN	—	KA24DE		
				CBGGLFAD22EKL	—	RE4R01A		
Double Cab	SE	SE	CBGGLFFD22EKL	—	KA24DE	FS5W71C	C200	
			CBGGLFFD22EKL	—	KA24DE			
			CBGGLFFD22EKL	—	KA24DE			
			CBGGLFAD22EKN	—	RE4R01A			
			CBGGLFAD22EKL	—	FS5W71C			
			CBGGLFAD22EKL	—	RE4R01A			

GI

MA

EM

LC

EC

FE

CL

MT

AT

TF

PD

FA

RA

BR

ST

RS

BT

HA

EL

IDX

# IDENTIFICATION INFORMATION

## Model Variation (Cont'd)

### PICKUP (4WD)

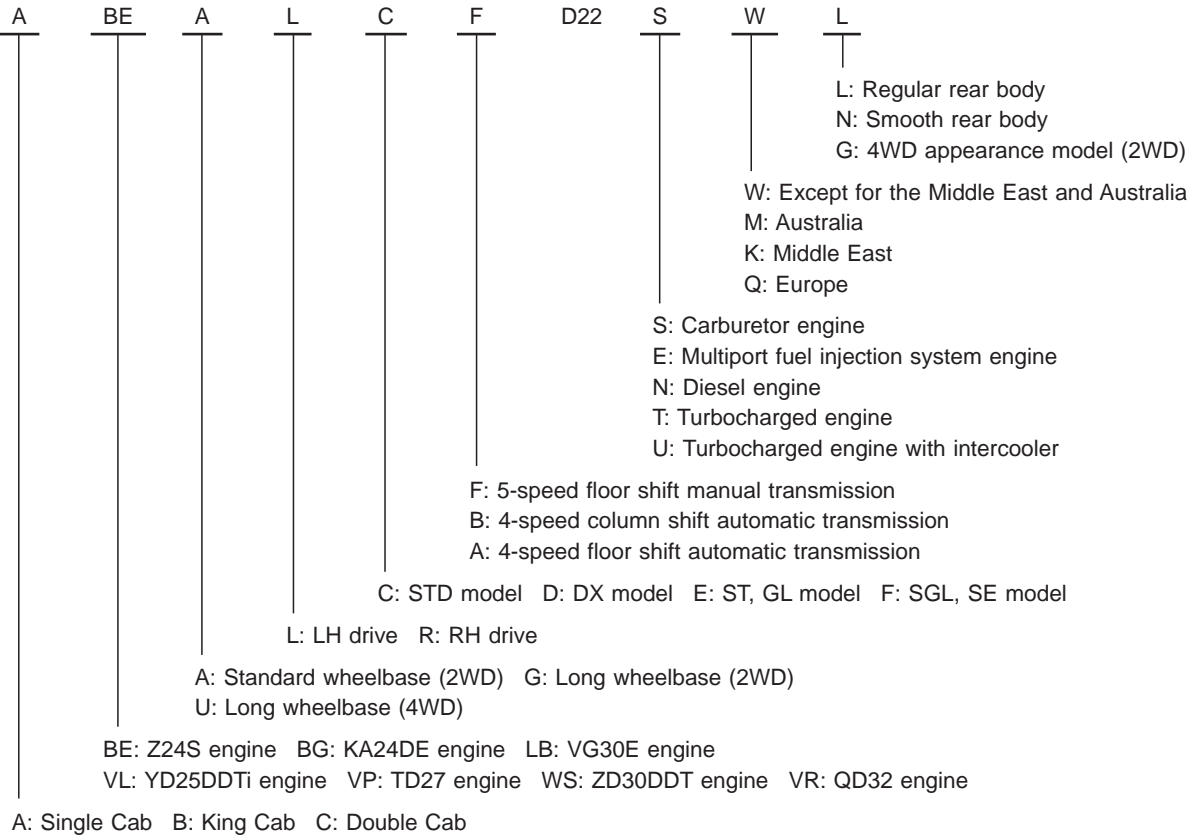
Destination	Class		Model				Engine	Transmission	Differential carrier		Transfer
	Wheelbase	Cab	Grade	LH drive	RH drive	Front			Rear		
General areas (Except for the Middle East and Europe)	Long	Single Cab	STD	ABGULCFD22EWL	ABGURCFD22EWL	KA24DE	FS5W71C	R180	C200	TX10	
				AWSULCFD22TWL	AWSURCFD22TWL		ZD30DDT				
				AVRULCFD22NWL	AVRURCFD22NWL		QD32				
		Double Cab	STD	CBGULCFD22EWN	CBGURCFD22EWN	KA24DE	FS5W71C				
				CWSULCFD22TWN	CWSURCFD22TWN		ZD30DDT				
				CVRULCFD22NWN	CVRURCFD22NWN		QD32				
	SE	SE	CBGULFFD22EWN	—	KA24DE	FS5W71C					
			CWSULFFD22TWN	CWSURFFD22TWN		ZD30DDT					
			CVRULFFD22NWN	CVRURFFD22NWN		QD32					
	Australia	Long	Single Cab	STD	—	AWSURCFD22TML	ZD30DDT	FS5R30A	R180	C200	TX10
					—	AWSURDFD22TML					
					—	BWSUREFD22TMN					
King Cab			DX	DX	—	CLBURDFD22EMN	VG30E	FS5R30A			
					—	CWSURDFD22TMN			ZD30DDT		
					—	CLBUREFD22EMN			VG30E		
Double Cab		ST	ST	—	CWSUREFD22TMN	ZD30DDT					
				—	AVLURCFD22UQL		YD25DDTi				
				—	AVLURDFD22UQL						
Europe		Long	Single Cab	STD	BBGULD22EQL	—		KA24DE	FS5W71C	R180	C200*
					BVLULDFD22UQN	BVLURDFD22UQN	YD25DDTi				
					BBGULEFD22EQL	—	KA24DE		FS5R30A		
	BVLULEFD22UQN		BVLUREFD22UQN	YD25DDTi							
	—		—	YD25DDTi	FS5W71C						
	DX		DX		CVLURDFD22UQN	CVLURDFD22UQN	FS5R30A				
	ST	ST	CBGULEFD22EQL		—	KA24DE	FS5W71C				
	—	—	CVLULEFD22UQN	CVLUREFD22UQN	YD25DDTi						
	—	—	—	—	YD25DDTi		FS5R30A				
	Middle East	Long	DX	ABGULDFD22EKL		—	KA24DE	FS5W71C	R180	C200	
				CBGULDFD22EKN		—		FS5R30A			
				—	—	FS5W71C					

\*: H233B is optional for Europe (Portugal).

# IDENTIFICATION INFORMATION

## Model Variation (Cont'd)

### Prefix and suffix designations (Pickup)



- GI
- MA
- EM
- LC
- EC
- FE
- CL
- MT
- AT
- TF
- PD
- FA
- RA
- BR
- ST
- RS
- BT
- HA
- EL
- IDX

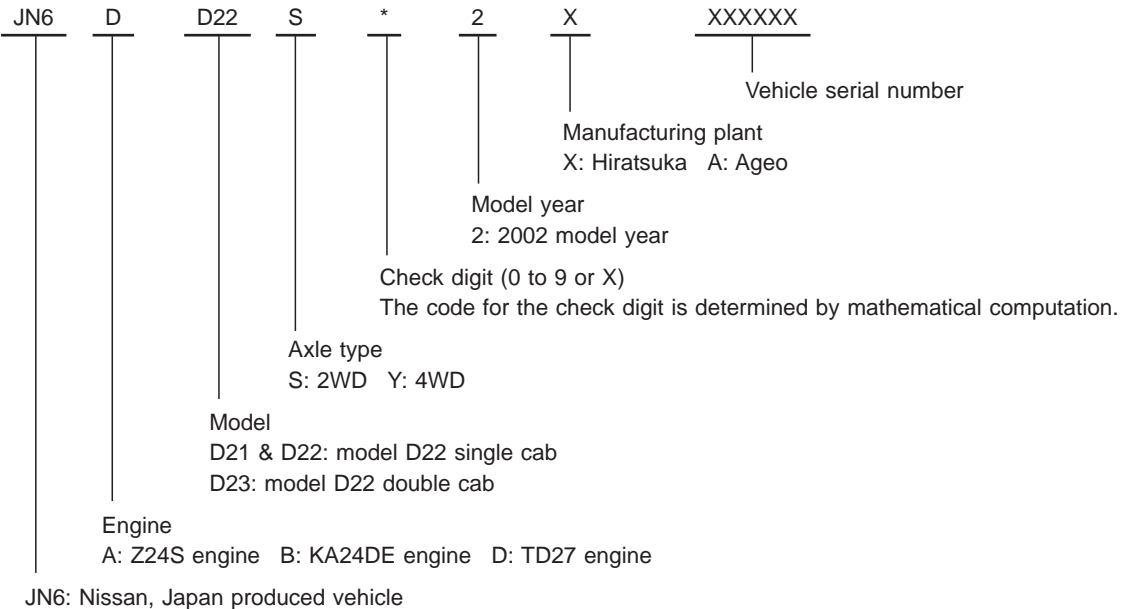
# IDENTIFICATION INFORMATION

## Identification Number

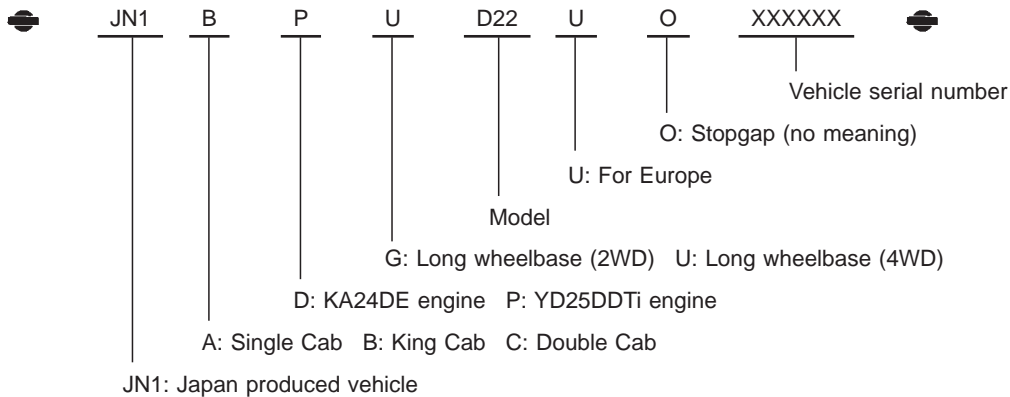
### VEHICLE IDENTIFICATION NUMBER

#### Prefix and suffix designations

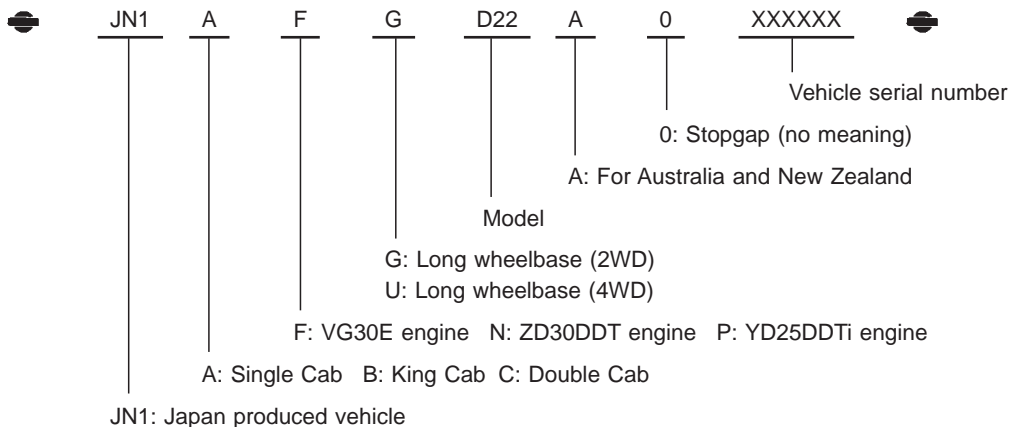
##### For the Middle East



##### For Europe



##### For Australia and New Zealand

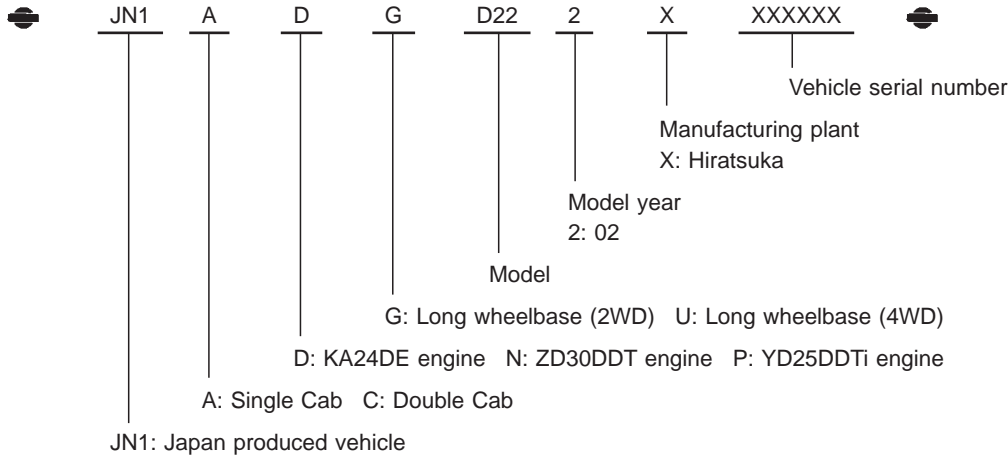




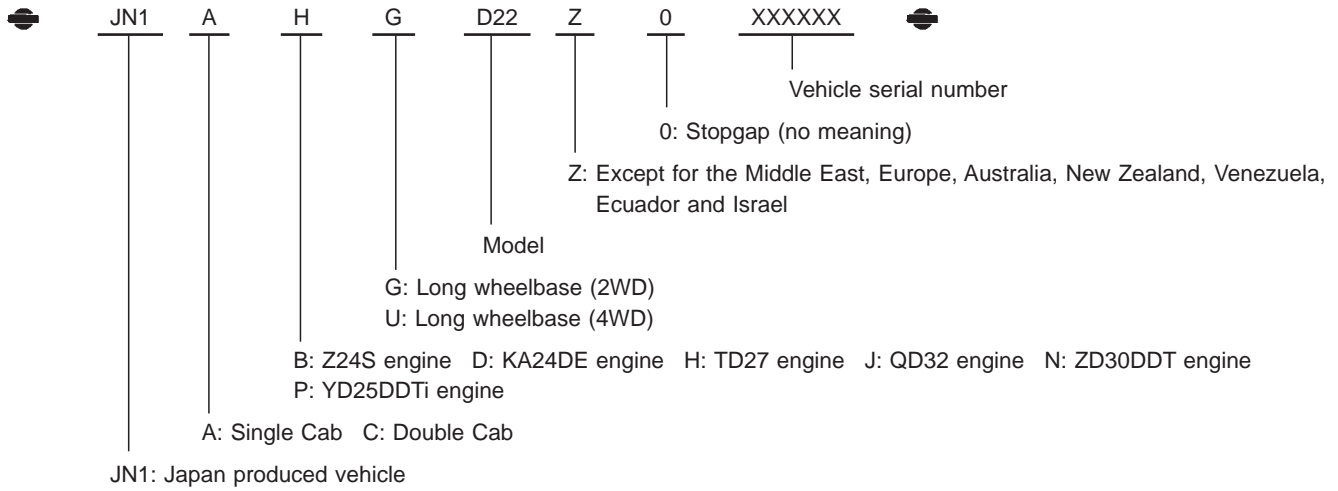
# IDENTIFICATION INFORMATION

## Identification Number (Cont'd)

### For Venezuela, Ecuador and Israel



### Except for the Middle East, Europe, Australia, New Zealand, Venezuela, Ecuador and Israel



GI

MA

EM

LC

EC

FE

CL

MT

AT

TF

PD

FA

RA

BR

ST

RS

BT

HA

EL

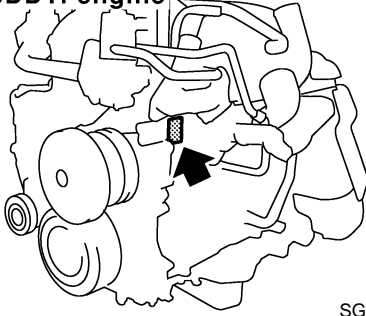
IDX

# IDENTIFICATION INFORMATION

## Identification Number (Cont'd)

### ENGINE SERIAL NUMBER

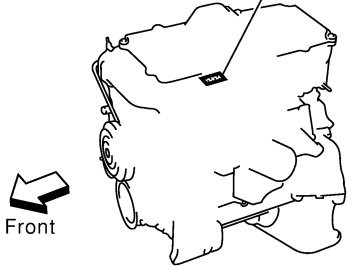
**YD25DDTi engine**



SGI182A

**ZD30DDT engine**

Stamped on the cylinder head



SGI137AB

# IDENTIFICATION INFORMATION

## Wheels and Tires

### PICKUP (2WD)

Tire	Wheel	2-wheel drive model							
		Except Australia, New Zealand and Europe		Australia and New Zealand			Europe		
		Single cab	Double cab	Single cab	King cab*3	Double cab	Single cab	King cab	Double cab
6.00/6.50-14-6/8PRLT*1	5J-14	X	X	—	—	—	—	—	—
6.50-14-8/8PRLT	5J-14	X	X	—	—	—	—	—	—
185R14C-8PR	5J-14	X	X	—	—	—	—	—	—
195R14-8PRLT	5J-14	—	—	X	X	X	—	—	—
195R14C-8PR	5J-14	X	X	—	—	—	X	X	X
195R15-8PRLT	5-1/2K-15	X	X	X*2	—	X*2	—	—	—
195R15C-8PR	5-1/2K-15	X	X	—	—	—	X	X	X
255/70R16	7JJ-16	—	X*3	—	—	—	—	X*3	X*3
265/70R16LT	7JJ-16	—	—	—	—	—	—	X*3	X*3

X: Applicable

—: Not applicable

\*1: 6.00-14-6 for front/6.50-14-8 for rear

6-ply rating for front/8-ply rating for rear

\*2: VG30E engine models

\*3: 4WD appearance models

### PICKUP (4WD)

Tire	Wheel	4-wheel drive model		
		Except Australia, New Zealand and Europe	Australia and New Zealand	Europe
6.50-15-6/8PRLT*1	5-1/2K-15	X	—	—
215R15-8PRLT	5-1/2K-15	X	—	—
215R15C-8PR	5-1/2K-15	X	—	—
205R16C-8PR	6J-16	X	X	X
255/70R16	7JJ-16	X	X	X
265/70R16LT	7JJ-16	—	—	X

X: Applicable

—: Not applicable

\*1: 6-ply rating for front/8-ply rating for rear

GI

MA

EM

LC

EC

FE

CL

MT

AT

TF

PD

FA

RA

BR

ST

RS

BT

HA

EL

IDX

# IDENTIFICATION INFORMATION

## Dimensions

Destination		Except Australia, New Zealand, Europe and the Middle East				
Item	Vehicle type	2-wheel drive model			4-wheel drive model	
	Wheelbase	Long			Long	
	Cab or bed type	Single cab	Double cab		Single cab	Double cab
				4WD appearance		
Overall length*1	mm (in)	5,010 (197.2) 5,170 (203.5)*1	4,920 (193.7) 4,945 (194.7)*2 5,080 (200.0)*1	4,945 (194.7) 5,080 (200.0)*1	5,010 (197.2) 5,170 (203.5)*1	4,945 (194.7) 5,080 (200.0)*1
Overall width	mm (in)	1,690 (66.5)	1,690 (66.5)	1,825 (71.9)	1,825 (71.9)	1,825 (71.9)
Overall height	mm (in)	1,625 (64.0) 1,610 (63.4)*4	1,635 (64.4) 1,620 (63.8)*4 1,630 (64.2)*4*2	1,710 (67.3)	1,690 (66.5) 1,700 (66.9)*3	1,700 (66.9)*2 1,705 (67.1) 1,715 (67.5)*3
Wheelbase	mm (in)	2,950 (116.1)	2,950 (116.1)	2,950 (116.1)	2,950 (116.1)	2,950 (116.1)
Tread	Front	mm (in)	1,395 (54.9)	1,395 (54.9)	1,525 (60.0)	1,525 (60.0)
	Rear	mm (in)	1,390 (54.7)	1,390 (54.7)	1,505 (59.3)	1,505 (59.3)
Ground clearance	mm (in)	195 (7.7) 175 (6.9)*4	195 (7.7) 190 (7.5) 175 (6.9)*4 180 (7.1)*4*2	220 (8.7)	205 (8.07) 215 (8.5)*3	205 (8.07) 215 (8.5)*3 195 (7.7)*2

\*1: On step bumper equipped models

\*2: AX and SE models

\*3: ZD30DDT engine models

\*4: KA24DE engine models

Destination		Australia and New Zealand					
Item	Vehicle type	2-wheel drive model			4-wheel drive model		
	Wheelbase	Long			Long		
	Cab or bed type	Single cab	King cab	Double cab	Single cab	King cab	Double cab
Overall length*1	mm (in)	5,010 (197.2)	5,035 (198.2)	4,920 (193.7) 5,080 (200.0)*1	5,010 (197.2)	5,035 (198.2)	4,945 (194.7) 5,080 (200.0)*1
Overall width	mm (in)	1,690 (66.5)	1,690 (66.5)	1,690 (66.5)	1,825 (71.9)	1,825 (71.9)	1,825 (71.9)
Overall height	mm (in)	1,615 (63.6) 1,620 (63.8)*2	1,615 (63.6)	1,625 (64.0) 1,635 (64.4)*2	1,695 (66.7)	1,695 (66.7)	1,715 (67.5)
Wheelbase	mm (in)	2,950 (116.1)	2,950 (116.1)	2,950 (116.1)	2,950 (116.1)	2,950 (116.1)	2,950 (116.1)
Tread	Front	mm (in)	1,395 (54.9)	1,395 (54.9)	1,395 (54.9)	1,525 (60.0)	1,525 (60.0)
	Rear	mm (in)	1,390 (54.7)	1,390 (54.7)	1,390 (54.7)	1,505 (59.3)	1,505 (59.3)
Ground clearance	mm (in)	180 (7.1) 190 (7.5)*2	180 (7.1)	180 (7.1) 190 (7.5)*2	215 (8.5)	215 (8.5)	220 (8.7)

\*1: On step bumper equipped models

\*2: VG30E engine models

# IDENTIFICATION INFORMATION

## Dimensions (Cont'd)

Destination		Europe					
Vehicle type		2-wheel drive model			4-wheel drive model		
Wheelbase		Long			Long		
Cab or bed type		Single cab	King cab	Double cab	Single cab	King cab	Double cab
Overall length*1	mm (in)	5,010 (197.2) 5,170 (203.5)*1	5,035 (198.2) 5,170 (203.5)*1	4,945 (194.7) 5,080 (200.0)*1	5,010 (197.2) 5,170 (203.5)*1	5,035 (198.2) 5,170 (203.5)*1	4,945 (194.7) 5,080 (200.0)*1
Overall width	mm (in)	1,690 (66.5)	1,690 (66.5) 1,825 (71.9)*2	1,690 (66.5) 1,825 (71.9)*2	1,825 (71.9)	1,825 (71.9)	1,825 (71.9)
Overall height	mm (in)	1,610 (63.4)	1,610 (63.4) 1,695 (66.7)*2	1,620 (63.8) 1,705 (67.1)*2	1,700 (66.9)	1,700 (66.9)*3	1,715 (67.5) 1,720 (67.7)*3
Wheelbase	mm (in)	2,950 (116.1)	2,950 (116.1)	2,950 (116.1)	2,950 (116.1)	2,950 (116.1)	2,950 (116.1)
Tread	Front	mm (in)	1,395 (54.9) 1,525 (60.0)*2	1,395 (54.9) 1,525 (60.0)*2	1,525 (60.0)	1,525 (60.0)	1,525 (60.0)
	Rear	mm (in)	1,390 (54.7) 1,505 (59.3)*2	1,390 (54.7) 1,505 (59.3)*2	1,505 (59.3)	1,505 (59.3)	1,505 (59.3)
Ground clearance	mm (in)	180 (7.1)	180 (7.1) 220 (8.7)*2	180 (7.1) 220 (8.7)*2	215 (8.5)	220 (8.7)	220 (8.7)

\*1: On step bumper equipped models

\*2: 4WD appearance models

\*3: With optional 255/70R16 tires

Destination		The Middle East				
Vehicle type		2-wheel drive model			4-wheel drive model	
Wheelbase		Standard	Long		Long	
Cab or bed type		Single cab	Single cab	Double cab	Single cab	Double cab
Overall length*1	mm (in)	4,885 (192.3)	5,130 (202.0)	5,095 (200.6) 4,895 (192.7)*2	5,185 (204.1)	5,095 (200.6)
Overall width	mm (in)	1,690 (66.5)	1,690 (66.5)	1,690 (66.5)	1,820 (71.7)	1,820 (71.7)
Overall height	mm (in)	1,615 (63.6)	1,610 (63.4)	1,620 (63.8)	1,680 (66.1)	1,710 (67.3)
Wheelbase	mm (in)	2,650 (104.3)	2,950 (116.1)	2,950 (116.1)	2,950 (116.1)	2,950 (116.1)
Tread	Front	mm (in)	1,395 (54.9)	1,395 (54.9) 1,415 (55.7)*2	1,525 (60.0)	1,525 (60.0)
	Rear	mm (in)	1,390 (54.7)	1,390 (54.7) 1,410 (55.5)*2	1,505 (59.3)	1,505 (59.3)
Ground clearance	mm (in)	190 (7.5)	180 (7.1)	190 (7.5)	195 (7.7)	200 (7.9)

\*1: On step bumper equipped models, the bumper adds 155 mm (6.1 in), and overrider adds 55 mm (2.2 in) to overall length above.

\*2: SKYSTAR model