

Engine & Cooling	Fuel	Ignition	Electrical	Running gear	Torque settings	Capacities	Notes & Illustrations
------------------	------	----------	------------	--------------	-----------------	------------	-----------------------



Automotive
Technical
DATA
BOOK

Click on one of the buttons above to view data for this car. To return to this screen and make another choice, click anywhere on the data screen.

MENU HELP

Engine and cooling system4x4 Wagon 3.0i CAT (D21)1990 to 1994

Type		VG30E SOHC
Capacity (cm³) / number of cylinders		2960 / 6
Compression ratio / pressure	bar	9.0 / ≥8.8
Oil pressure	bar	[3.6 to 4.5]
Oil temperature	°C	80
Valve clearance - inlet	mm	0: Hyd.
Valve clearance - exhaust	mm	0: Hyd.
Firing order		1-2-3-4-5-6
No 1 cylinder position		FR
Thermostat opening temperature	°C	76.5
Radiator cap pressure	bar	0.78 to 0.98

Fuel system4x4 Wagon 3.0i CAT (D21)1990 to 1994

Idle speed - manual [auto]	rpm	750±50
Fast idle speed - manual [auto]	rpm	—
CO @ idle speed [3000 rpm] - see page VI	%	0.2 to 8.0 N/A
HC @ idle speed [3000 rpm] - see page VI	ppm	≤200
CO2 @ idle speed [3000 rpm] - see page VI	%	—
O2 @ idle speed [3000 rpm] - see page VI	%	—
Carburettor / fuel injection		Nissan MPI ECCS
Type / ref.		
Main jet / needle		
Injection pressure	bar	2.4
Pump pressure	bar	2.99
Octane rating	RON	91[U]

Ignition system4x4 Wagon 3.0i CAT (D21)1990 to 1994

Type		Electronic
Ignition coil		—
Primary resistance	ohms	1.0
Ballast resistor	ohms	—
Voltage - Tmnl 15(+) to earth	V	12.0
Distributor		Mitsubishi
Points gap (air gap)	mm	[0.30 to 0.50]
Dwell angle	° (%)	—
Condenser capacity	µF	—
Rotation		—
Ignition timing - basic [static]	° Crankshaft @ rpm	15±2 BTDC @ 750±50
V = Vacuum NV = No Vacuum		V
Total ignition advance	° Crankshaft @ rpm	—
° Crankshaft @ rpm		—
° Crankshaft @ rpm		—
Centrifugal check.	° Crankshaft @ rpm	Computer control
° Crankshaft @ rpm		—
° Crankshaft @ rpm		—
Vacuum range check	mbar	Computer control
Maximum vacuum advance	° Crankshaft	—
Spark plugs		NGK
Type		BKR6EY
Electrode gap	mm	0.80 to 0.90

Electrical system4x4 Wagon 3.0i CAT (D21)1990 to 1994

Battery	V / CC / RC	12 / 210 / 70Ah
Alternator voltage / full load current / engine rpm		14.1 to 14.7 / 70 / 2500
Starter motor current / voltage - cranking	A / V	90 / 11.0
- locked	A / V	—

Running gear4x4 Wagon 3.0i CAT (D21)1990 to 1994

Brakes -		
Front (min. friction material thickness)	mm	2.0
Rear (min. friction material thickness)	mm	2.0
Tyres		
Saloon	Size	—
Estate / Van	Size	205x16: 215x15
Pressure - front / rear - Saloon	bar	—
- Estate / Van	bar	WSM
Front suspension / wheel alignment		
Toe-in (+) / Toe-out (-)	mm [°]	+4.0±1.0
Camber		+40'±30'
Castor		+11'18'±30'
King pin inclination		+8'6'±30'
Rear suspension / wheel alignment		
Toe-in (+) / Toe-out (-)	mm [°]	245 to 294
Camber		—

Torque wrench settings4x4 Wagon 3.0i CAT (D21)1990 to 1994

Cylinder head - stage 1	Nm	29
- stage 2	Nm	59
Cylinder head - stage 3	Nm	Loosen, then 29
- stage 4	Nm	+ 60 to 65°
Big-end bearings	Nm	15 + 60 to 65°
Main bearings	Nm	90 to 100
Clutch cover	Nm	22 to 29
Flywheel [driveplate]	Nm	83 to 93
Front hubs	Nm	WSM
Rear hubs	Nm	—
Wheel nuts / bolts	Nm	118 to 147
Spark plugs	Nm	20 to 29

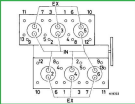
Capacities4x4 Wagon 3.0i CAT (D21)1990 to 1994

Engine oil & filter	litres	3.4
Gearbox - 4-speed [5-speed]	litres	3.6¹
Automatic transmission - refill	litres	8.5
Final drive	litres	Front: 1.5²
Cooling system	litres	10.9
Fuel tank	litres	80

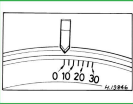
Notes and Illustrations

¹Transfer: 2.2
²Rear: 2.8

1: Idle speed 2: CO / Mixture



2960 cm³



2960 cm³



Nissan MPI ECCS